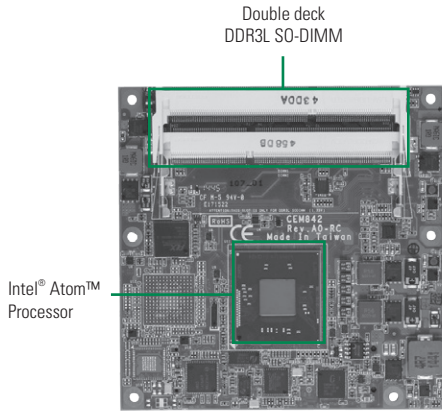


CEM843

Intel® Atom™ Processor E3845 COM Express Type 6 Compact Module



System

CPU	Intel® Atom™ processor E3845 1.91 GHz onboard
System Memory	2 x 204-pin SO-DIMM support DDR3L-1066/1333 up to 8 GB
Chipset	SoC integrated
BIOS	AMI uEFI
SSD	N/A
Watchdog Timer	255 levels, 1~255 sec. or min.
Expansion Interface	Max. up to 6 lanes of PCIe
Battery Lithium	N/A
Power Input	ATX: 12V/5VSB, AT: 12V
Size	95 x 95 mm
Board Thickness	2.0 mm
Temperature	-40°C ~ +85°C (-40°F ~ +185°F), operation
Operation Humidity	10% ~ 95% relative humidity, non-condensing

I/O

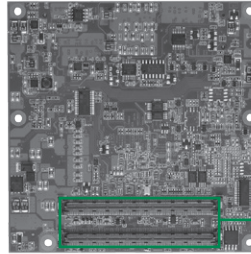
MIO	1 x LPC interface 1 x SPI interface
SATA	2 x SATA-300
Hardware Monitoring	Yes
Ethernet	1 port as 10/100/1000Mbps supports Wake-on-LAN, PXE Boot ROM with Intel® i210IT
Audio	HD link interface to baseboard for Codec
USB	8 x USB 2.0 and 1 x USB 3.0
TPM	ST33TPM12
SMBus	Yes
Digital I/O	4 channels IN & 4 channels OUT

Display

Chipset	Intel® HD graphics (Gen 7 Gfx) display engine Gfx APIs – DX11, OCL 1.2, OGL 3.0 2 independent displays
Display Interface	1 x VGA 1 x LVDS; 18/24-bit single/dual channel 1 x DDI (DP, HDMI, DVI)

Features

- Intel® Quad Core Atom™ processor E3845 (Bay Trail)
- 2 DDR3L-1066/1333 SO-DIMMs max. up to 8 GB
- Max. up to 6 lanes of PCIe
- 2 SATA-300 ports
- 8 USB 2.0 and 1 USB 3.0 ports



▲ Rear view

Packing List

Quick installation guide, user's manual/utility CD

Ordering Information

Standard

CEM843PVG-E3845 (P/N: E38D843100)	COM Express type 6 with Intel® Atom™ E3845 1.91GHz, DDI/VGA/LVDS, 10/100/1000Mbps Ethernet, USB 3.0 and TPM
--------------------------------------	---

Optional Accessories

CEB94006 (P/N: E394006100)	ATX form factor type 6 evaluation baseboard
5078D841100E	CEM841/2/3 Heatspreader
5078D842200E	CEM841/2/3 Heatsink without fan

SBC Services and Solutions

2

Systems on Modules

Embedded SBCs >EPIC

Embedded SBCs >3.5" Capa

Embedded SBCs >Nano-ITX

Embedded SBCs >Pico-ITX

Embedded SBCs >PC/104

Industrial Motherboards

Slot CPU Cards

ARM Embedded Boards

Accessories

Appendix

