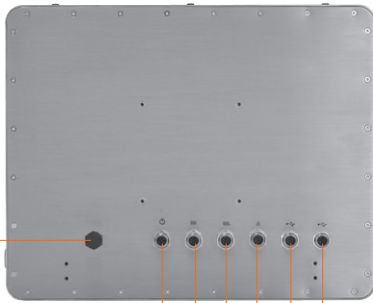
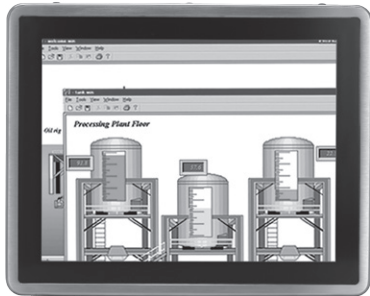


GOT815-834

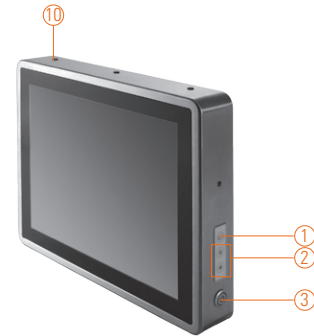
15" XGA TFT IP66-rated Stainless Steel Fanless PCT (or Resistive Touch) Panel Computer with Intel® Atom™ Processor E3827 and Flat Bezel Design (-20°C ~ +55°C)

NEW

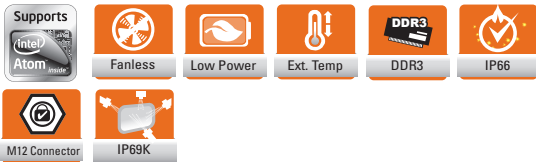


waterproof, dust proof ventilation valve

1. Backlight switch
2. Brightness adjust
3. Power switch (ATX)
4. DC power connector (A-coded)
5. COM 1 (RS-232/422/485) (A-coded)
6. COM 2 (RS-232/422/485) (A-coded)
7. Ethernet (X-coded)
8. USB 2.0 x 2 (A-coded)
9. USB 2.0 x 2 (A-coded)
10. Wi-Fi/3G antenna x 3 (optional, only for RF version)



▲ Side view



Introduction

The 15-inch GOT815 is specially designed for food processing applications. Its IP66-rating stainless steel housing protects entire system from damage of water, powder and dust. It also supports a wide operating temperature range of -20°C ~ +55°C. Thus, this robust unit is best suited for extreme humidity, dusty or wet spaces in food factories or kitchens and more harsh applications.

Full IP66 and IP69K compliance

The GOT815 adopts a water/dust-proof housing design with five IP66-rated connectors, M12 I/O connectors and IP69K compliance that ensures the product's ability to resist ingress of high temperature and high pressure water. It passed entire system IP66 test by SGS, and verified salt mist test. Additionally, it was tested by a spray nozzle with high temperature water (80°C), a flow rate of 14–16 L/min and a nozzle hold with distance 10–15cm away from the device at angles of 0°, 30°, 60° and 90° for 30 seconds. The GOT815 is qualified to meet harsh environment applications.

Wide temp. (-20°C ~ +55°C) & anti-vibration (2G) design

The GOT815 featuring fanless and noiseless design supports a wide operating temperature range from -20°C to +55°C. Besides, the patent of anti-vibration for SSD ensures system reliability and stability.

Features

- 15" XGA TFT LCD flat bezel-projected capacitive (or resistive) touch
- IP66/IP69K-rated (NEMA4X) water/dust/corrosion-proof design
- Full stainless steel enclosure with type 316
- Wide operating temperature range of -20°C ~ +55°C
- Fanless system with Intel® Atom™ processor E3827 1.75 GHz
- Wireless network connectivity
- Wide range 9~36 VDC power input
- Supports suspension and VESA mount
- M12 type I/O connectors for harsh environments

Specifications

Enclosure	Stainless type 316	
LCD Panel	Display Type	15" XGA TFT LCD
	Brightness (cd/m ²)	420 nits
	Resolution	1024 x 768
	Viewing Angle (H/V)	160°/160°
Main System	CPU	Intel® Atom™ processor E3827 1.75 GHz (Bay Trail)
	Chipset	SoC Integrated
System Memory	2 x 204-pin DDR3L-1333 SO-DIMM dual channel max. up to 8 GB	
BIOS	AMI with Axiomtek standard features; such as, SmartView, Ethernet Boot ROM (RPL & PXE), customer CMOS backup	
Storage	1 x 2.5" SSD	
	1 x CFast™	
Watchdog Timer	255 levels, 1~255 sec.	
Onboard Graphics	Integrated in Intel® GFX	



Specifications

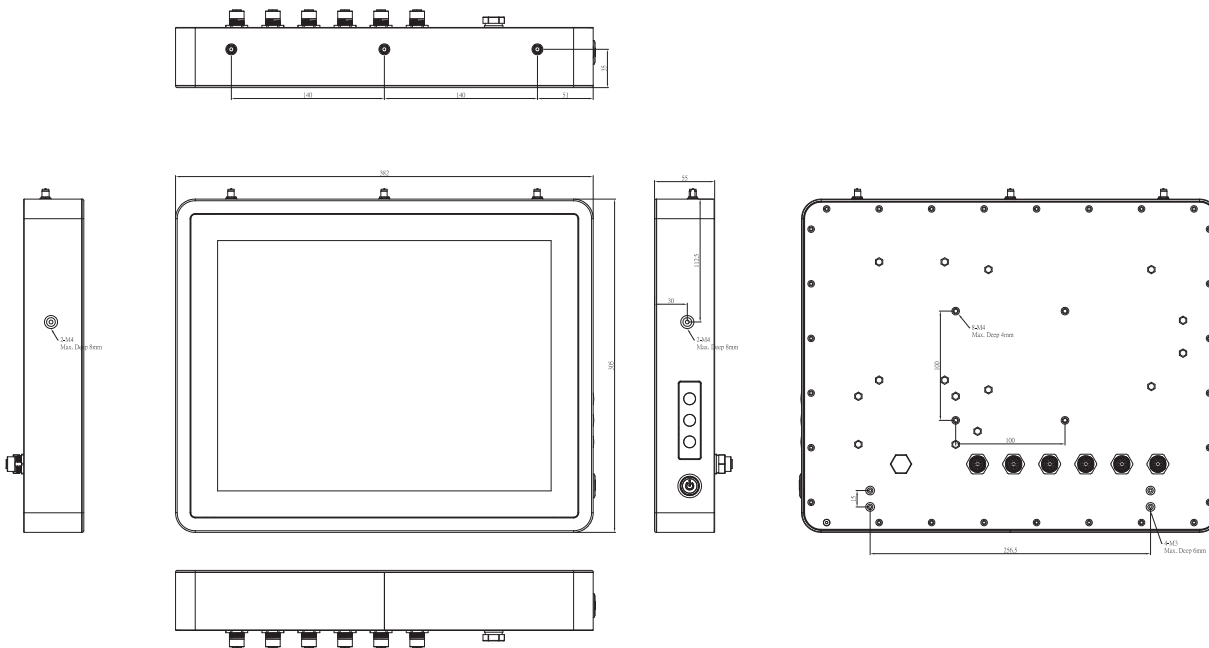
I/O Connector	2 x RS-232/422/485 (default RS-232, A-Coded) 4 x USB 2.0 (A-Coded) 1 x 10/100/1000 Mbps Ethernet (X-Coded)
Expansion Interface	2 x PCI Express Mini Card slot
Touchscreen	5-wire resistive touch or projected capacitive multi-touch
Power Supply	Power input 9-36VDC
Power Consumption	30W
Dimensions	382 mm (15.4") (W) x 55 mm (2.17") (D) x 305 mm (12.01") (H)
Packing Dimensions	510 mm (20.07") (W) x 186 mm (7.32") (D) x 532 mm (20.94") (H)
Weight (net/gross)	5.2kg (11.46lb)/ 8.4kg (18.51lb)
Environment	Operating temperature: -20°C ~ +55°C (-4°F ~ +131°F) Storage Temperature: -30°C ~ +70°C (-22°F ~ +158°F) Relative humidity: 10% ~ 95% @ 40°C, non-condensing Operation vibration: 2G, 5 ~ 500Hz, random for 2.5" SSD 2G, 5 ~ 500Hz, random for CompactFlash™
Certificate	CE

* W.T.: Wide Temperature. All W.T. supported products have to be sorted by Axiomtek.

Optional Accessories

594B8122100E	Water-proof COM port cable (1.8 m)
594B8122820E	Water-proof USB cable (1.8 m)
594B8152710E	Water-proof LAN cable (1.8 m)
50964A23000E	72W/24V power adapter with M12 connector

Dimensions



Ordering Information

Sunlight readable type	
GOT815-834-C-DC	15" XGA fanless IP66-rated stainless steel touch panel computer with Intel® Atom™ E3827, projected capacitive touch screen, 9-36VDC power input and flat bezel design
GOT815-834-C-RF-DC	15" XGA fanless IP66-rated stainless steel touch panel computer with Intel® Atom™ E3827, projected capacitive touch screen, 9-36VDC power input and flat bezel design and Wi-Fi or 3G
GOT815-834-R-DC	15" XGA fanless IP66-rated stainless steel touch panel computer with Intel® Atom™ E3827, 5-wire flat resistive touch screen, 9-36VDC power input and flat bezel design
GOT815-834-R-RF-DC	15" XGA fanless IP66-rated stainless steel touch panel computer with Intel® Atom™ E3827, 5-wire flat resistive touch screen, 9-36VDC power input, flat-bezel design and Wi-Fi or 3G

* Specification and certifications are based on requirements and may vary.

Optional EOS Installation

WES 7
WEBS

Optional OS Installation

Windows® 7
Windows® 8/8.1

Overview

Fanless Touch Panel Computers

2

Heavy-duty Fanless Touch Panel Computers

Industrial Touch Panel Computers

Industrial Touch panel Monitors

Infotainment Touch Panel Computers

Healthcare & Medical Solutions

Open Frame Panel Computers

Accessories

