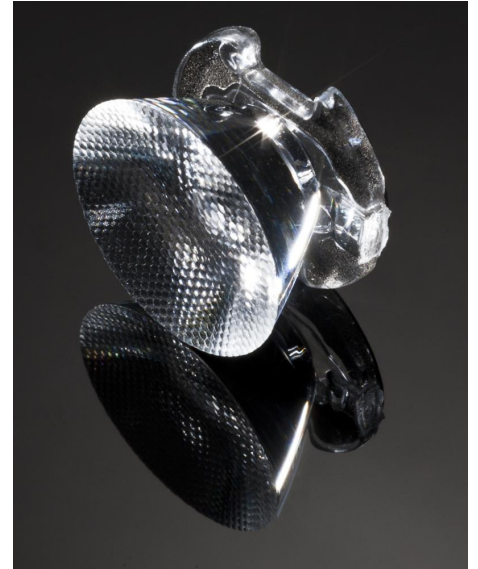


DETAILS

Product Number	CA11387_EMILY-SS
Family	Emily
Type	Assembly
Color	clear
Diameter	26 mm
Height	15,15 mm
Style	round
Optic Material	PMMA
Holder Material	
Fastening	pin, tape
Status	production ready
ROHS Compliant	Yes
Date Updated	9/06/2016



OPTICAL PROPERTIES

LED	Viewing	Light	Effi-	cd/lm	Connector
	Angle	Beam	ciency		
XP-G	11 deg	Smooth spo...	93 %	15.500	-
XP-E	10 deg	Smooth spo...	93 %	17.700	-
LUXEON Rebel	10 deg	Smooth spo...	93 %	15.900	-
NVSxx19A	13 deg	Smooth spo...	91 %	11.450	-
NCSxx19A	11 deg	Smooth spo...	91 %	-	-
NCSxx19B	12 deg	Smooth spo...	87 %	15.300	-
Oslon SSL 80	11 deg	Smooth spo...	88 %	6.670	-
Oslon SSL 150	12 deg	Smooth spo...	-	-	-
Z5	10 deg	Smooth spo...	-	-	-
Double Dome (GM2BB)	10 deg	Smooth spo...	94 %	-	-

D

C

B

A

4

4

Bottom view

Beam direction Emily-0-90

Beam direction Emily-0

8.6

∅26

3

3

Front view

15
-0.15mm without tape

0.7
+0.15mm without tape

Tape 0.4mm

2

2

Top view

∅26

Materials:
Lens PMMA
Tape PU Foam with adhesive

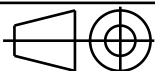
Part no.s:
CA11387_Emily-SS
CA11388_Emily-M
CA11389_Emily-0
CA11390_Emily-0-90
CA11391_Emily-M2

Tolerances if not otherwise shown
According to DIN ISO 2768-1
Linear measures:
up to 30mm class M, otherwise class C
According to DIN ISO 2768-2
Form and position: class L

LEDiL

Ledil Oy
Salorankatu 10
FIN 24240 SALO
Finland

THIRD ANGLE PROJECTION:



DRAWING TITLE

Datasheet Emily series lens

This drawing is the property of LEDiL Oy. It may not be reproduced, copied or communicated without a written agreement with LEDiL Oy.

SIZE

PART NUMBER

A4

SCALE

2:1 WEIGHT

SHEET

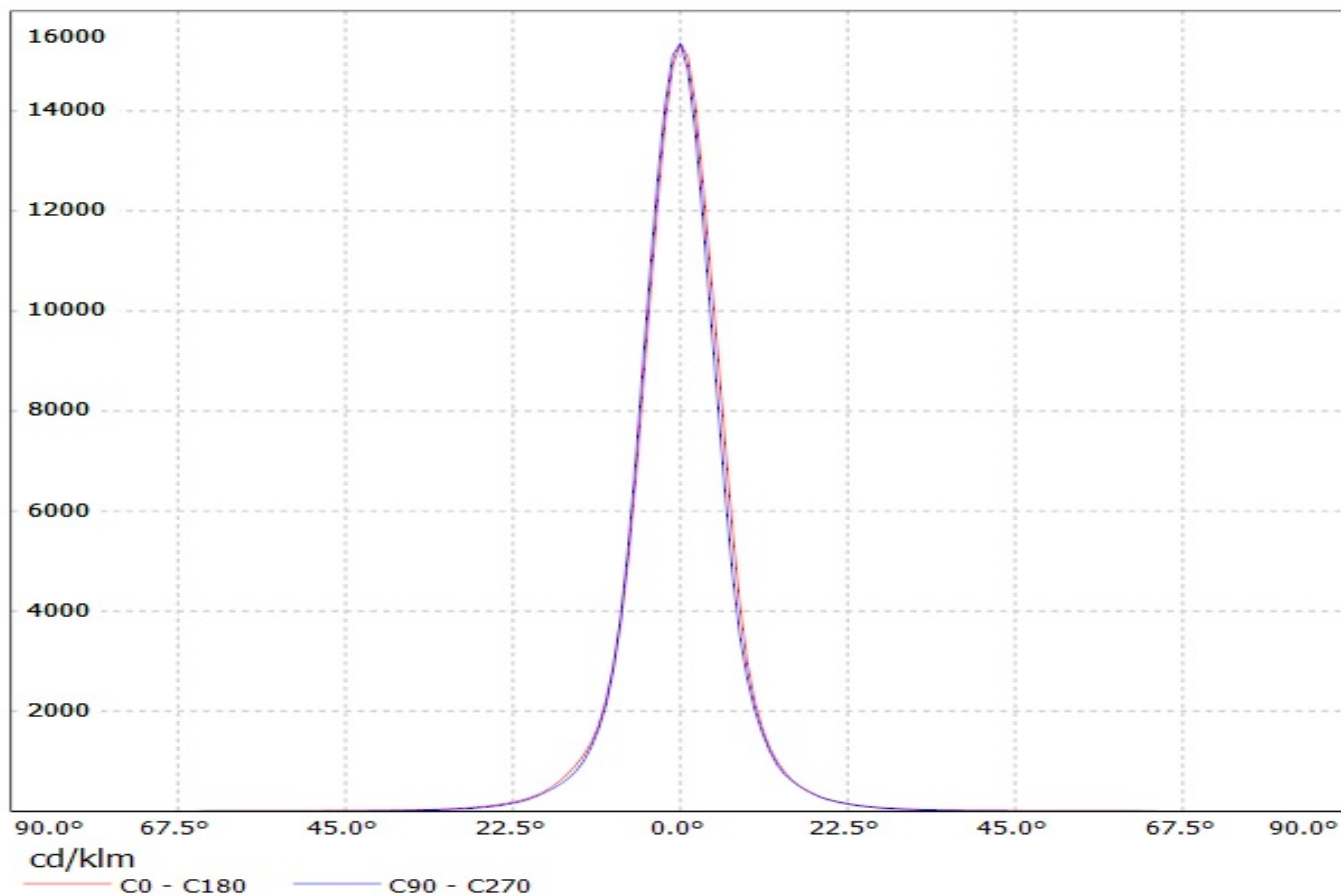
1/1

D

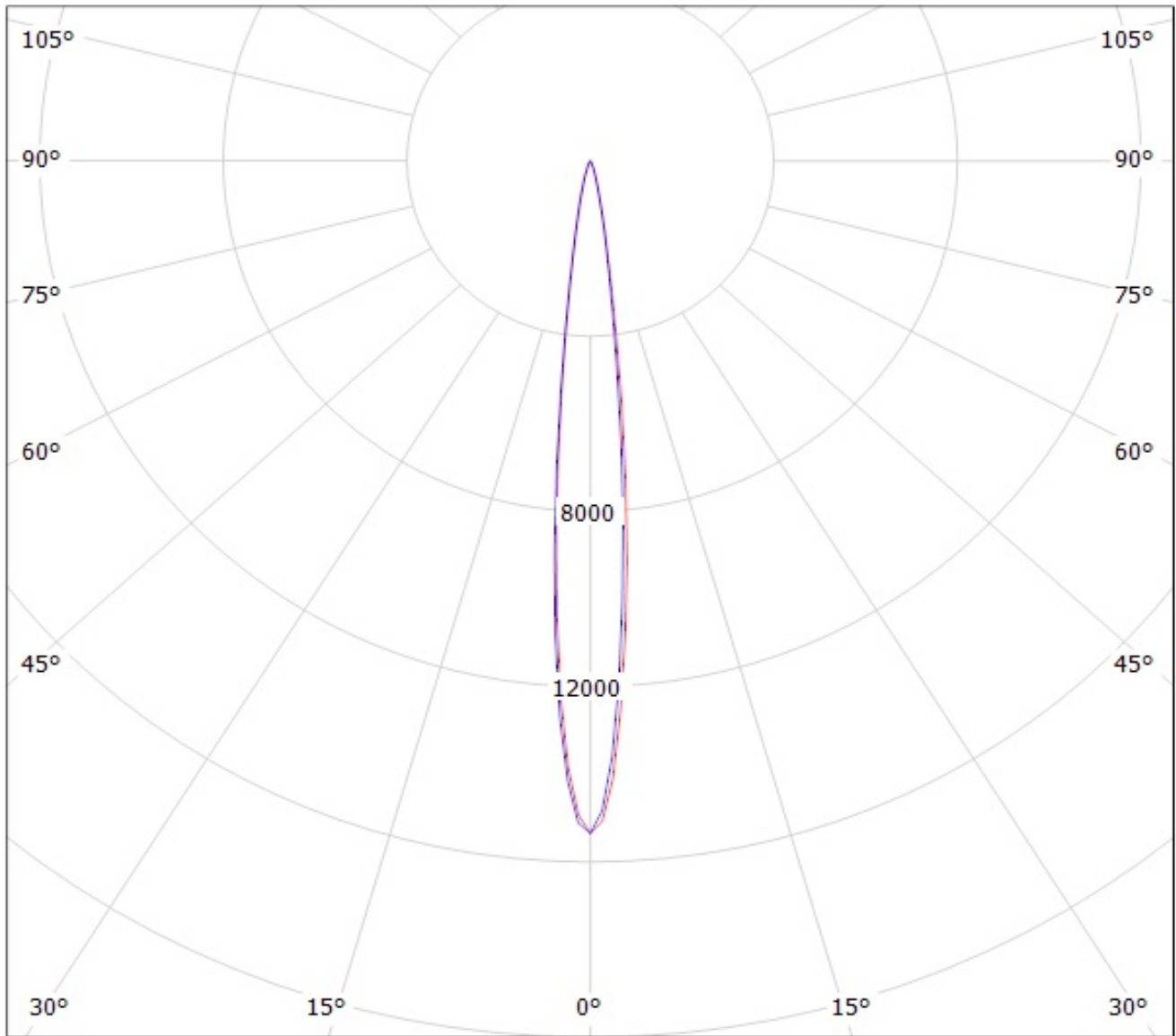
A

1

Luminaire: Ledil Oy CA11387_EMILY-SS_(NCSxx19B) Efficiency=87%
Lamps: 1 x Nichia NCSxx19B (NCSL119BE) 89.7lm @ 250mA CCT=3000K P=0.8W I=250mA



Luminaire: Ledil Oy CA11387_EMILY-SS_(NCSxx19B) Efficiency=87%
Lamps: 1 x Nichia NCSxx19B (NCSL119BE) 89.7lm @ 250mA CCT=3000K P=0.8W I=250mA



cd/klm

— C0 - C180 — C90 - C270

NOTE: The typical divergence will be changed by different color, chip size and chip position tolerance. The typical total divergence is the full angle measured where the luminous intensity is half of the peak value.