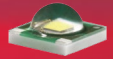


Data Sheet

LL03CR-AZxxL06



Xlamp XP-E



■ Features & Typical Applications

- High efficiency
- Available in 3 beam Patterns
- Optimized for uniform effects
- Lens without Housing
- Spot Lighting
- Architectural Lighting

■ Table of Contents

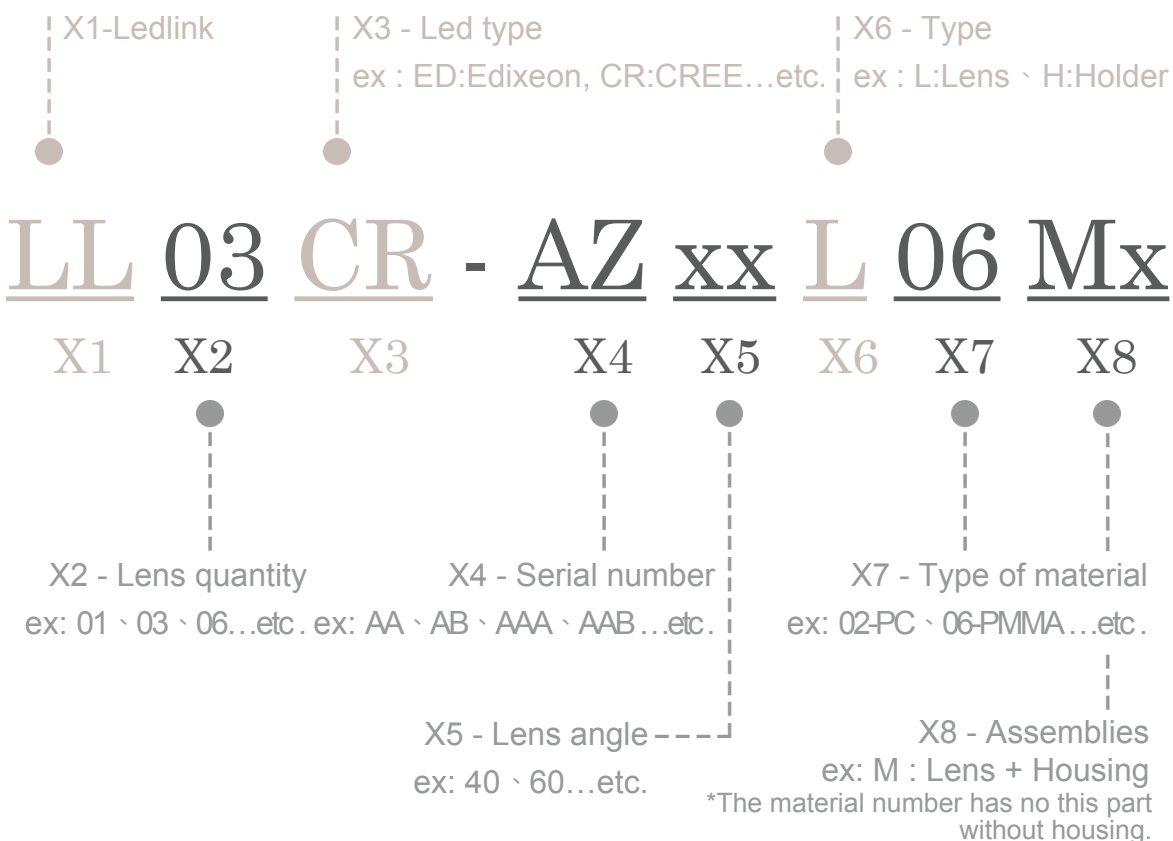
General Information & Product Nomenclature.....	P.2
Optical Specifications	P.3
Mechanical Specifications	P.4
Package Specifications	P.5

LL03CR-AZxxL06

General Information

- Lens Material Optical Grade PMMA
- Operating Temperature range -40°C~+70°C(upper limit +80°C)
- Storage Temperature range -40°C~+70°C(upper limit +80°C)
 - * Average transmittance in visible spectrum 400nm~700nm>90%
- Usage and Maintenance:
 1. If necessary, clean lenses with mild soap, water and soft cloth.
 2. Never use any commercial cleaning solvents on lenses, like alcohol.
 3. Please handle or install lenses with wearing gloves, skin oils may damage lens or its optical characteristic.

Product Nomenclature




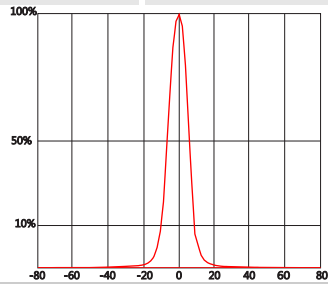
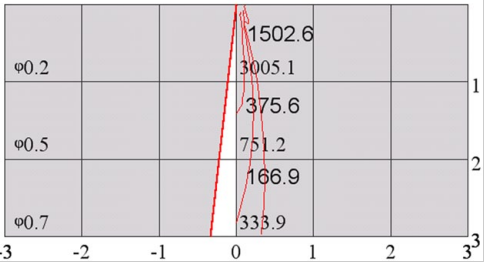
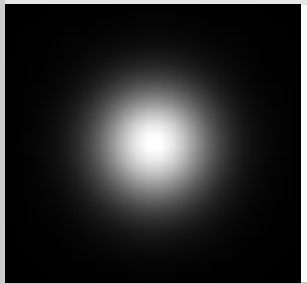
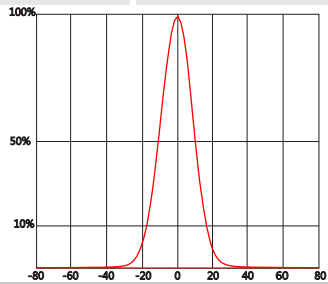
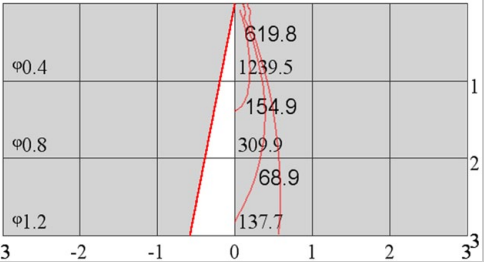
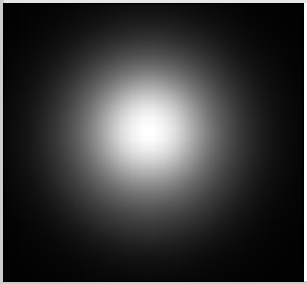
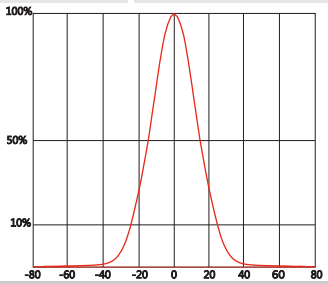
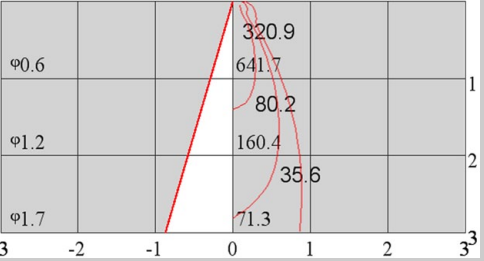
LL03CR-AZxxL06

Optical Specifications



Xlamp XP-E

Note: (1) All the results of analysis are based on 0 degrees of elevation.
 (2) Tolerance: $\pm 10\%$.
 (3) Led Luminous Flux(lm): 100($\pm 5\%$).

Part Number	FWHM	Field Angle*	cd / lm	IES File
LL03CR-AZ25L06	14°	25°	10.0	Download
				
Beam Pattern	Light Distribution Curve	Illuminance Distribution		
LL03CR-AZ45L06	24°	44°	4.1	Download
				
Beam Pattern	Light Distribution Curve	Illuminance Distribution		
LL03CR-AZ60L06	33°	62°	2.1	Download
				
Beam Pattern	Light Distribution Curve	Illuminance Distribution		

*The Field Angle is the angle between the two directions opposed to each other over the beam axis for which the luminous intensity is 10% that of the maximum luminous intensity.
 *This testing result is obtained through testing the popular rank LED samples which provided by the original manufacturer. Hence, the testing results would be varied as the users choose same LED model but different rank.

LL03CR-AZxxL06

Mechanical Specification

1. Fixing method

 Glue

 Screw

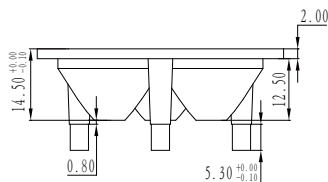
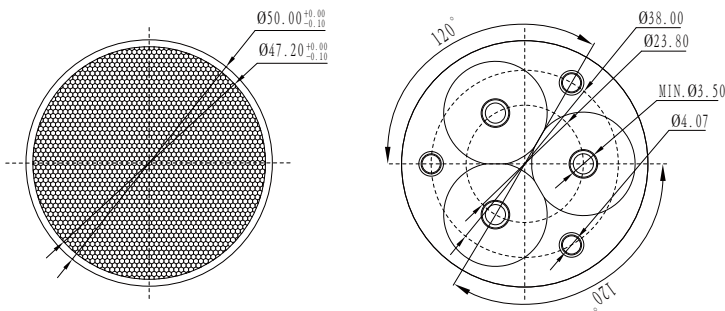
 Tape

 Fixing-ring

 Frame

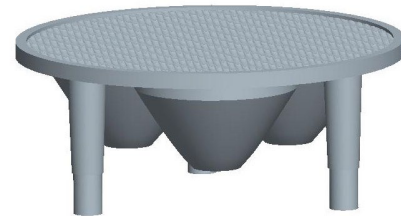
Note: (1) All dimensions are in mm.
 (2) All measurements are ± 0.15 mm unless otherwise indicated.

2. Lens dimensions

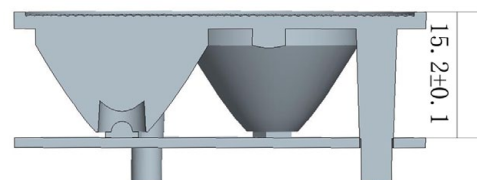


4. Lens assembly dimensions

3. Lens + Leds + MCPCB assembly instruction



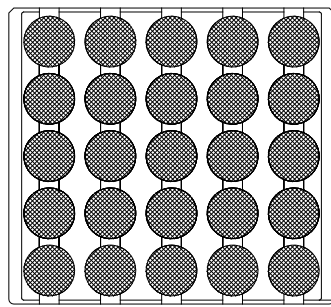
5. View assembly lens with MCPCB:



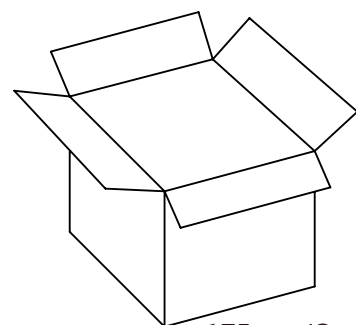
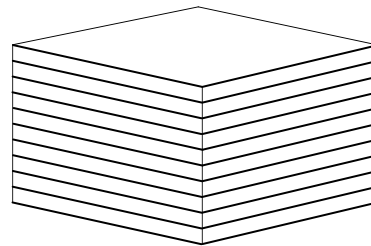
LL03CR-AZxxL06

Package Specifications

Item	Quantity	Total	Size(L*W*H)	G.W
Inner box		25 pcs	33*30*2.3cm	10g
Outer box	175 pcs/Outer box	175 pcs	35*31*21 cm	
Outer box				



25 pcs/Inner box



175 pcs/Outer box



Note: