

**Product number CA10325\_ROCKET-O**

|                 |                  |             |              |
|-----------------|------------------|-------------|--------------|
| Family          | Rocket-(sputnik) | FWHM        | 6+40 degrees |
| Type            | Assembly         | Efficiency  | 86 %         |
| LED             | XR-E             | cd/lm       | -            |
| Color           | Clear            | Gerber File | Available    |
| Diameter        | 26 mm            |             |              |
| Height          | 15.1 mm          |             |              |
| Style           | Round            |             |              |
| Optic Material  | PMMA             |             |              |
| Holder Material | -                |             |              |
| Fastening       | ["tape"]         |             |              |
| Status          | Production ready |             |              |

**Product number CA10324\_ROCKET-SS**

|                 |                  |             |           |
|-----------------|------------------|-------------|-----------|
| Family          | Rocket-(sputnik) | FWHM        | 8 degrees |
| Type            | Assembly         | Efficiency  | 89 %      |
| LED             | XR-E             | cd/lm       | -         |
| Color           | Clear            | Gerber File | Available |
| Diameter        | 26 mm            |             |           |
| Height          | 15.1 mm          |             |           |
| Style           | Round            |             |           |
| Optic Material  | PMMA             |             |           |
| Holder Material | -                |             |           |
| Fastening       | ["tape"]         |             |           |
| Status          | Production ready |             |           |

**Product number CA10541\_ROCKET-SS-C**

|                 |                  |             |            |
|-----------------|------------------|-------------|------------|
| Family          | Rocket-(sputnik) | FWHM        | 10 degrees |
| Type            | Assembly         | Efficiency  | -          |
| LED             | XR-E             | cd/lm       | -          |
| Color           | Metal            | Gerber File | Available  |
| Diameter        | 26 mm            |             |            |
| Height          | 15.1 mm          |             |            |
| Style           | Round            |             |            |
| Optic Material  | PMMA             |             |            |
| Holder Material | -                |             |            |
| Fastening       | ["tape"]         |             |            |
| Status          | Production ready |             |            |

**Product number CA10250\_ROCKET-M**

|                 |                  |             |            |
|-----------------|------------------|-------------|------------|
| Family          | Rocket-(sputnik) | FWHM        | 26 degrees |
| Type            | Assembly         | Efficiency  | 87 %       |
| LED             | XR-E             | cd/lm       | -          |
| Color           | Clear            | Gerber File | Available  |
| Diameter        | 26 mm            |             |            |
| Height          | 15.1 mm          |             |            |
| Style           | Round            |             |            |
| Optic Material  | PMMA             |             |            |
| Holder Material | -                |             |            |
| Fastening       | ["tape"]         |             |            |
| Status          | Production ready |             |            |



**PRODUCT DATASHEET**  
**Rocket-(sputnik) series**  
last update 26/6/2013

**NOTE: The typical divergence will be changed by different color, chip size and chip position tolerance. The typical total divergence is the full angle measured where the luminous intensity is half of the peak value.**



## PRODUCT DATASHEET Rocket-(sputnik) series

last update 26/6/2013

### GENERAL INFORMATION

- Product series especially designed & optimized for XR-E series of LEDs.
- Special care taken to make light distribution as uniform as possible.
- Lens material optical grade PMMA with high UV and temperature resistance. Allows use of high current and temperature conditions.

Please find more information about used material from below:

[http://ledil.fi/sites/default/files/Documents/Technical/Material/PMMA%20N%20UL94\\_Yellow%20Card.pdf](http://ledil.fi/sites/default/files/Documents/Technical/Material/PMMA%20N%20UL94_Yellow%20Card.pdf)

<http://ledil.fi/sites/default/files/Documents/Technical/Material/PMMA%20N%20PLEXIGLAS-Datasheet.pdf>

D

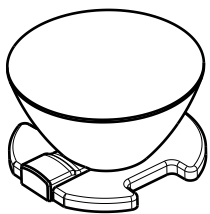
C

B

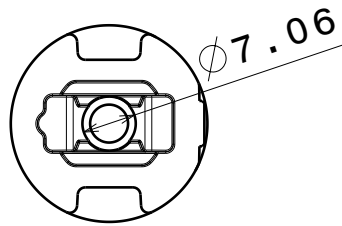
A

4

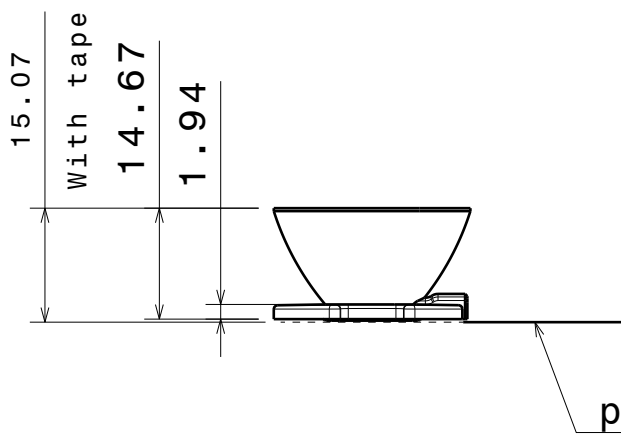
4



Isometric view



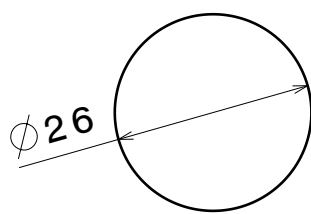
Bottom view



Front view

3

3



Top view

2

2

Material:  
 lens PMMA  
 tape PU foam

This drawing is our property.  
 It can't be reproduced  
 or communicated without  
 our written agreement.



L  
T  
F  
F

e  
e  
i  
i  
N  
n

d

h

DRAWING TITLE

Datasheet Rocket Lens

1

1

DRAWN BY  
p

DATE  
16.02.2009

CHECKED BY  
T K

DATE  
18.03.2008

SIZE  
A4

DRAWING NUMBER

REV  
0.2

DESIGNED BY  
HH

DATE  
18.03.2008

SCALE 1:1

WEIGHT (g)

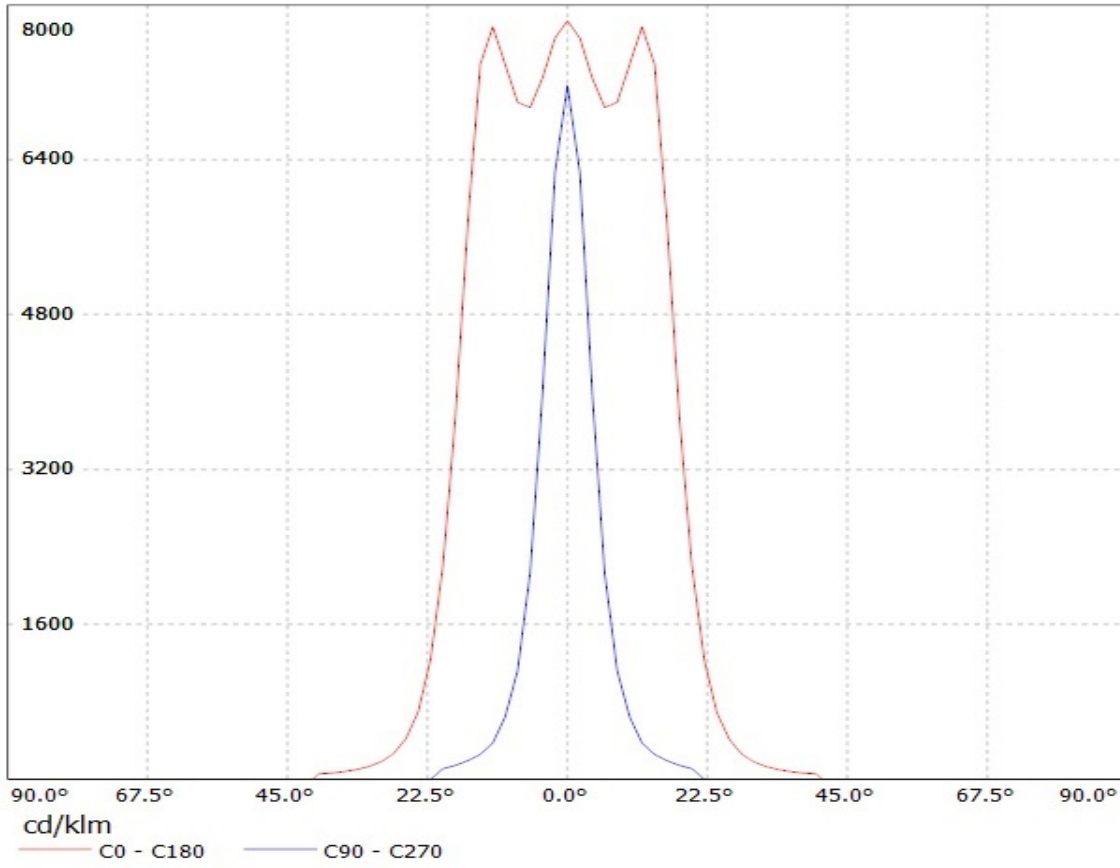
SHEET 1/1

D

A

Ledil Oy 10325\_Rocket-O 10325\_Rocket-O / LDC (Linear)

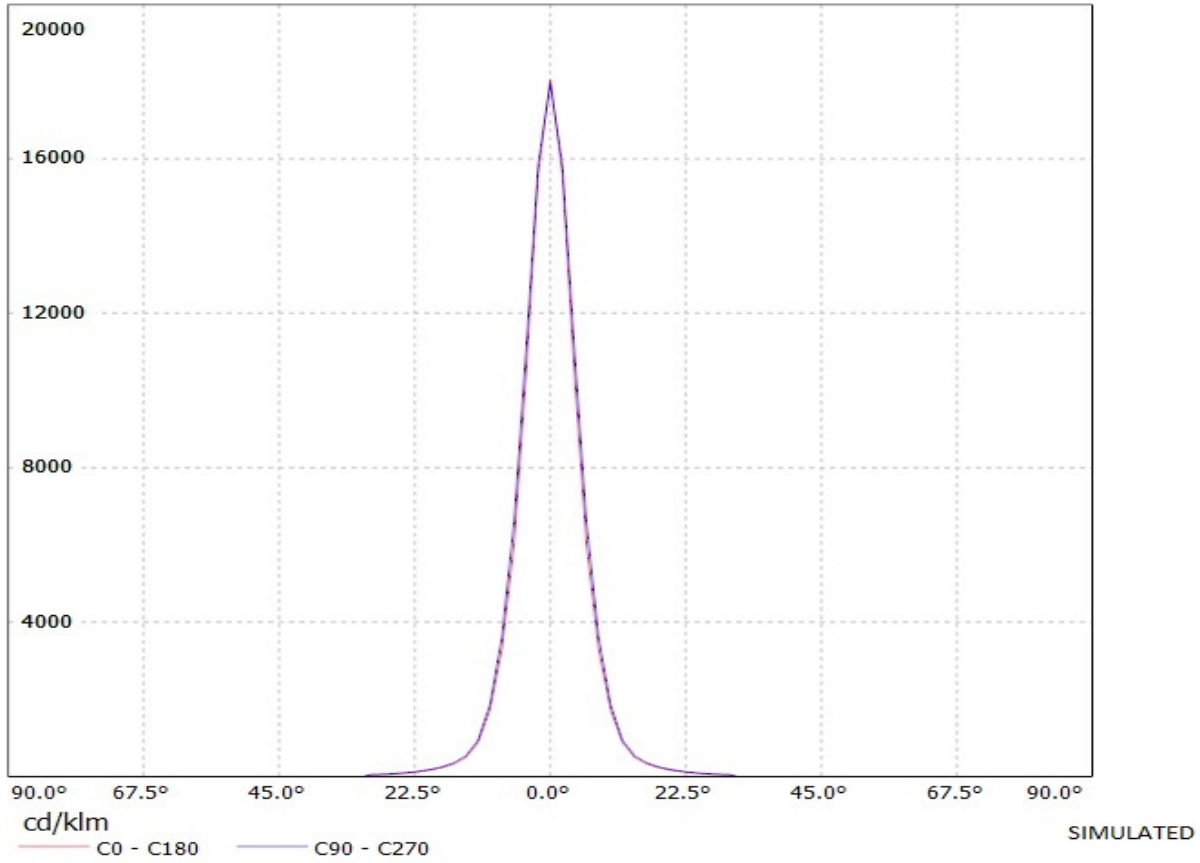
Luminaire: Ledil Oy 10325\_Rocket-O 10325\_Rocket-O  
Lamps: 1 x Cree XR-E (white)



SIMULATED

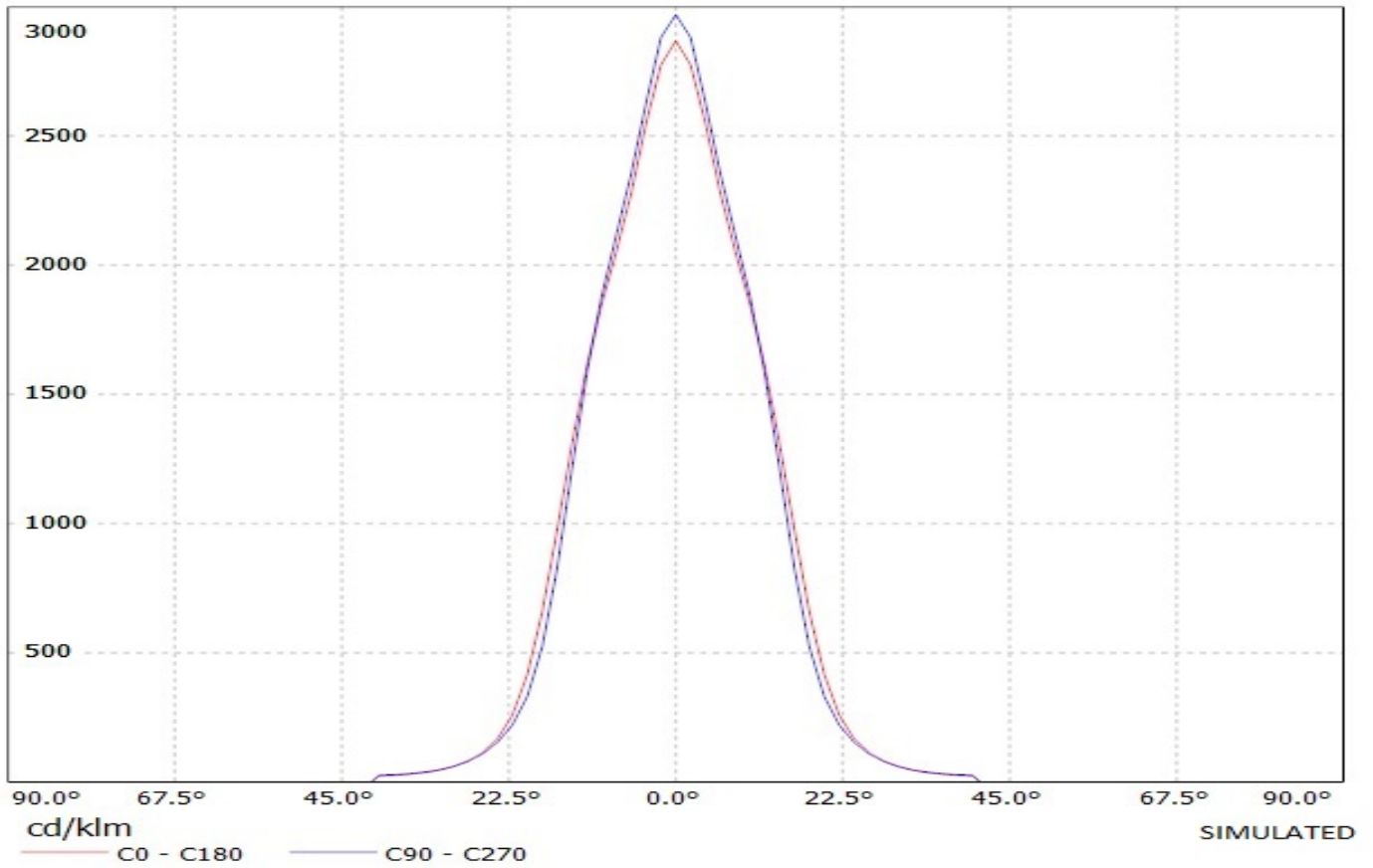
Ledil Oy 10324\_Rocket-SS 10324\_Rocket-SS / LDC (Linear)

Luminaire: Ledil Oy 10324\_Rocket-SS 10324\_Rocket-SS  
Lamps: 1 x Cree XR-E (white)



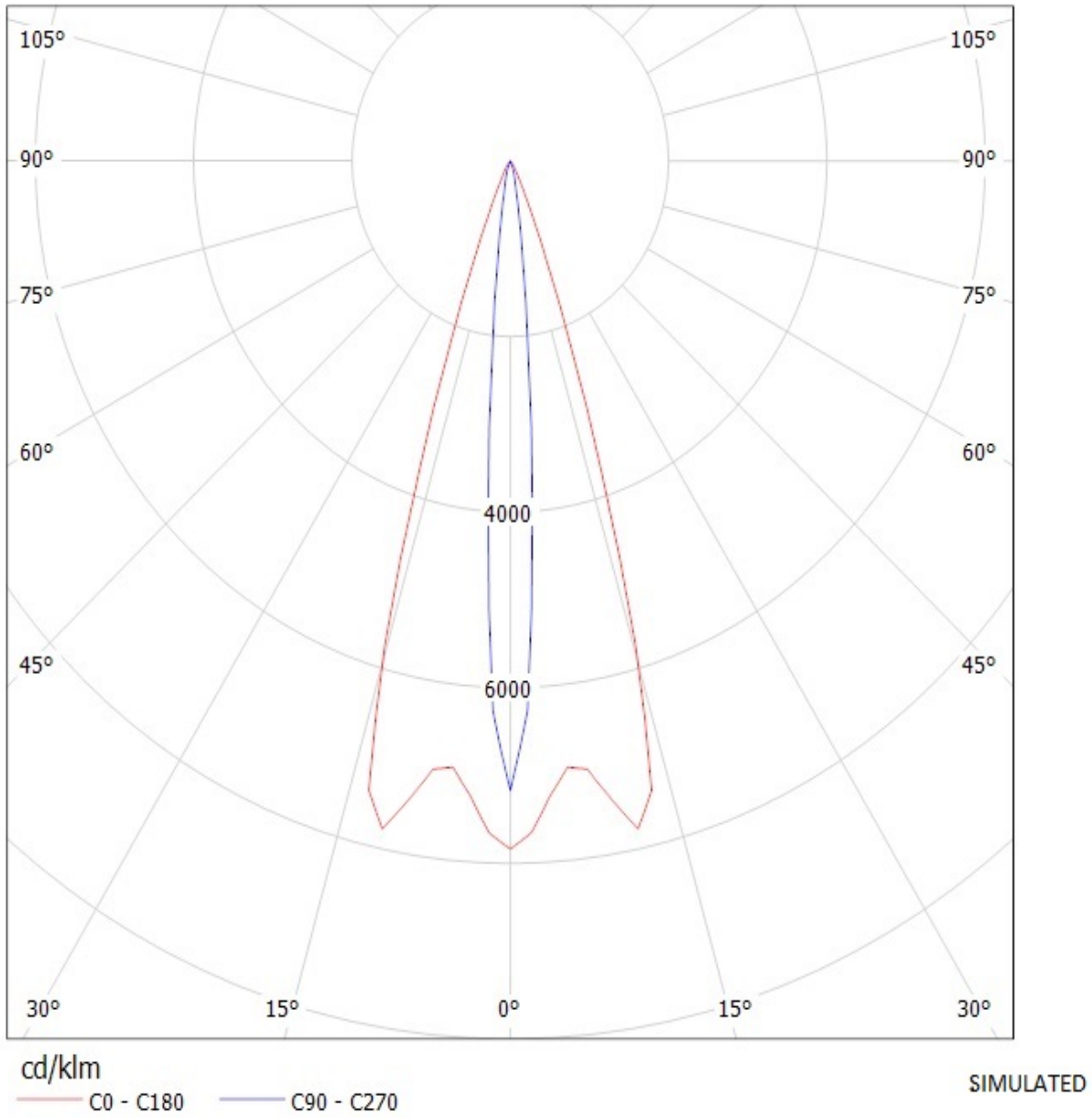
# Ledil Oy 10250\_Rocket-M 10250\_Rocket-M / LDC (Linear)

Luminaire: Ledil Oy 10250\_Rocket-M 10250\_Rocket-M  
Lamps: 1 x Cree XR-E (white)



# Ledil Oy 10325\_Rocket-O 10325\_Rocket-O / LDC (Polar)

Luminaire: Ledil Oy 10325\_Rocket-O 10325\_Rocket-O  
Lamps: 1 x Cree XR-E (white)

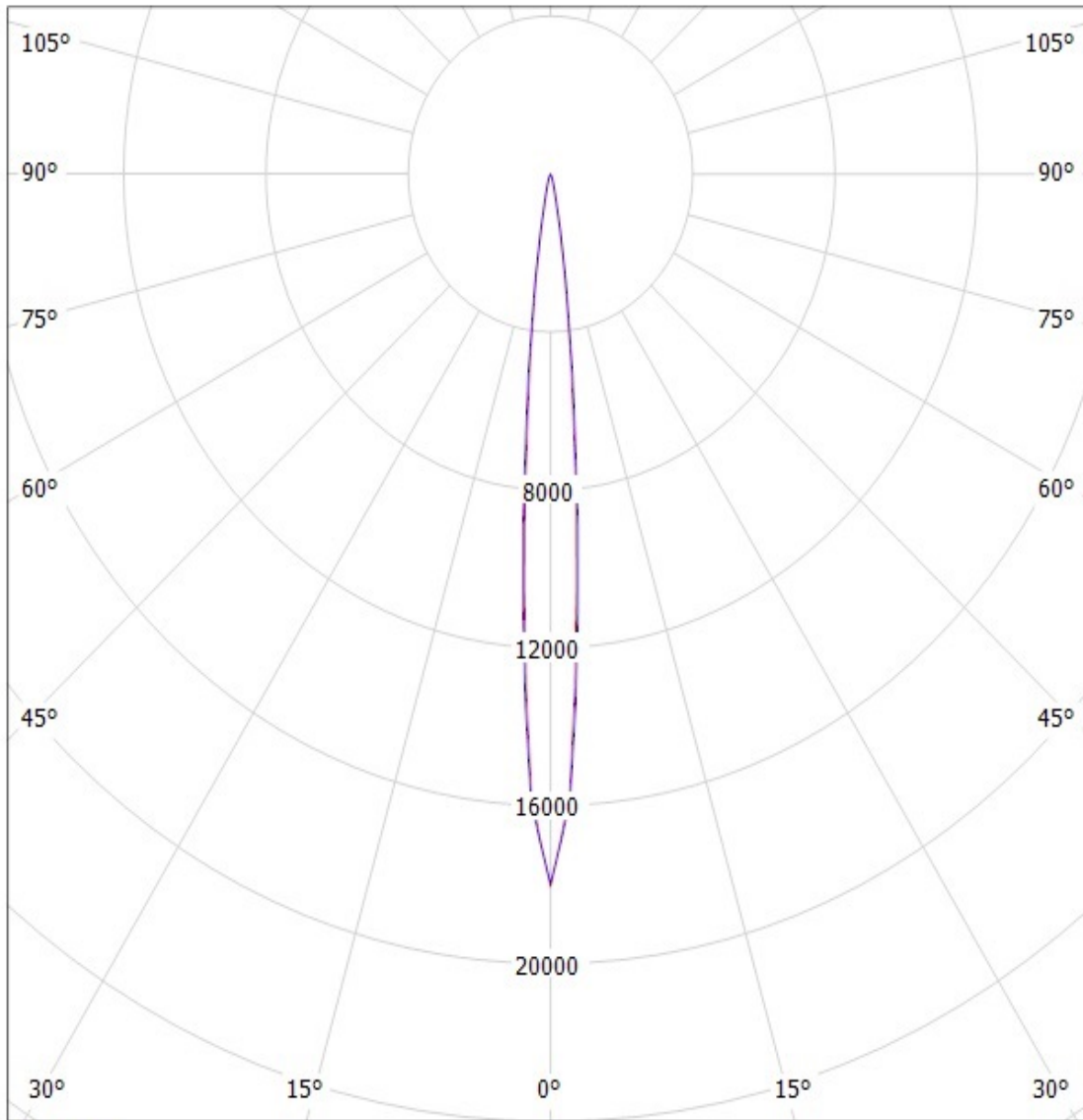




# Ledil Oy 10324\_Rocket-SS 10324\_Rocket-SS / LDC (Polar)

Luminaire: Ledil Oy 10324\_Rocket-SS 10324\_Rocket-SS

Lamps: 1 x Cree XR-E (white)



cd/klm

— C0 - C180

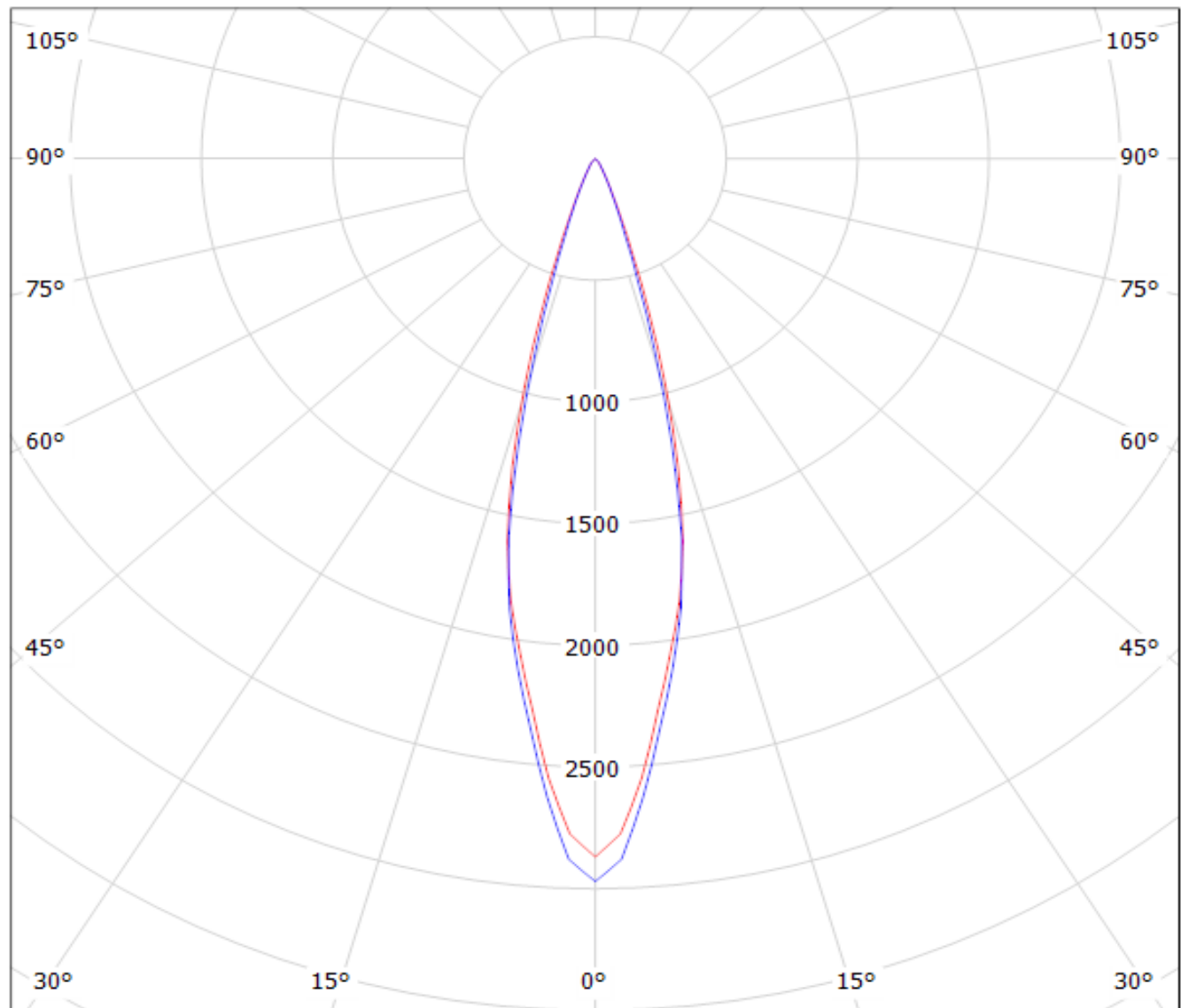
— C90 - C270

SIMULATED

# Ledil Oy 10250\_Rocket-M 10250\_Rocket-M / LDC (Polar)

Luminaire: Ledil Oy 10250\_Rocket-M 10250\_Rocket-M

Lamps: 1 x Cree XR-E (white)



cd/klm

— C0 - C180

— C90 - C270

SIMULATED