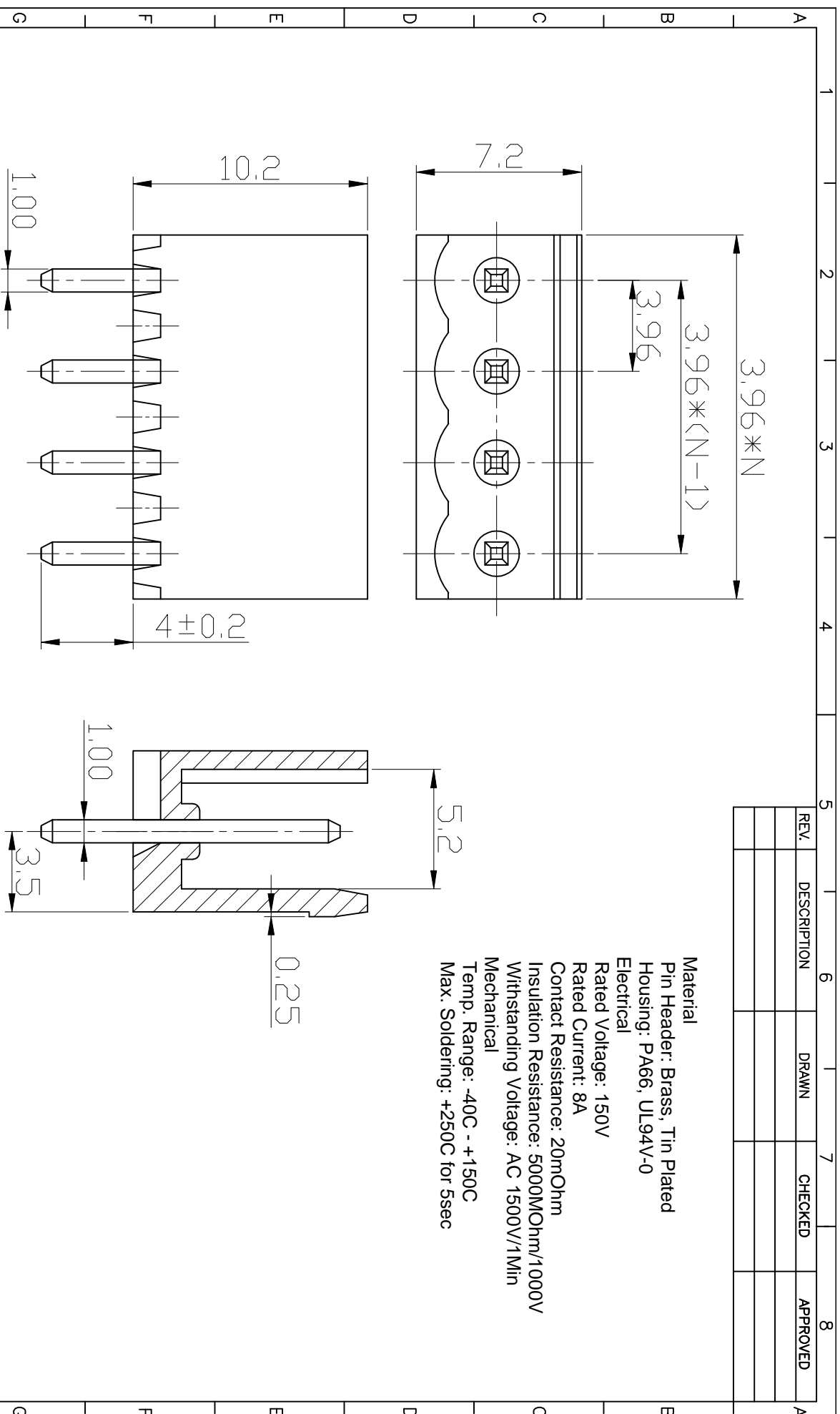


REV.	DESCRIPTION	DRAWN	CHECKED	APPROVED

Material
Pin Header: Brass, Tin Plated
Housing: PA66, UL94V-0
Electrical
Rated Voltage: 150V
Rated Current: 8A
Contact Resistance: 20mOhm
Insulation Resistance: 5000MOhm/1000V
Withstanding Voltage: AC 1500V/1Min
Mechanical
Temp. Range: -40C - +150C
Max. Soldering: +250C for 5sec



GENERAL TOLERANCE		ANGLE TOLERANCE		PROJECTION	TITLE
X	± 0.20	X	$\pm 2^\circ$	---	PLUGGABLE TERMINAL BLOCKS
.X	± 0.15	.X	$\pm 1^\circ$	mm	PITCH 3.96MM
.XX	± 0.10	.XX	$\pm 0.5^\circ$	SHEET SIZE	SERIES HT396V SERIES
DRAWING TYPE		SCALE		SHEET	
1:1		1:1		1 OF 1	
DRAWING NO.		SCALE		SHEET	

DFP 慈溪市凯峰电子有限公司
KAIFENG ELECTRONIC CO.,LTD