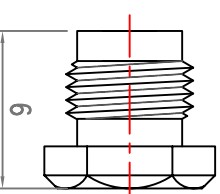
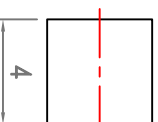
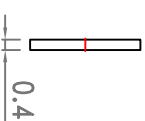
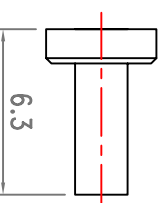
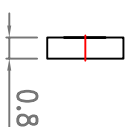
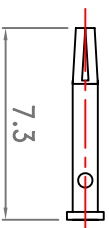
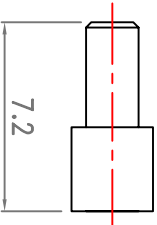
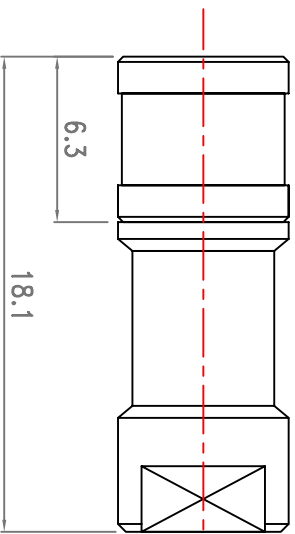


Revisions			
ISS	Symbol	Description	Date
B		CHE for New Drawing Frame & New PN System	2006/07/10



9	Clamp Nut	Brass	Gold
8	Washer	Brass	Gold
7	Gasket	Si. Rubber	Red
6	Washer	Brass	Gold
5	Ferrule	Brass	Gold
4	Bushing	PTFE	None
3	Pin	BeCu	30u" Gold
2	Insulator	PTFE	None
1	Body	Brass	Gold
ITEM	Description	Material	Finish

Scale	Abbr.	Date	Rev.
NTS	ST	2007.04.12	B

Proprietary Note
 This document contains information proprietary to S-Conn, which is either copyrighted, or patent applied for, and / or protected by trade secret laws.
 This document or parts thereof, may not be used disclosed or reproduced in any form by any method, or for any purpose, without the written permission of S-Conn, taken Customer P/N: Nil

DWG.NO. SB108A0G29-M

ROHS COMPLIANCE

TITLE: SMB Clamp Plug for RG174

S-Conn Enterprise Co., Ltd
 ISO 9001 Certified

Drawn	Checked	Approved
<i>Ryann</i> 2007.04.12	<i>Ryann</i> 2007.04.12	<i>G. Sun</i> 2007.04.12

Tolerances:
 X ±0.5
 .XX ±0.3
 .XXX ±0.2
 All Dimensions in mm (Unless Otherwise Specified)

QTY

Part Number