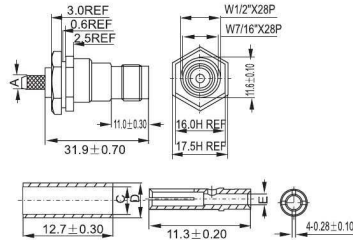


TNC FEMALE PANEL CRIMP TYPE (MOUNTING HOLE E)

(A) FOR RG-58C/U, 141A/U

(B) FOR RG-59B/U, 62A/U, 210/U

(C) FOR RG-6A/U, 5C2V



	A ± 0.10	C ± 0.10	D ± 0.10	E ± 0.05
RG-58U	φ3.2	φ5.5	φ6.5	φ1.05
RG-59U Thru-hole	φ3.1	φ5.0	φ5.7	φ1.05
RG-59U Teflon	φ2.9	φ4.8	φ5.7	φ1.05
RG-59UM2u	φ3.9	φ6.4	φ7.3	φ0.75
RG-59U Teflon	φ3.9	φ6.0	φ6.7	φ1.05
RG-62U Teflon	φ3.9	φ6.0	φ6.7	φ0.78
RG-6U	φ4.9	φ7.6	φ8.1	φ1.2
RG-8U	φ4.1	φ6.5	φ7.3	φ1.6
Beiden 8281	φ5.3	φ8.2	φ9.1	φ1.05

