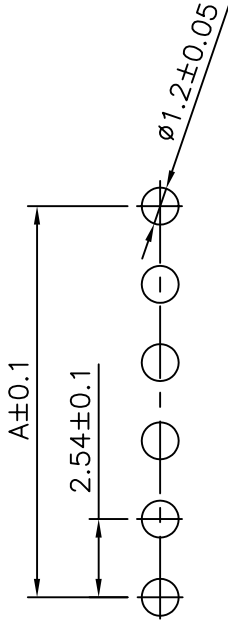


■ SPECIFICATIONS

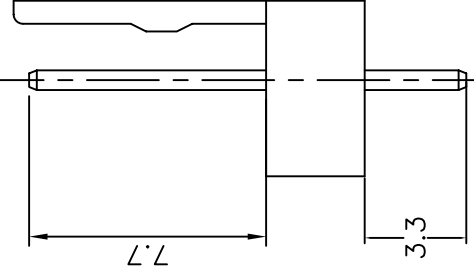
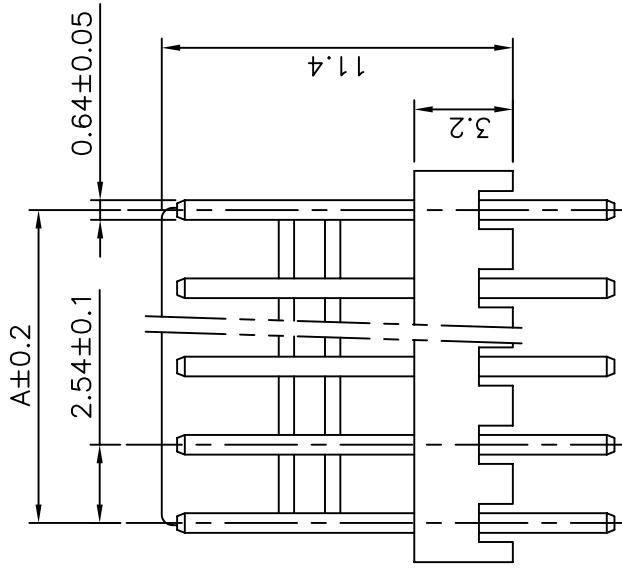
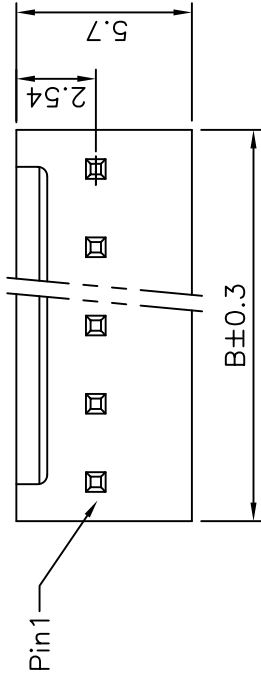
- Voltage Rating : 250V AC/DC
- Current Rating : 3A AC/DC
- Withstanding Voltage : 1000V AC/minute
- Insulation Resistance : 1000MΩ min
- Temperature Range : - 25°C to + 85°C
- Contact Resistance : 20mΩ max

■ WAFER

- Part No. : JS-6001-XX
- JS-6001-XX : GP Produces
- PolesN : 2-15
- Material : Contact : Brass, Tin Plated
Base : Nylon 66 UL94V-2
- Q' ty : 1000 pcs./Bag



Recommand PCB Layout



Poles	Part No.	Dimensions(mm)	
		A	B
2	JS-6001-2	2.54	5.08
3	JS-6001-3	5.08	7.62
4	JS-6001-4	7.62	10.16
5	JS-6001-5	10.16	12.70
6	JS-6001-6	12.70	15.24
7	JS-6001-7	15.24	17.78
8	JS-6001-8	17.78	20.32
9	JS-6001-9	20.32	22.86
10	JS-6001-10	22.86	25.40
11	JS-6001-11	25.40	27.94
12	JS-6001-12	27.94	30.48
13	JS-6001-13	30.48	33.02
14	JS-6001-14	33.02	35.56
15	JS-6001-15	35.56	38.10



喬訊電子工業股份有限公司
CHYAO SHIUNN
ELECTRONIC INDUSTRIAL LTD.

PART NO JS-6001-XX

2.54mm Crimp Style Connectors Wafer

APPROVED BY	SCALE	UNIT	TOLERANCE	LTR	REVISION RECORD	DATE	LTR	REVISION RECORD	DATE
林曉鏢	4:1	mm	.0 ±0.3	ECR	DG 200507-005	05/07/19			
CHECKED BY	PROJ	VER NO.	.00 ±0.2	ECR	DG 200509-004	05/09/16			
			.000 ±0.1	ECR	RoHS Compliant	07/01/03			
DRAWN BY	DATE	SIZE	ALL ±				CUSTOMER		
余秀麗	2005/07/19	A4	ANGLE				Conforms to The RoHS Instruction		
			0° ±						
			.0° ±						