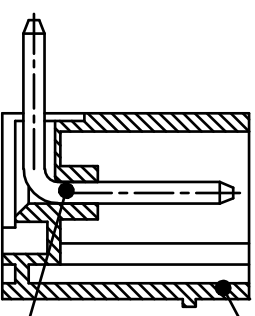
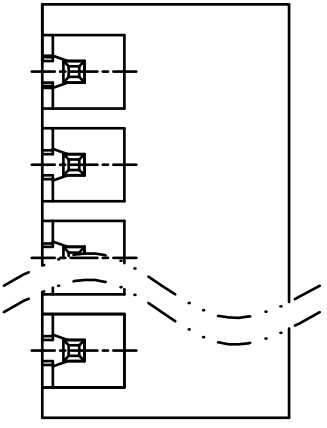
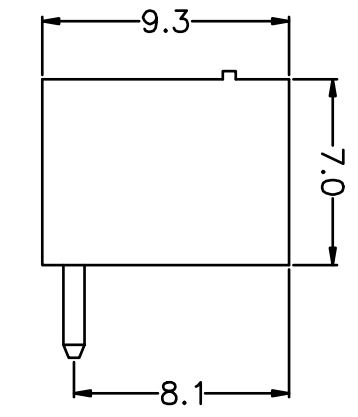
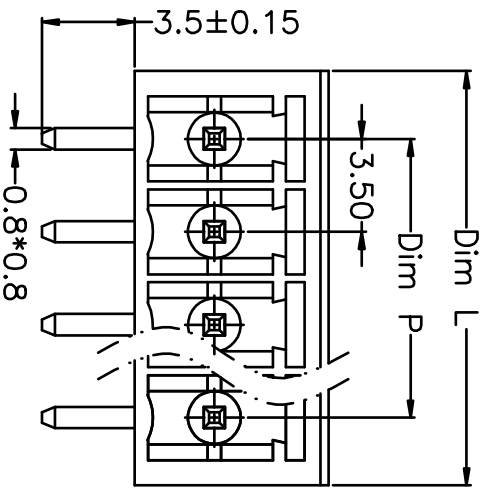


REV.	DESCRIPTION	DATE	DRAWN	APPROVED
A1	DWG.REL	2016/10/7	FANG	YANG

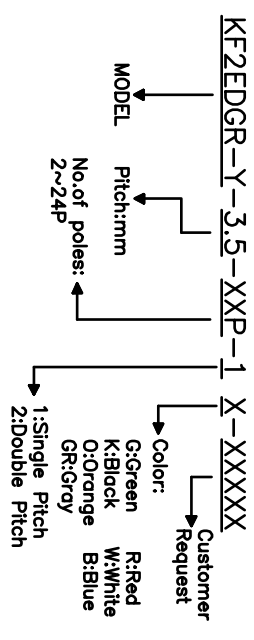


①  
②

- Material  
 ØHousing : PA66, UL94V-0  
 ØPin header : Brass, Tin plated
- Electrical  
 UL IEC  
 Rated voltage : 300V 250V  
 Rated current : 8A 7A  
 Insulation resistance: 500MΩ/DC500V  
 Withstanding Voltage : AC1500V/1min

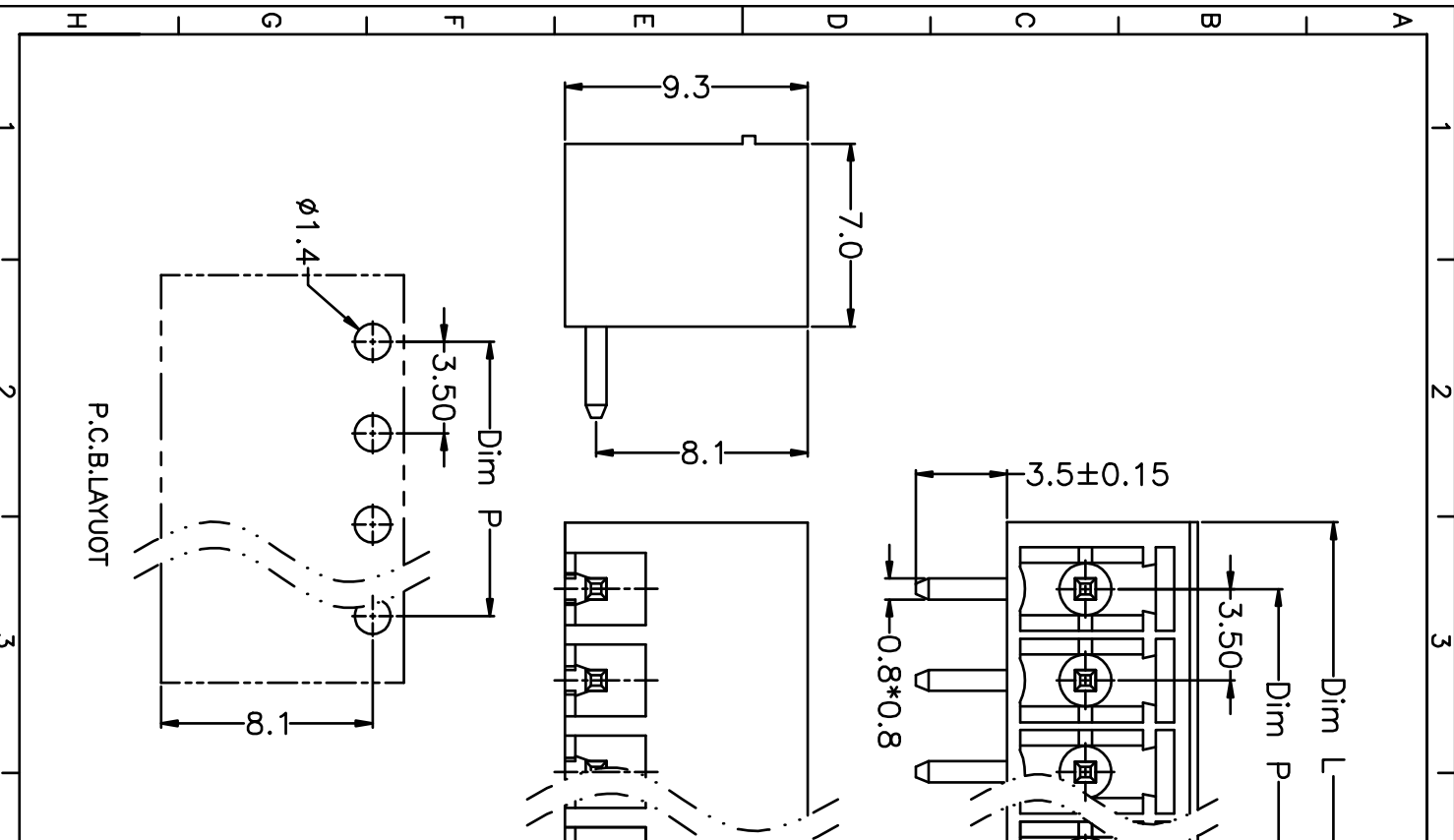
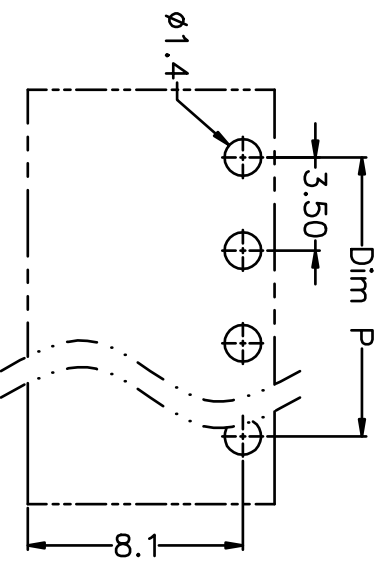
- Mechanical  
 Operating temperature: -40°C~+105°C  
 Soldering temperature: 250°C±5/5sec

HOW TO ORDER



N=Number of Poles  
 Dim P=(N-1)\*3.50  
 Dim L=N\*3.50+1.6

Poles	Dim P	Dim L
2-6P	±0.10	±0.15
7-12P	±0.20	±0.20
13-18P	±0.25	±0.30
19-24P	±0.30	±0.40



GENERAL TOLERANCE	ANGLE TOLERANCE
X: ±0.5	X: ±5°
.X: ±0.3	X: ±3°
.XX: ±0.1	.XX: ±1°

DRAWING TYPE	CUSTOMER
SCALE	1:1
DRAWING NO.	XP0012016-xxxx

PROJECTION	TITLE
UNITS: mm	KF2EDGR-Y-3.5-XXP
SHEET SIZE: A4	SERIES: KF2EDGR-Y

**凯峰电子有限公司**  
 CIXI KAIFENG ELECTRONIC CO.,LTD