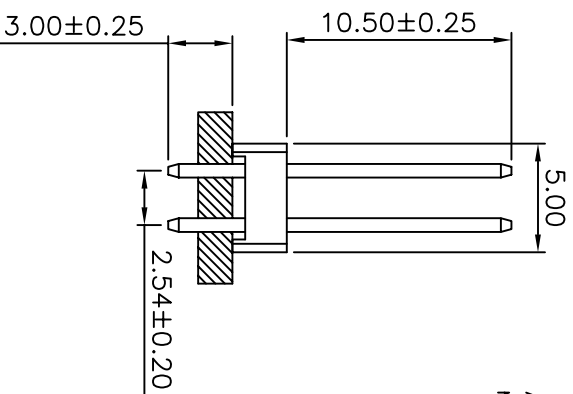
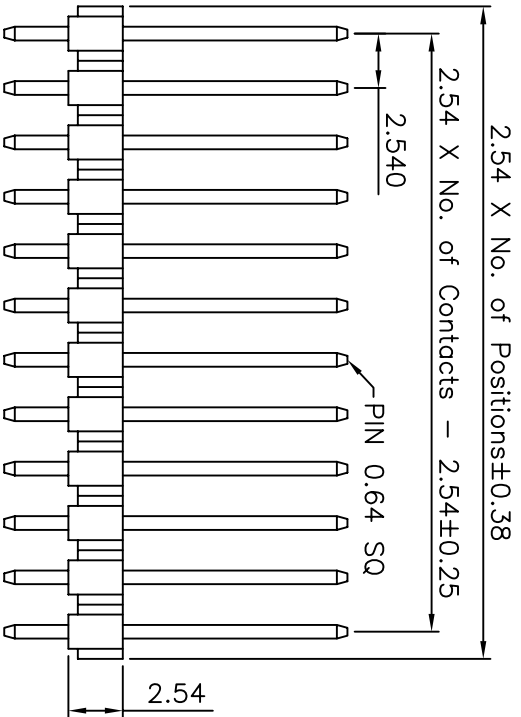
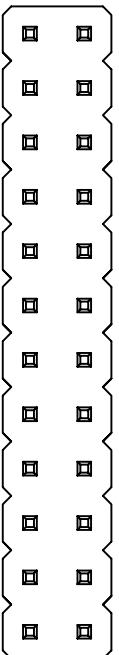
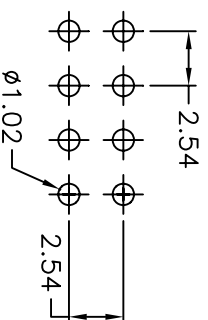


REV.	DESCRIPTION	DATE
△	變更料號	2009.04.10



Recommended P.C.Board
Hole Layout



Ordering Information

G PHA201 - XX XX A160 A 1 B X
 No. of Pins per Row
 Standard Plating
 02=Gold Flash
 Selective plating
 01=Tin
 05=Gold Flash/Tin
 Standard Packing
 A=Box
 Selective Packing
 C=Tube

格 稜 股 份 有 限 公 司
Greenconn Corporation

REV.	UNIT	SCALE	
02	mm	3:1	

GENERAL TOLERANCE	
X. ± 5'	.X. ±
X. ± 2'	.X. ± 0.38
XX. ± 1'	.XX. ± 0.25
XXX. ± 0.5'	.XXX. ± 0.13

DRAWN	彭思城
CHECK	
APPROVE	

DATE	2009.04.10
DATE	
DATE	

DWG. NO.	△ GPHA201-A160A1BX
PART NO.	△ GPHA201-XXXXXA160A1BX

TITLE	2.54 PIN HEADER DUAL ROW DIP TYPE BASE 2.54H
-------	--

Specifications
 Current Rating: 3Amp
 Insulation Resistance: 1000MΩ Min.
 Dielectric Withstanding: 600V AC/DC
 Contact Resistance: 20mΩ Max.
 Operating Temperature: -40°C to +105°C

Materials
 Contact Material: Copper Alloy
 Insulation Material: Polyester, UL 94V-0 P.B.T

All materials must meet Greenconn requirement for environment protection.