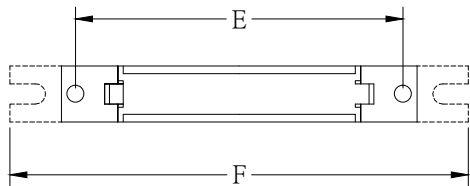
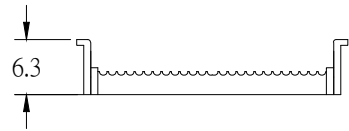
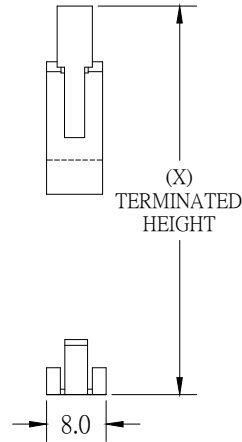
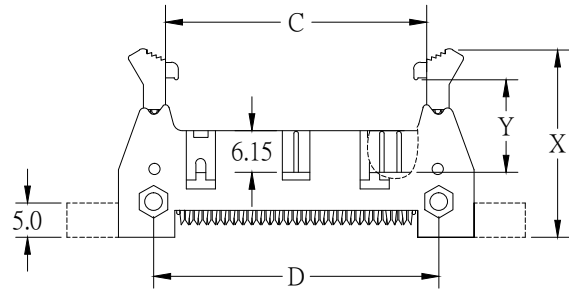
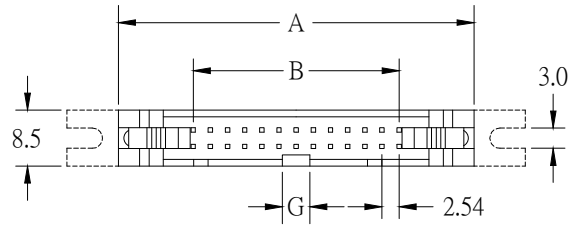


RoHS



POSITION	A	B	C	D	E	F	G
06	26.90	5.08	12.86	16.75	22.84	42.10	2.5
08	29.44	7.62	15.40	19.29	25.38	44.64	2.5
10	31.98	10.16	17.94	21.83	27.92	47.18	4.1
14	37.06	15.24	23.02	26.91	33.00	52.26	4.1
16	39.60	17.75	25.56	29.45	35.54	54.80	4.1
20	44.68	22.86	30.64	34.53	40.62	59.88	4.1
24	49.76	27.94	35.72	39.61	45.70	64.96	4.1
26	52.30	30.48	38.26	42.15	48.24	67.50	4.1
30	57.38	35.56	43.34	47.23	53.32	72.58	4.1
34	62.46	40.64	48.42	52.31	58.40	77.66	4.1
40	70.08	48.26	56.04	59.93	66.02	85.28	4.1
50	82.78	60.96	68.74	72.63	78.72	97.98	4.1
60	95.48	73.66	81.44	85.33	91.42	110.68	4.1
64	100.56	78.74	86.52	90.41	96.50	115.76	4.1


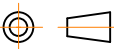
ACCESSORIES	X	Y
LONG LATCH	29.2	14.6
SHORT LATCH	25.6	10.6

**SPECIFICATIONS**

**MATERIAL**  
 Insulator : PBT, glass reinforced, rated UL 94V-0  
 Contact : Brass

**ELECTRICAL**  
 Current Rating : 1 Amp  
 Contact Resistance : 30 mΩ max.  
 Insulation Resistance : 3000 MΩ min.  
 Dielectric Withstanding Voltage : 500V AC for 1 minute  
 Operating Temperature : -40°C to +105°C

◆ Terminated with L01-1.27mm pitch flat ribbon cable.  
 ◆ Mating Suggestion : A01, A03a, A29 & A35 series.

UNLESS OTHERWISE SPECIFIED, TOLERANCE ARE :		 <b>DON CONNEX</b> ELECTRONICS CO., LTD
.X	±0.3	
.XX	±0.2	PART NAME :
.XXX	±0.1	SHROUDED HEADER IDC TYPE WITH STEEL SWIN-LOCK
UNIT : mm		DRAW NO.   A16a-01CAT-A
SCALE : /	SHEET : 1/1	FILE NO.   X
3RD ANGLE		RD   DATE   2013/12/06