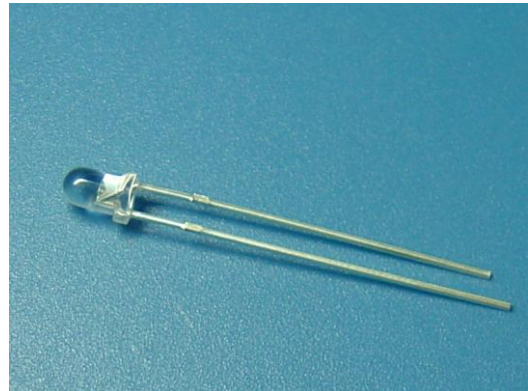


**ATTENTION**  
OBSERVE PRECAUTIONS  
FOR HANDLING  
ELECTROSTATIC  
DISCHARGE  
SENSITIVE  
DEVICES

**HL-308H256WC-HD**



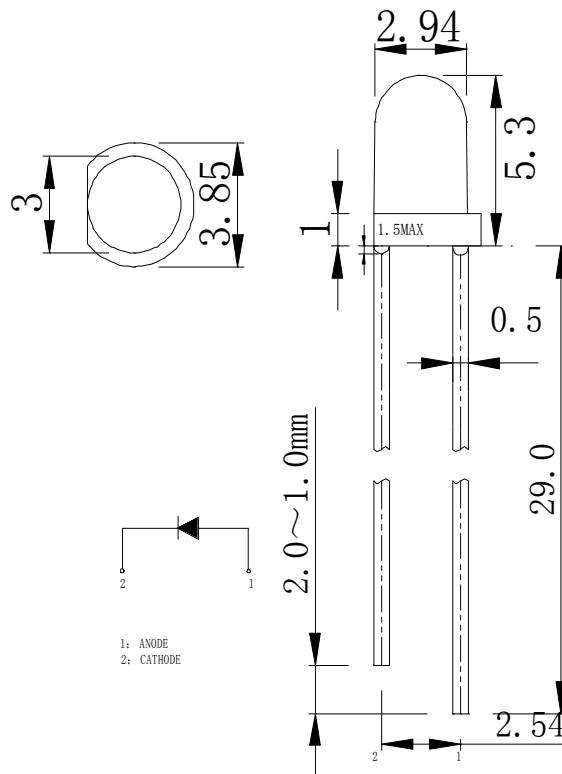
**Features**

- φ 3 LAMP LED.
- LOW POWER CONSUMPTION.
- CABINED VIEWING ANGLE.
- IDEAL FOR BACKLIGHT、LIGHTING AND INDICATOR.
- PACKAGE: 1000PCS / BAG.

**Package Dimensions**

**Description**

This devices are made with InGaN.



Tolerance Grade	Dimension Tolerance (UNIT:mm)			
	0.5~3	3~6	6~30	30~120
	±0.1	±0.2	±0.3	±0.5
Chip		Lens Color		
Material	Emitting Color	Water Clear		
InGaN	White			

**■ Absolute Maximum Rating**

Item	Symbol	Value	Unit
Forward Current	$I_F$	20	mA
Peak Forward Current*	$I_{FP}$	100	mA
Reverse Voltage	$V_R$	5	V
Power Dissipation	$P_D$	80	mW
Electrostatic discharge	$E_{SD}$	1000	V
Operation Temperature	$T_{opr}$	-30~+80	°C
Storage Temperature	$T_{stg}$	-30~+80	°C
Lead Soldering Temperature*	$T_{sol}$	Max. 260°C for 5sec Max.	

\* $I_{FP}$  Conditions: Pulse Width  $\leq 10$ msec

\* $T_{sol}$  Conditions: 3mm from the base of the epoxy bulb

**■ Typical Optical/ Electrical Characteristics**  $T_a=25^\circ\text{C}$ 

Item	Symbol	Condition	Rank	Min.	Typ.	Max.	Unit
Luminous Intensity	$I_v$	$I_F=20\text{mA}$	Z	6370		8280	mcd
			Z1	8280		10750	mcd
			Z2	10750		14000	mcd
Forward Voltage	$V_F$			2.8	3.2	3.6	V
Viewing Angle	$2\theta\ 1/2$			--	25	--	deg
Chromaticity coordinates	X				--	0.31	--
	Y			--	0.32	--	Y: $\pm 0.025$
Recommend Forward Current	$I_F(\text{rec})$	--		--	--	20	mA
Reverse Current	$I_R$	$V_r=5\text{V}$		--	--	10	$\mu\text{A}$

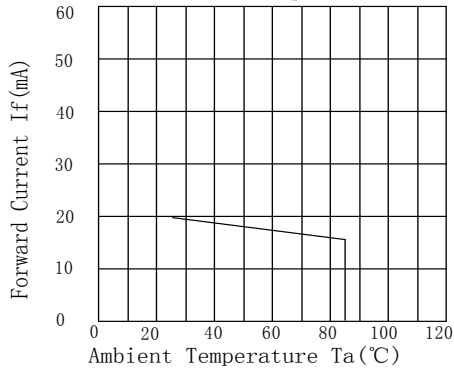
Notes:

Tolerance :  $V_F \pm 0.1\text{V}$ ,  $\lambda\ d \pm 2\ \text{nm}$ ,  $I_V(\phi\ \text{V}) \pm 15\%$ ,  $2\theta\ 1/2 \pm 15\%$

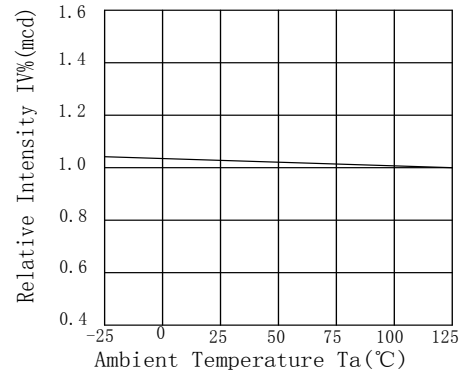
The above color coordinates measurement allowance tolerance  $\pm 0.003$



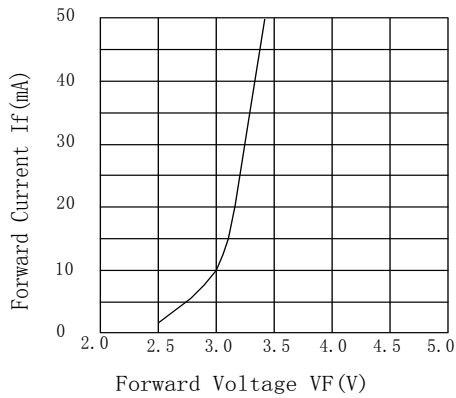
Forward Current vs.  
Ambient Temperature



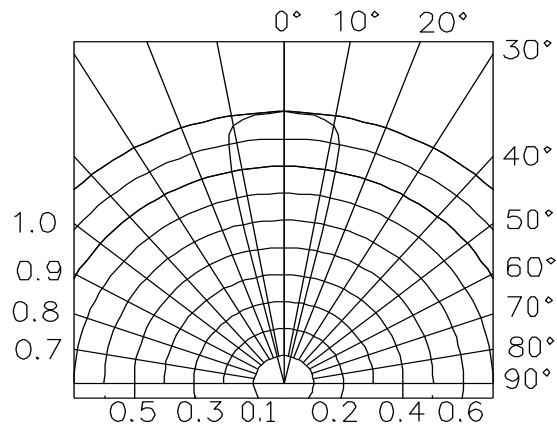
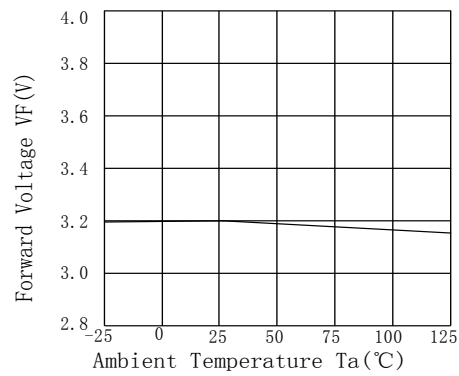
Relative Intensity vs.  
Ambient Temperature

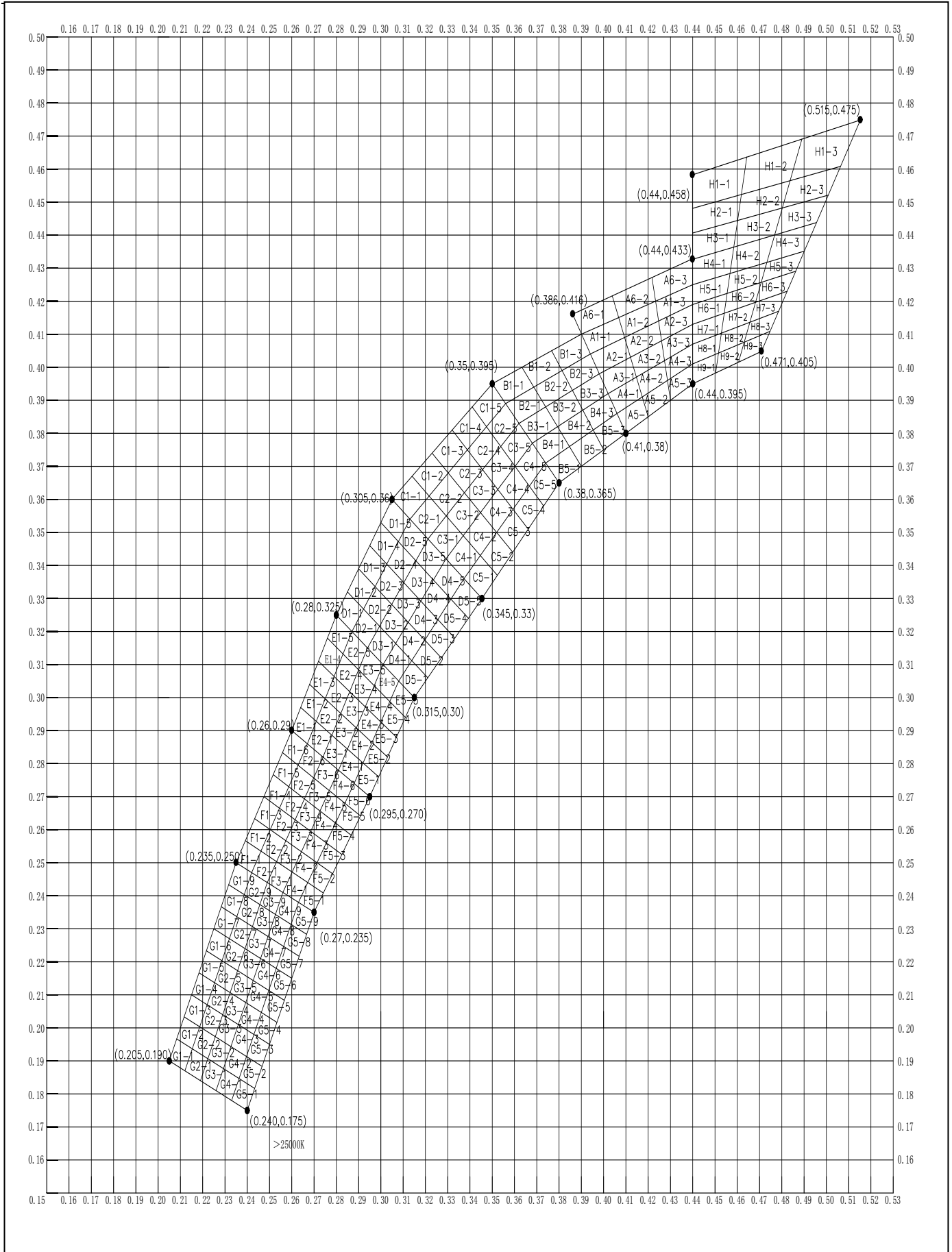


Forward Current vs.  
Forward Voltage



Forward Voltage vs.  
Ambient Temperature





**Soldering:**

## 1. Manual Of Soldering

The temperature of the iron tip should not be higher than 300°C and Soldering within 3 seconds per solder-land is to be observed.

## 2. DIP soldering (Wave Soldering):

Preheating: 120°C~150°C, within 120~180 sec.

Operation heating: 245°C ± 5°C within 5 sec. 260°C (Max)

Gradual Cooling (Avoid quenching).

