

DETAILS

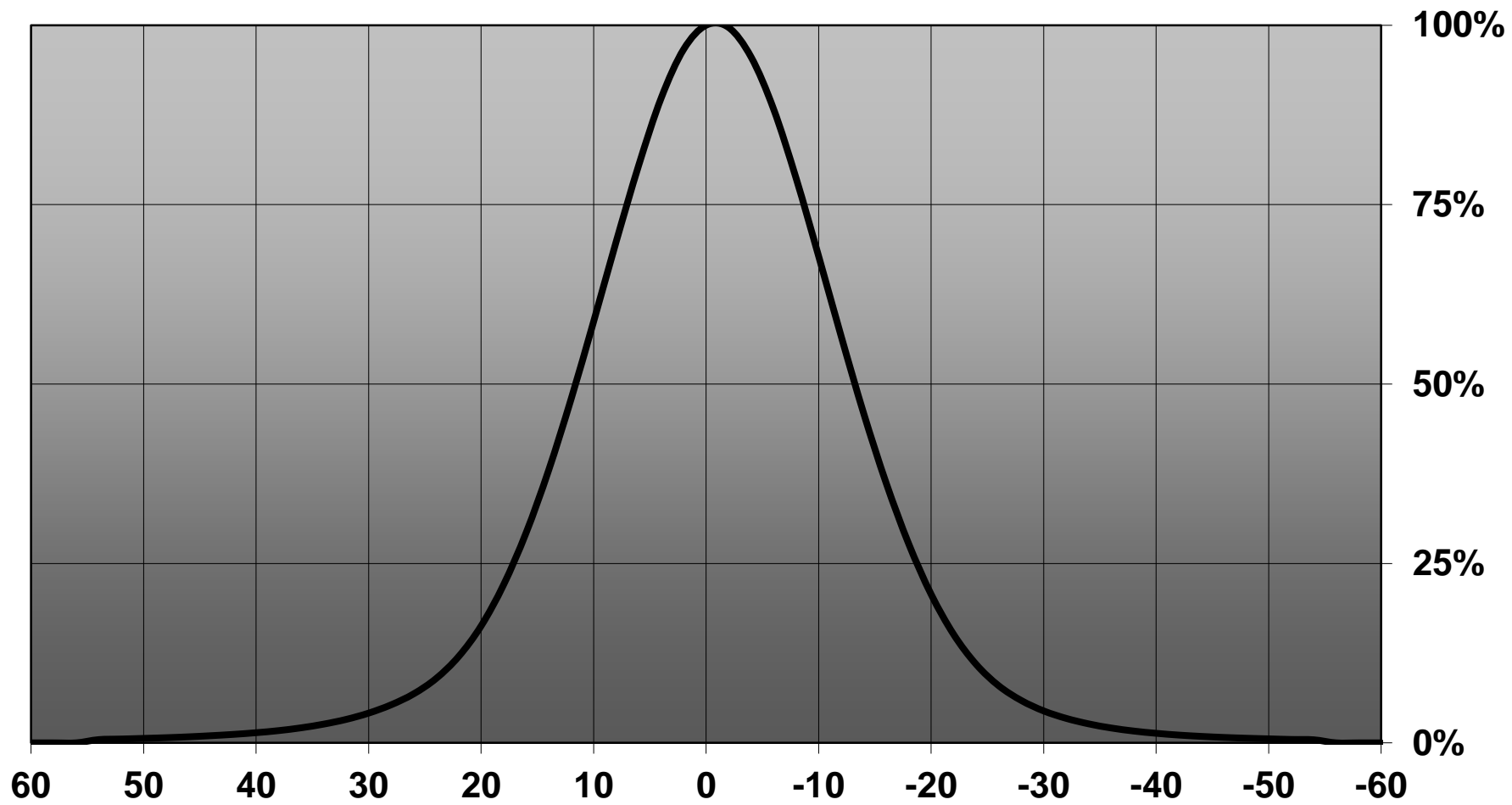
Product Number	C10685_EVA-M
Family	Eva
Type	Lens
Color	clear
Diameter	35 mm
Height	16,4 mm
Style	round
Optic Material	PMMA
Holder Material	
Fastening	
Status	production ready
ROHS Compliant	Yes
Date Updated	25/04/2014



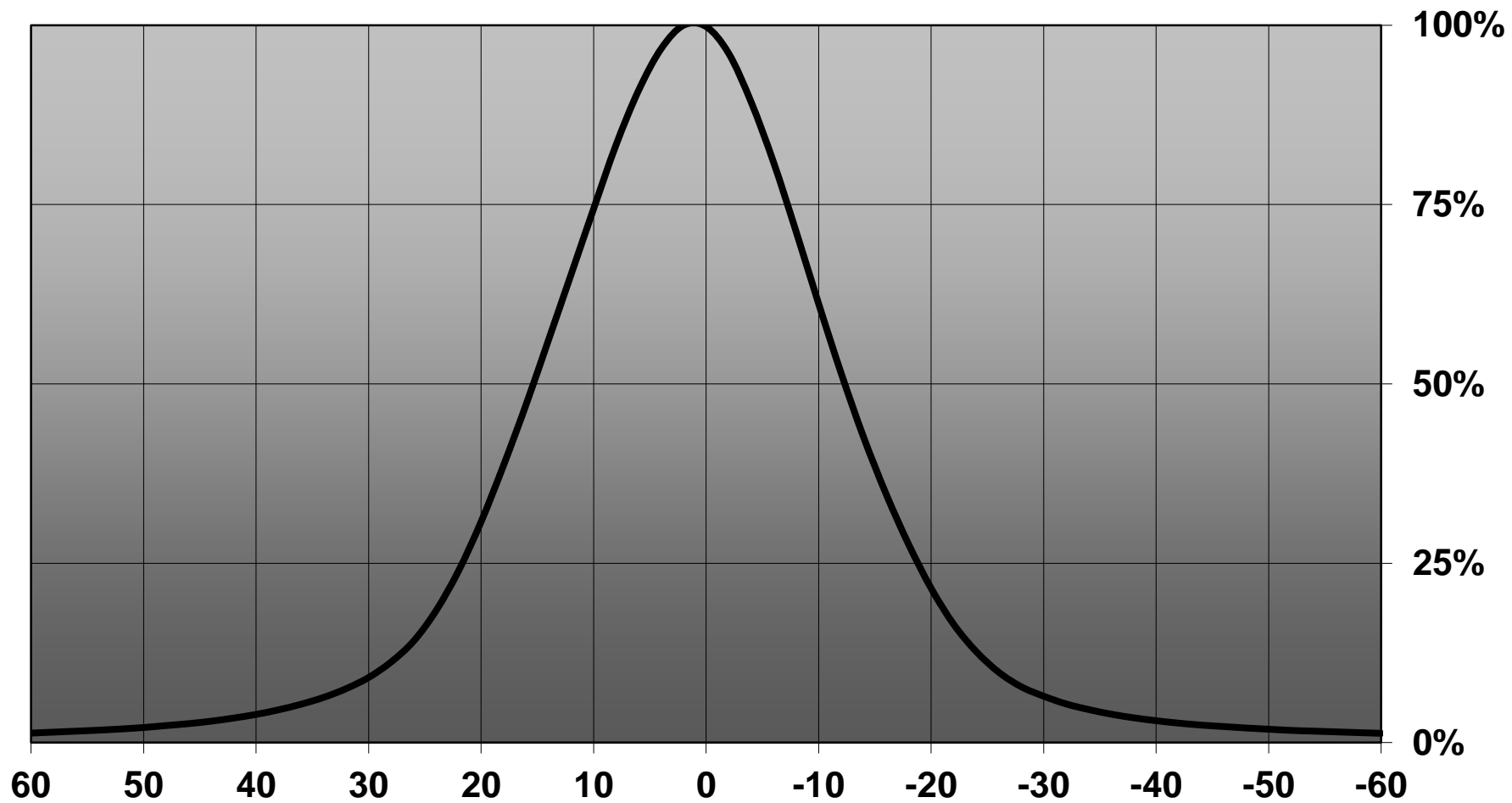
OPTICAL PROPERTIES

LED	Viewing Angle	Light Beam	Efficiency	cd/lm	Connector
MC-E	22 deg	Medium	89 %	3.000	-
XM-L	24 deg	Medium	88 %	-	-
XM-L HVW	sim: 26	Medium	90 %	-	-
XT-E	24 deg	Medium	-	3.700	-
XP-G2	24 deg	Medium	88 %	4.200	-
MHB-A	25 deg	Medium	82 %	3.630	-
XHP35 HI	28 deg	Medium	78 %	2.300	-
LUXEON M	26 deg	Medium	89 %	2.800	-
LUXEON MZ	24 deg	Medium	87 %	4.200	-
LUXEON 5258	sim: 24	Medium	sim: 93 %	sim: 4.300	-
LUXEON 5050	25 deg	Medium	85 %	3.300	-
NS9x383	24 deg	Medium	88 %	3.700	-
NSMx286M	26 deg	Medium	88 %	3.000	-
Duris S8	25 deg	Medium	86 %	4.000	-
Duris P10	sim: 25	Medium	sim: 93 %	sim: 3.820	-
Z8Y15	24 deg	Medium	83 %	4.270	-
Z8Y19	24 deg	Medium	84 %	4.230	-

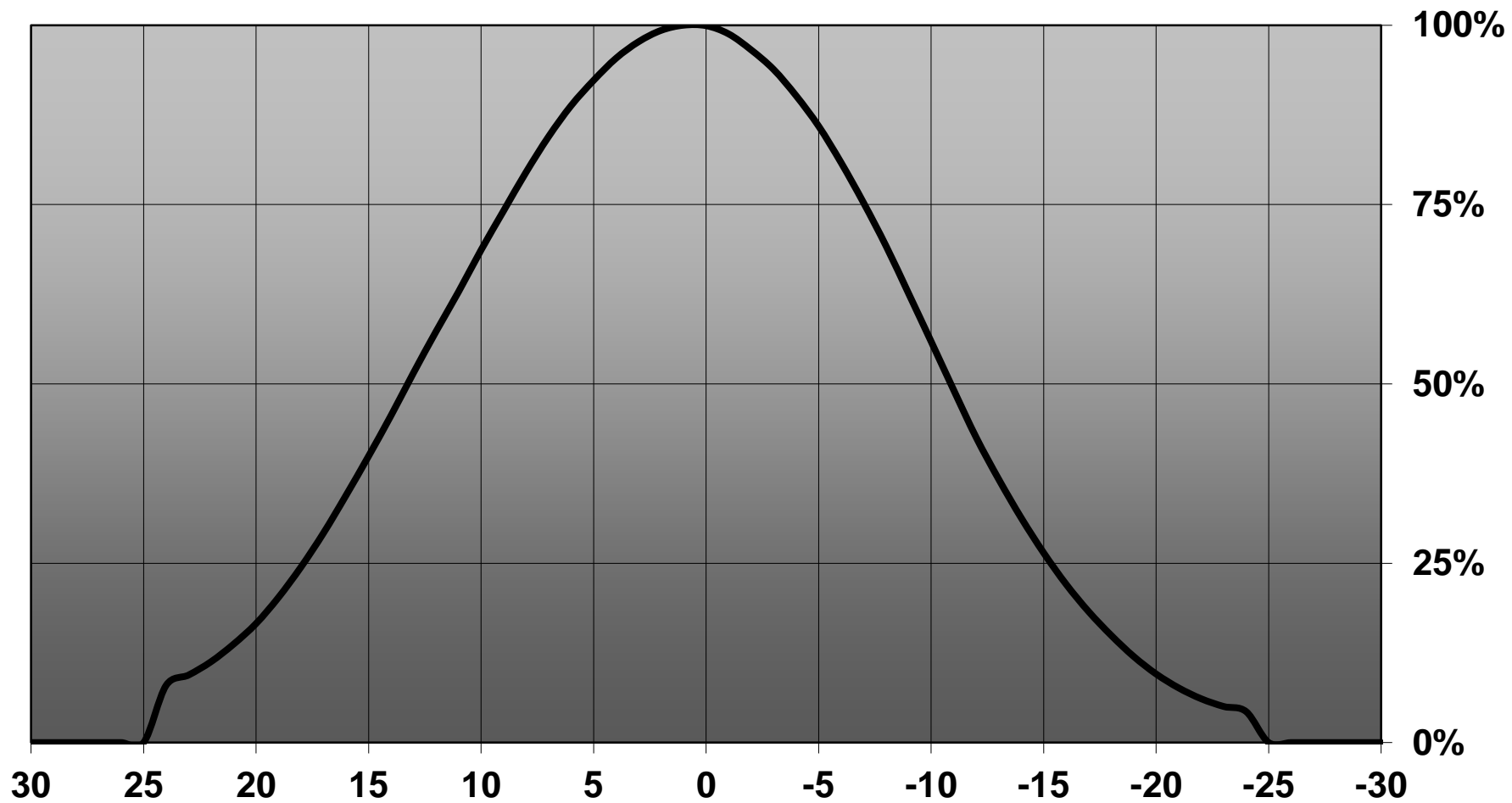
Relative intensity of C10685_EVA-M_(MH-B)



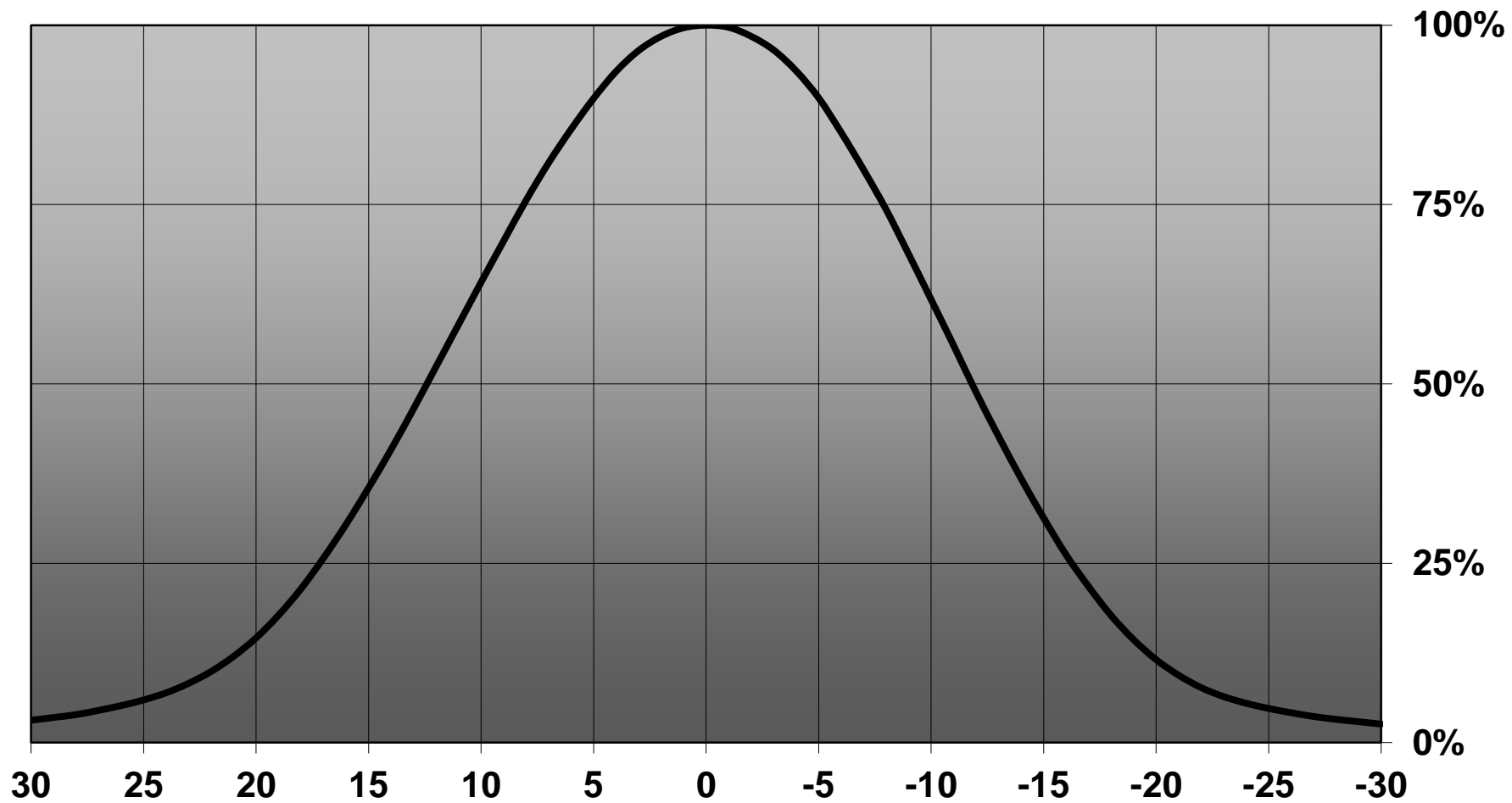
Relative intensity of C10685_EVA-M_(XHP35_HI)



Relative intensity of C10685_EVA-M_(SZ8Y15)



Relative intensity of C10685_EVA-M_(SZ8Y19)

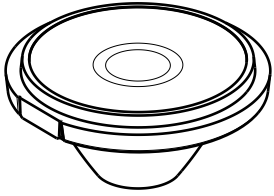


D

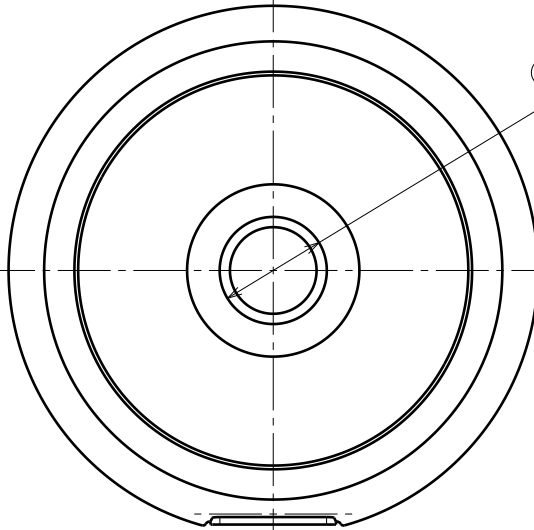
C

B

A

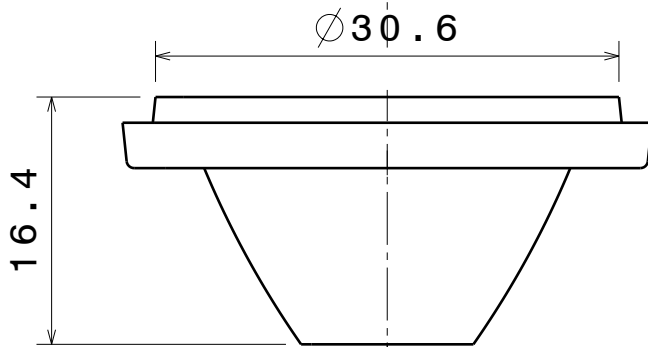


Isometric view



Bottom view

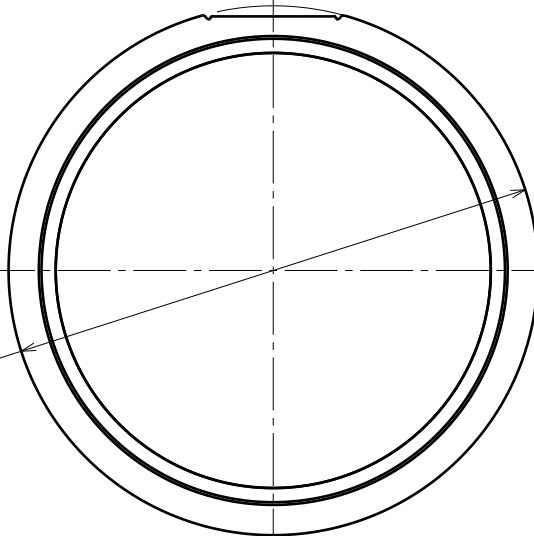
$\phi 7.1$



Side view

$\phi 30.6$

16.4



Top view

$\phi 35$

Tolerances if not otherwise shown:
 According to DIN ISO 2768-1
 Linear measures:
 Up to 30mm class M, otherwise class C.

According to DIN ISO 2768-2
 Form and position:
 class L

Raw material(s):
 PMMA 8N

Material: PMMA

This drawing is our property. It can't be reproduced or communicated without our written agreement.



Ledil Oy
Salorankatu 10
24100 SALO
Finland

DRAWING TITLE

Datasheet Eva Medium Lens

DRAWN BY
ah

DATE
1.3.2013

CHECKED BY

DATE

SIZE
A4

DRAWING NUMBER

10685

REV
2

DESIGNED BY
HH

DATE
26.08.2008

SCALE

2:1

WEIGHT (g)

SHEET

1/1

D

A

4

3

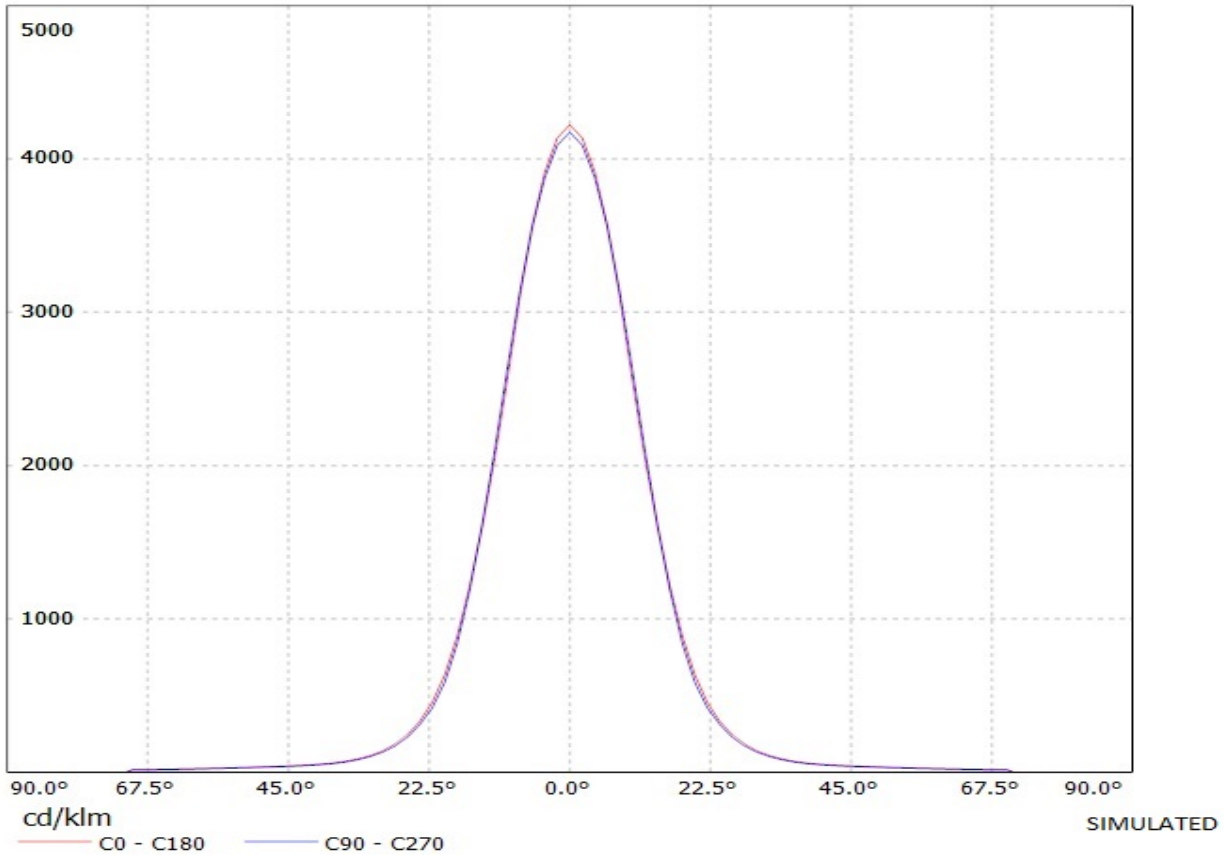
2

1

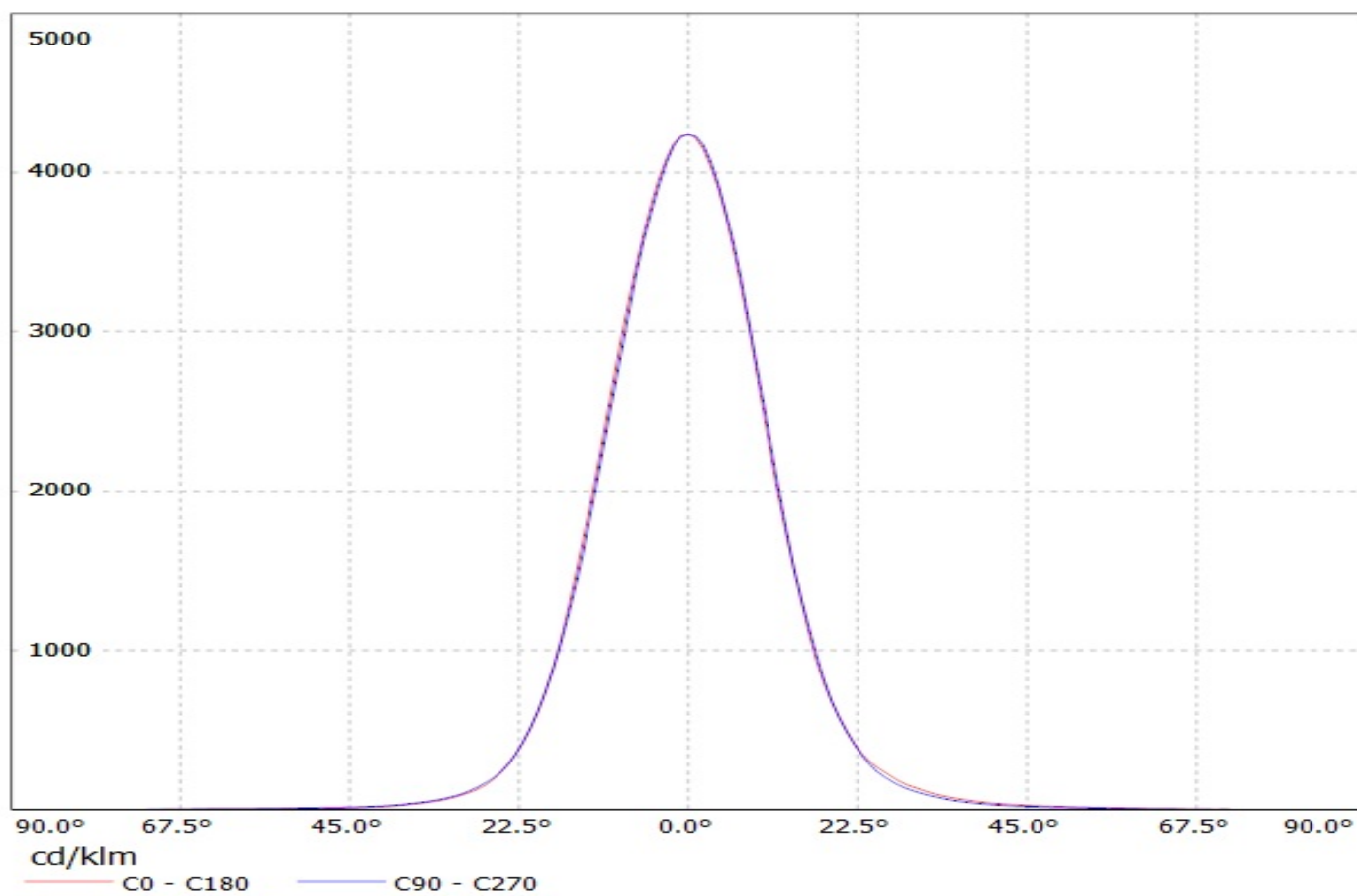
1

Ledil Oy C10685_EVA-M C10685_EVA-M / LDC (Linear)

Luminaire: Ledil Oy C10685_EVA-M C10685_EVA-M
Lamps: 1 x Cree MC-E (white)

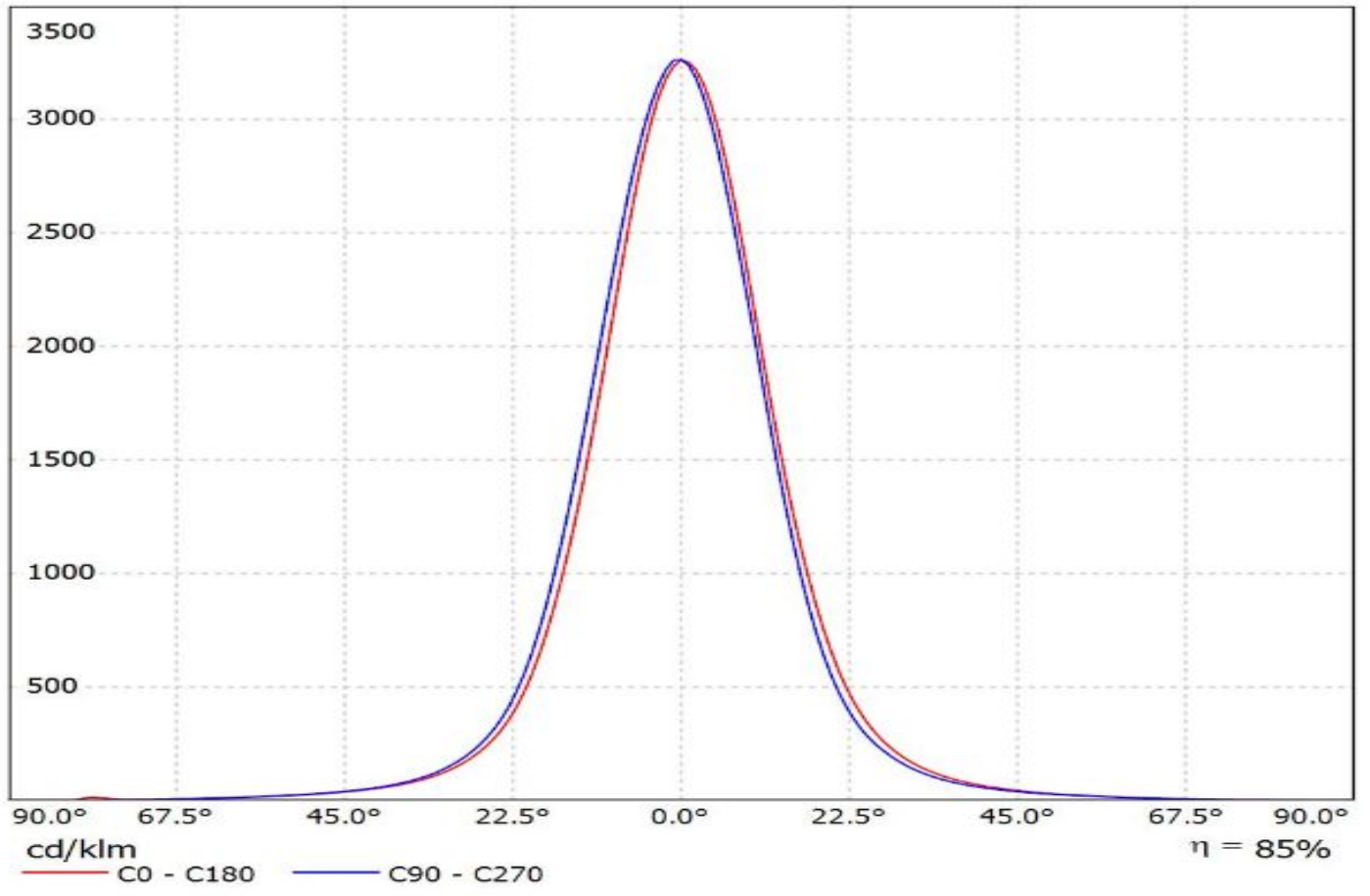


Luminaire: LEDil Oy C10685_EVA-M_(Luxeon_MZ) Efficiency=87%
Lamps: 1 x Philips Lumileds Luxeon MZ (389lm @ 250mA) CCT=3800K P=2.8W I=250mA

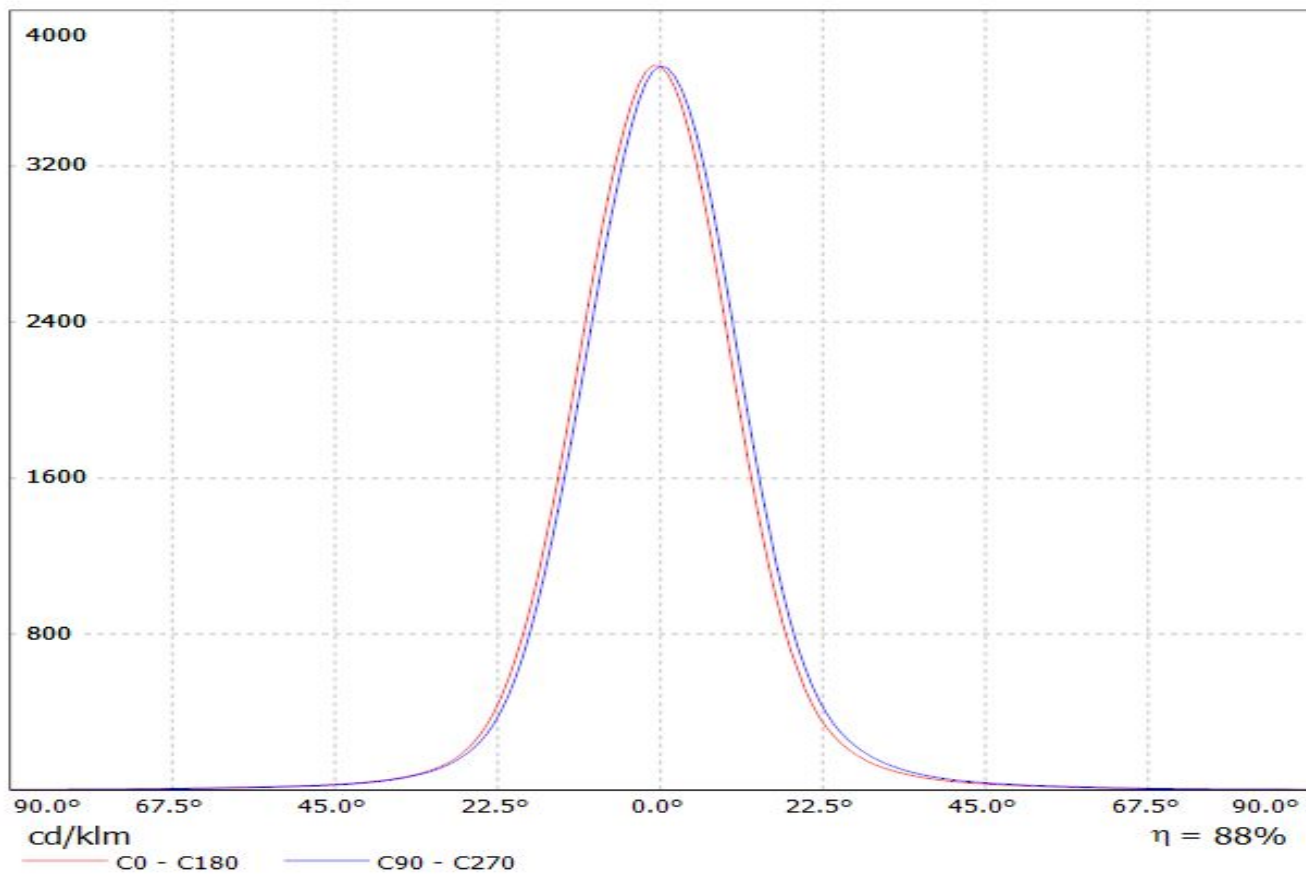


Luminaire: LEDiL Oy C10685 EVA-M (Luxeon_5050)

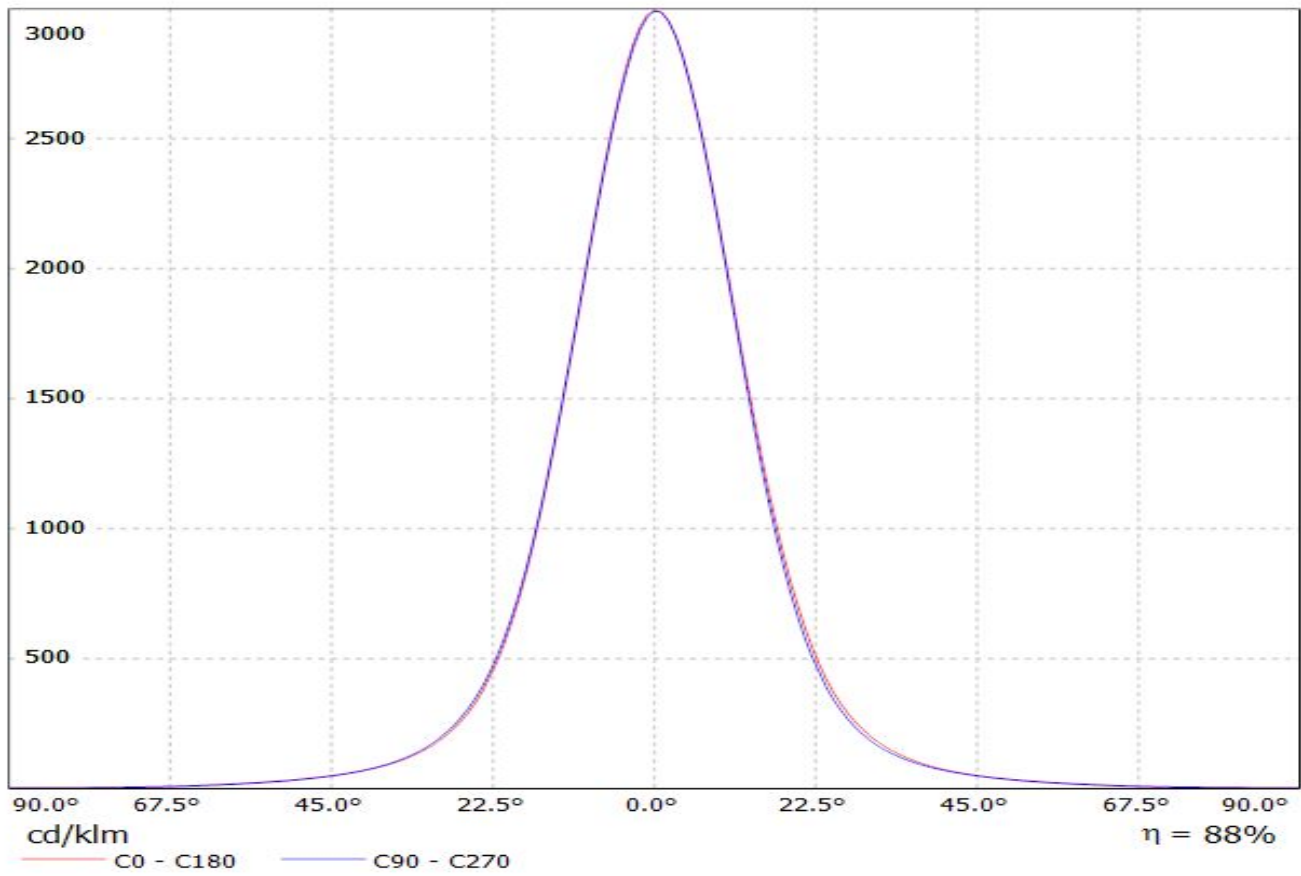
Lamps: 1 x Luxeon_5050_316.623lm@80mA_CCT=5700K_P=1.82294W_I=0.080A_70CRI



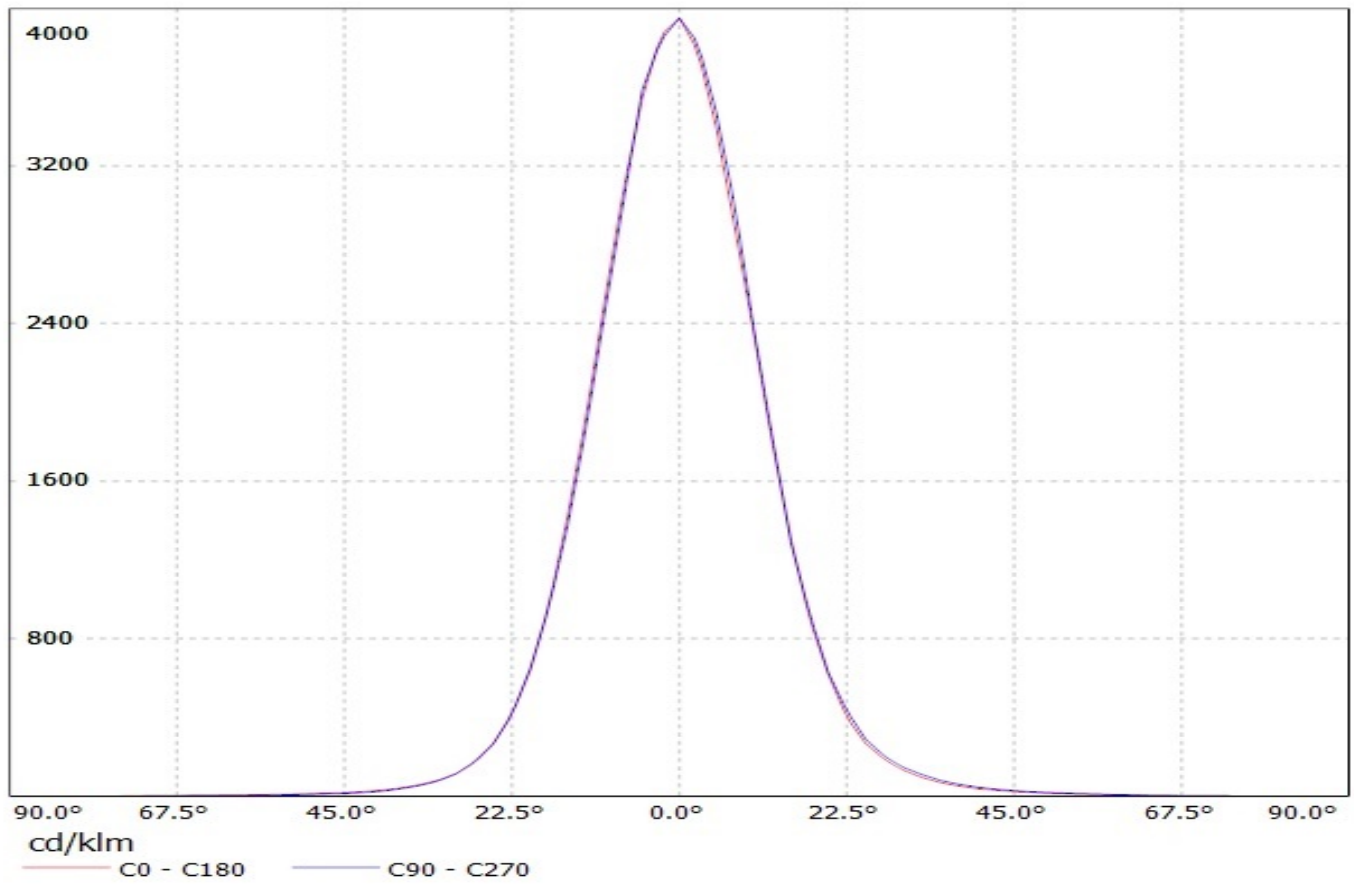
Luminaire: LEDiL Oy C10685_EVA-M Eff.87.9%
Lamps: 1 x Nichia NS9x383 (107.656lm@250mA)



Luminaire: LEDiL Oy C10685_EVA-M_(NICHIA_286) Eff.88.4%
Lamps: 1 x NICHIA_286_(NSML286ME) 322.274lm@100mA CCT=3000K P=3.42532W I=100.1mA

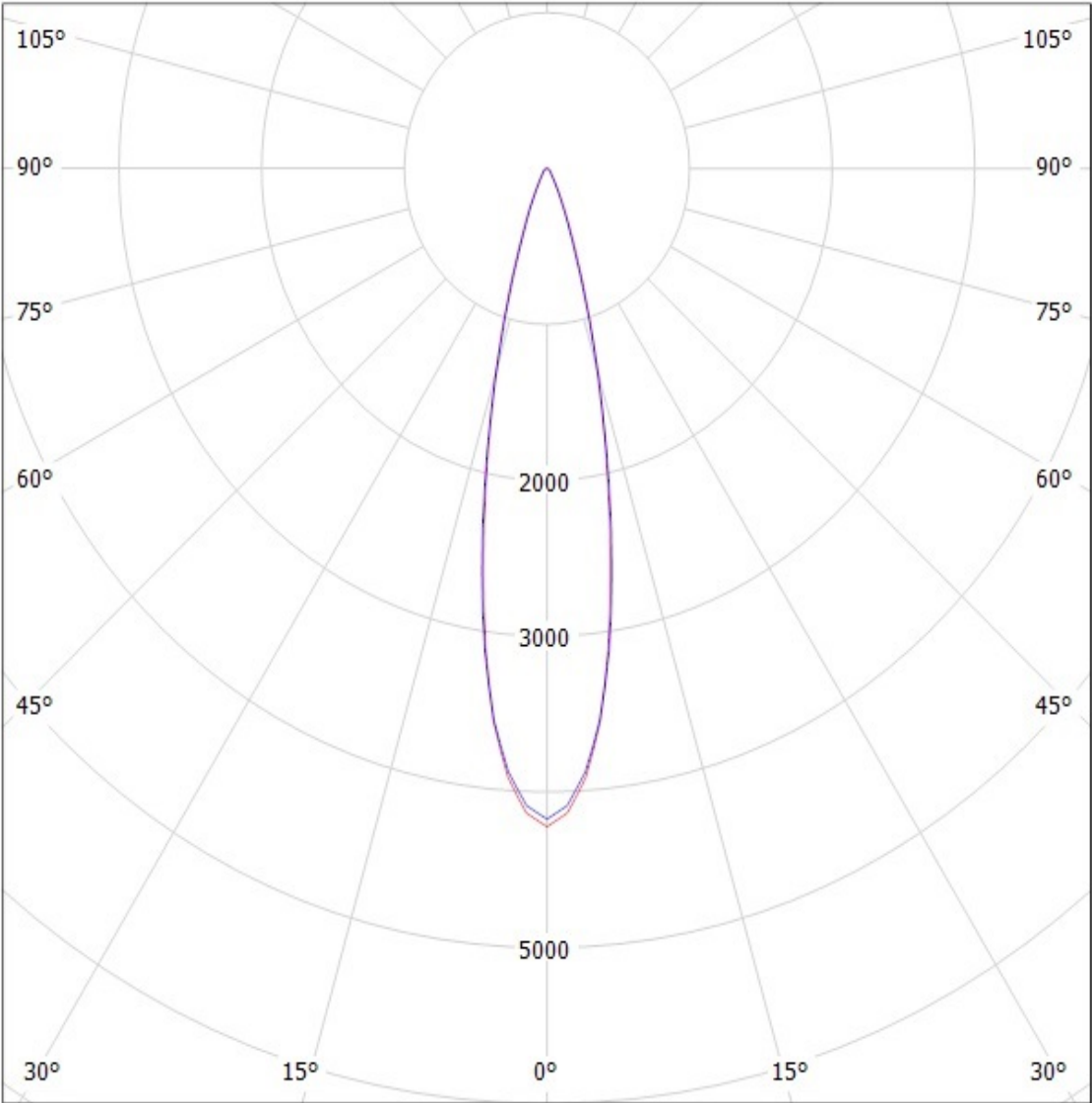


Luminaire: LEDil Oy C10685_EVA-M_(DURIS_S8) Efficiency=86%
Lamps: 1 x Osram DURIS S8 (GW P9LMS1.ÉC) 192lm @ 100mA CCT=2900K P=1.8W I=100mA



Ledil Oy C10685_EVA-M C10685_EVA-M / LDC (Polar)

Luminaire: Ledil Oy C10685_EVA-M C10685_EVA-M
Lamps: 1 x Cree MC-E (white)

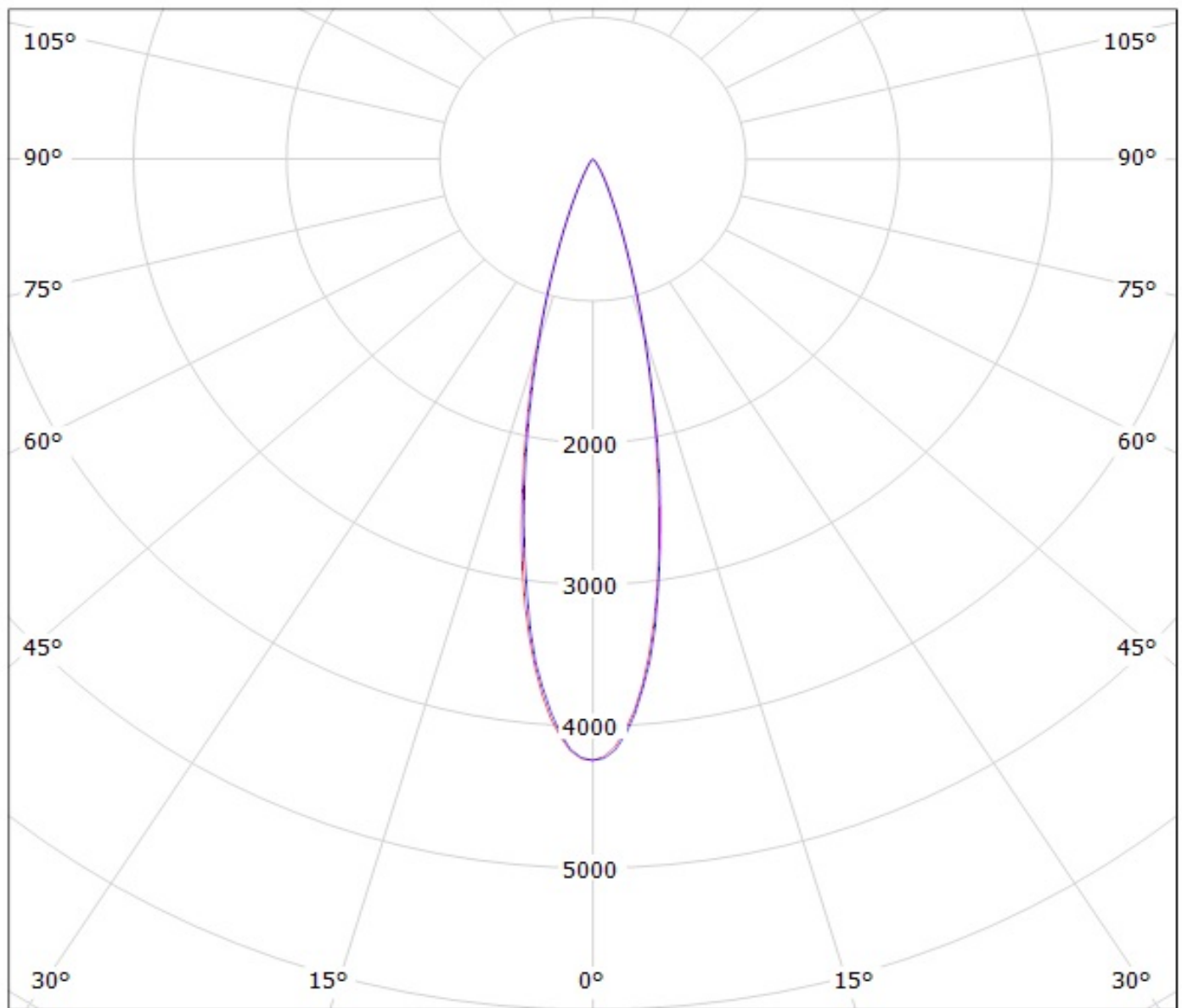


SIMULATED

cd/klm

— C0 - C180 — C90 - C270

Luminaire: LEDil Oy C10685_EVA-M_(Luxeon_MZ) Efficiency=87%
Lamps: 1 x Philips Lumileds Luxeon MZ (389lm @ 250mA) CCT=3800K P=2.8W I=250mA



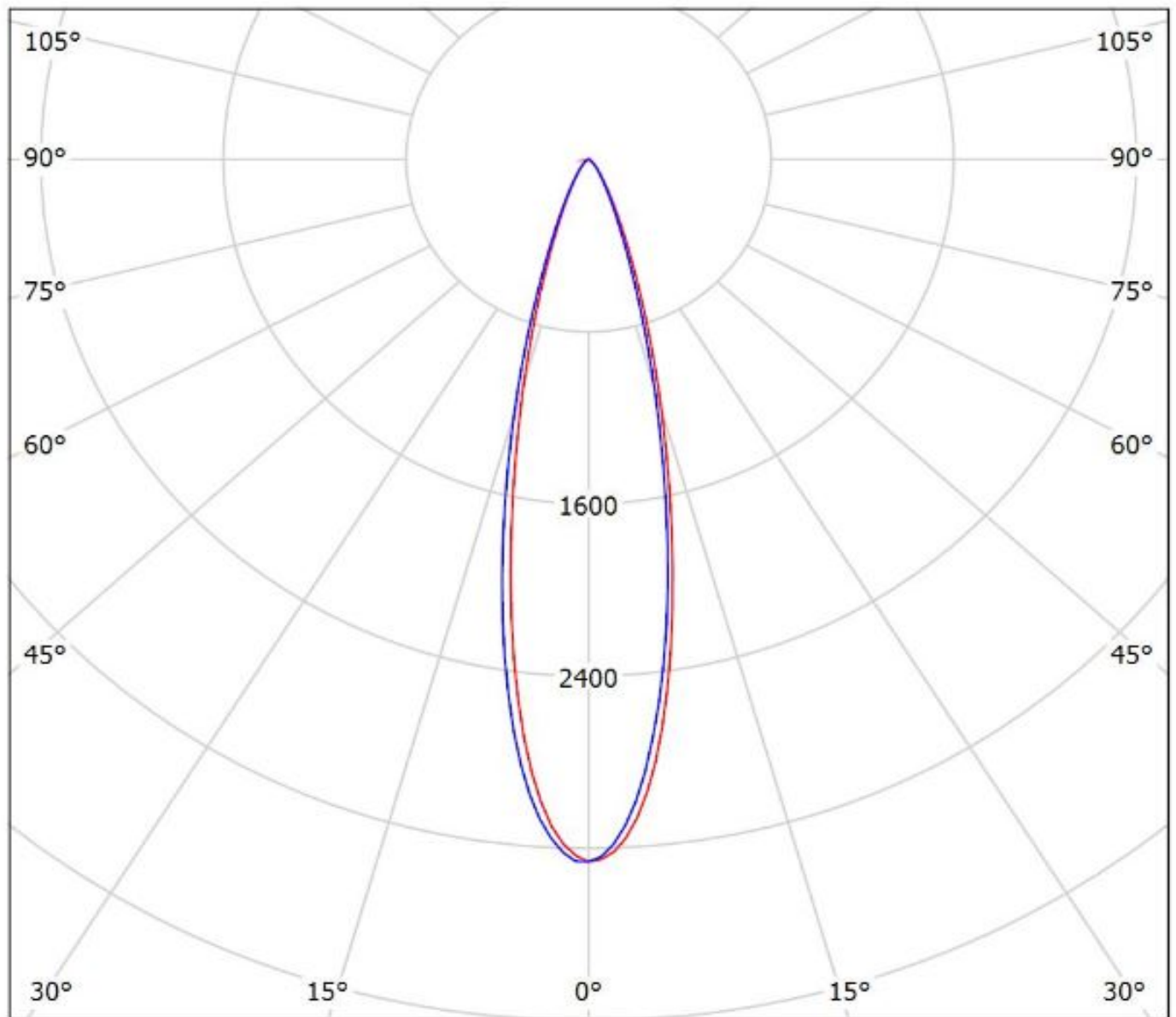
cd/klm

— C0 - C180

— C90 - C270

Luminaire: LEDiL Oy C10685_EVA-M_(Luxeon_5050)

Lamps: 1 x Luxeon_5050_316.623lm@80mA_CCT=5700K_P=1.82294W_I=0.080A_70CRI



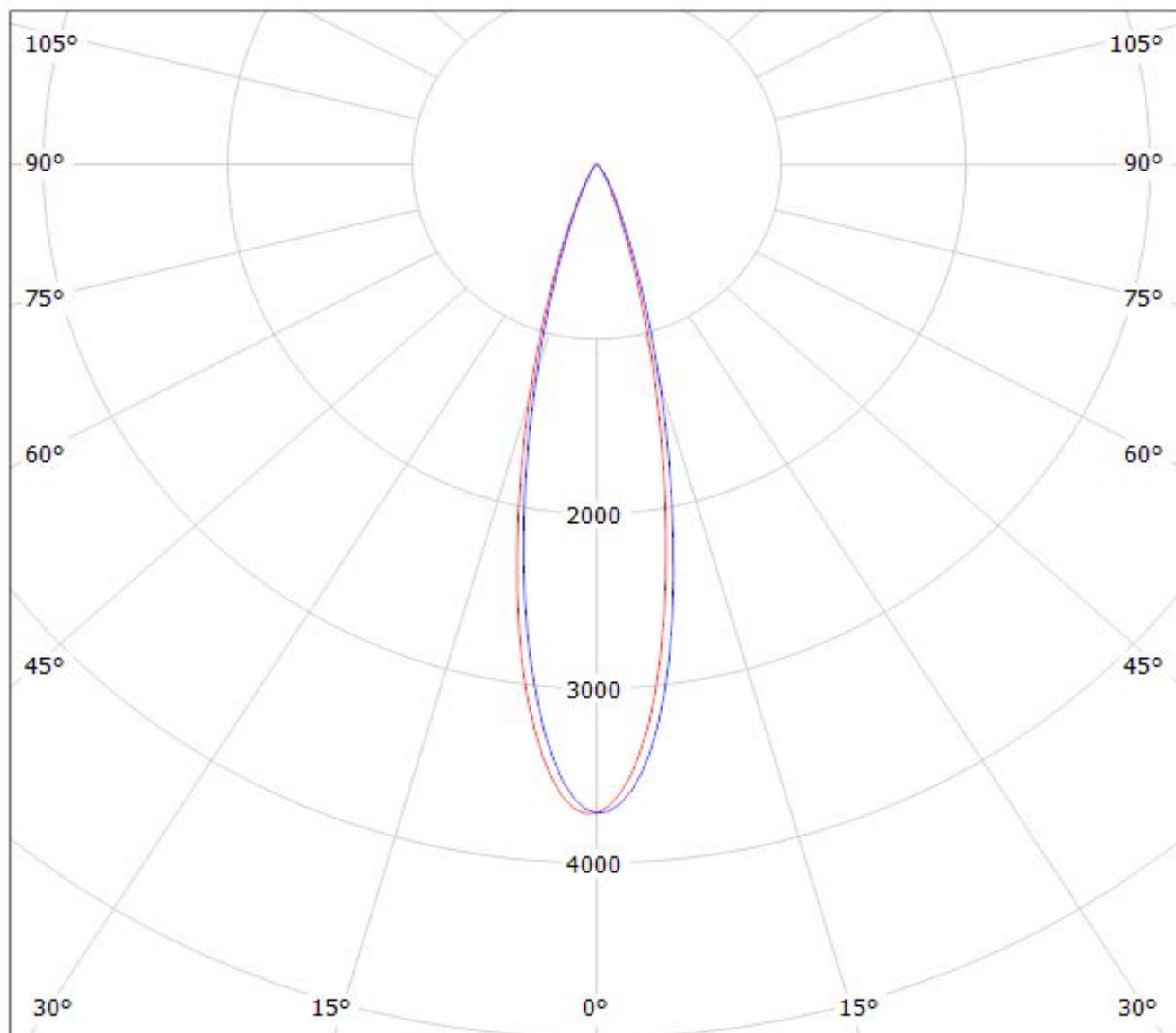
cd/klm

— C0 - C180

— C90 - C270

$\eta = 85\%$

Luminaire: LEDiL Oy C10685_EVA-M Eff.87.9%
Lamps: 1 x Nichia NS9x383 (107.656lm@250mA)



cd/klm

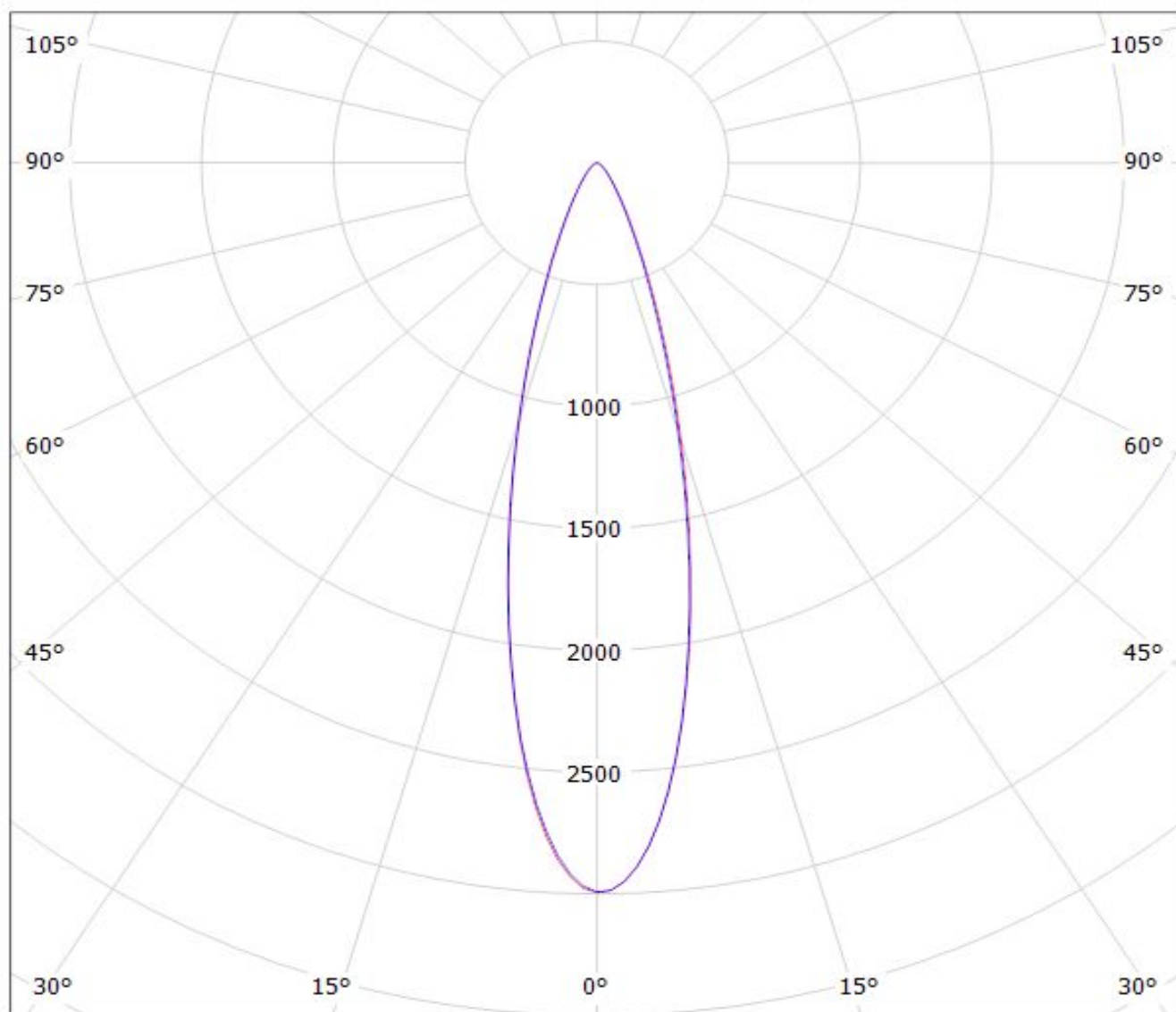
$\eta = 88\%$

— C0 - C180

— C90 - C270

Luminaire: LEDiL Oy C10685_EVA-M (NICHIA_286) Eff.88.4%

Lamps: 1 x NICHIA_286_(NSML286ME) 322.274lm@100mA CCT=3000K P=3.42532W I=100.1mA



cd/klm

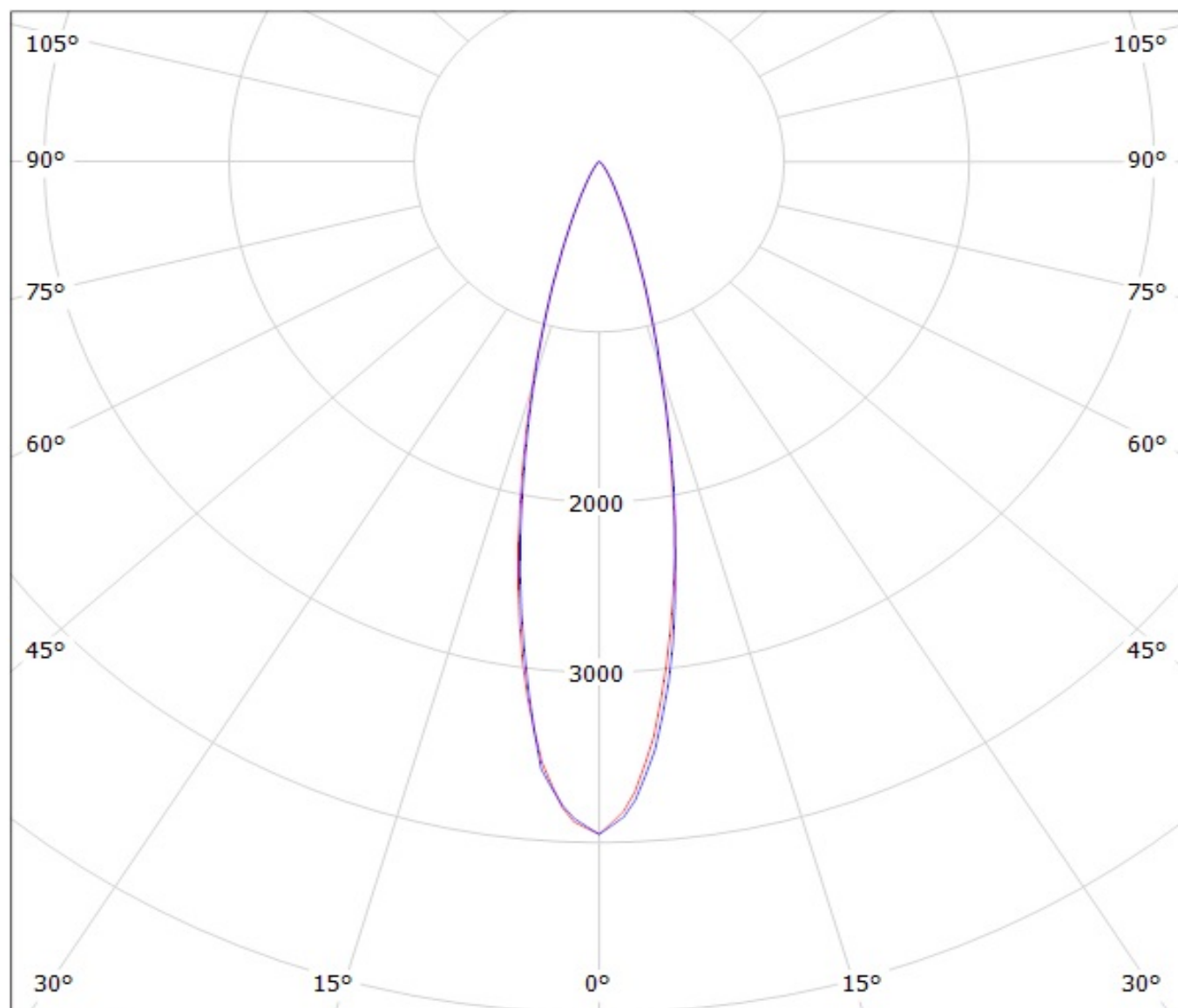
$\eta = 88\%$

— C0 - C180

— C90 - C270

Luminaire: LEDil Oy C10685_EVA-M_(DURIS_S8) Efficiency=86%

Lamps: 1 x Osram DURIS S8 (GW P9LMS1.ĚC) 192lm @ 100mA CCT=2900K P=1.8W I=100mA



cd/klm

— C0 - C180

— C90 - C270

NOTE: The typical divergence will be changed by different color, chip size and chip position tolerance. The typical total divergence is the full angle measured where the luminous intensity is half of the peak value.