

Released

Revisions

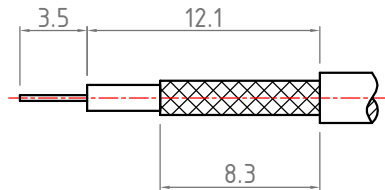
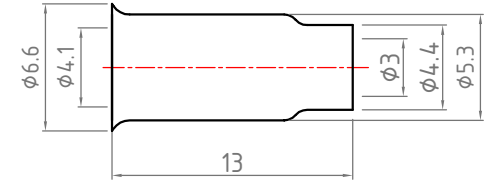
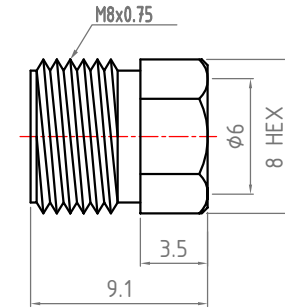
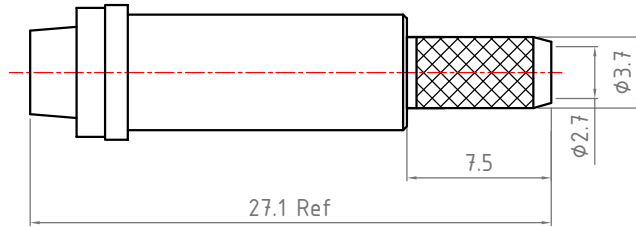
Revisions B, B-1; B-2..... On behalf of Official Drawing
Revisions 1; 2; 3; 4..... On behalf of experiment's Drawing.

ISS	Symbol	Description	Date
B		CHE for New Drawing Frame & New PN System	2006/07/11

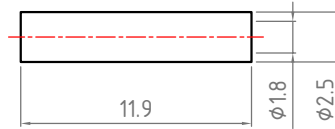
*Change new drawing frame in Blue Color since 2009/07/01 , to comply with Company CIS Policy.

Note :

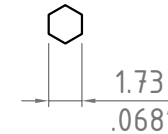
1. Single Crimp: Recommended Dimensions Provided for Ferrule.
Dual Crimp: Recommended Dimensions Provided for Ferrule and Center Pin.
Please Advise Single/Dual in Advance to Avoid Any Inconsistency.
2. All Metal Materials Are in Compliance with RoHS 2 Directive 2011/65/EU Annex III Section 6 Paragraph.
3. Recommended Crimped Hand Tool : **HT-801V**



Recommended Cable Stripping Dimensions



Recommended Crimping Dimensions for Center Pin



Recommended Crimping Dimensions for Ferrule



ITEM	Description	Material	Finish	Part Number	QTY
6					
5	Plastic Tube	Delrin	None		
4	Ferrule	Brass	Nickel		
3	Pin	Brass	Gold		
2	Insulator	Delrin	None		
1	Body	Brass	Nickel		

Scale	Abbr.	Date	Rev.
NTS	ST	2013/12/19	B
Tolerances : .X ±0.2 .XX ±0.1 .XXX ±0.05			
All Dimensions in mm (Unless Otherwise Specified)			
Drawn	Checked	Approved	
Olivia	Ryan	G. Sun	
2013/12/19	2013/12/19	2013/12/19	

Proprietary Note
This document contains information proprietary to S-Conn, which is either copyrighted, or patent applied for, and / or protected by trade secret laws.
This document or parts thereof, may not be used, disclosed or reproduced in any form by any method, or for any purpose, without the written permission of S-Conn, Taiwan.

Customer P/N:

ISO 9001 Certified

DWG. NO. **A204W0N02-M**

TITLE **FME Dual Crimp Jack for RG174 Cable**

S-Conn Enterprise Co., Ltd.