

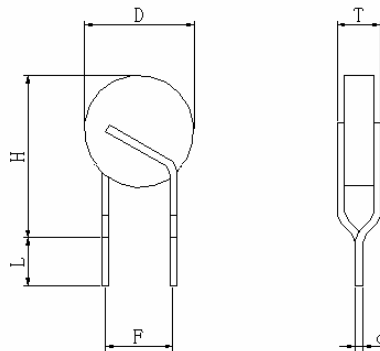
SCB-151-261AXN

Features

- Leaded disks ceramic PTC

Product Dimensions (mm)

Type	D	T	H	L	F		d
	Max	Max	Max	Min	Min	Max	(ϕ)
SCB-151-261AXN	7.0	5.0	9.0	12	4.0	6.0	0.6



Electrical characteristics

No.	Item	Test	
1	R_0	25°C	150±25%
2	I_H	25°C	28mA
3	I_T	25°C	60mA
4	I_{MAX}	25°C	0.2A
5	T_C	25°C	120°C
6	V_{MAX}	265V	$\Delta R \leq 20\%$

I_H = Hold current: max current at which the device will not trip at 25°C still air.

I_T = Trip current: min current at which the device will always trip at 25°C still air.

I_{max} = Max current device can withstand without damage.

V_{max} = Max voltage device can withstand without damage.

T_C = Curie temperature.

Packing

500p/bag or 1500p/reel