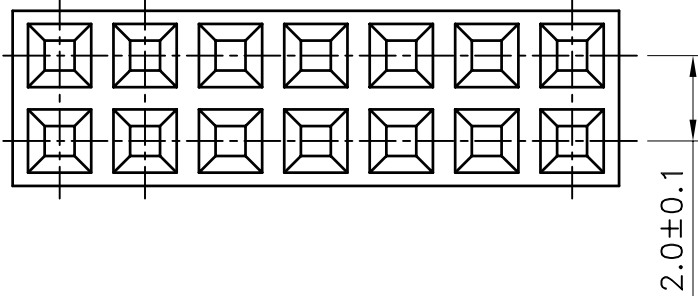
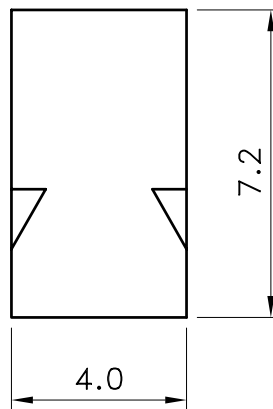
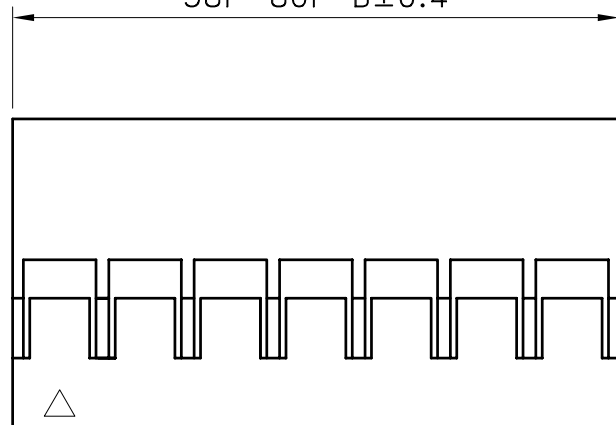


4P-20P A±0.15
 22P-36P A±0.25
 38P-80P A±0.35

2.00 Typ



4P-20P B±0.2
 22P-36P B±0.3
 38P-80P B±0.4



■ SPECIFICATIONS

- Voltage Rating : 250V AC/DC
- Current Rating : 1A AC/DC
- Withstanding Voltage : 1000V AC/minute
- Insulation Resistance : 1000MΩ min
- Temperature Range : - 25°C to + 85°C
- Contact Resistance : 20mΩ max

■ HOUSING

- Part No. : JS-1164-XXx2
- Poles : 2x2 - 40x2
- Material : Nylon 66 UL94V-2
- Q' ty : 1,000 pcs./Bag

Poles	Part No.	Dimensions(mm)		Poles	Part No.	Dimensions(mm)	
		A	B			A	B
4	JS-1164-02x2	2.00	4.20	44	JS-1164-22x2	42.00	44.20
6	JS-1164-03x2	4.00	6.20	46	JS-1164-23x2	44.00	46.20
8	JS-1164-04x2	6.00	8.20	48	JS-1164-24x2	46.00	48.20
10	JS-1164-05x2	8.00	10.20	50	JS-1164-25x2	48.00	50.20
12	JS-1164-06x2	10.00	12.20	52	JS-1164-26x2	50.00	52.20
14	JS-1164-07x2	12.00	14.20	54	JS-1164-27x2	52.00	54.20
16	JS-1164-08x2	14.00	16.20	56	JS-1164-28x2	54.00	56.20
18	JS-1164-09x2	16.00	18.20	58	JS-1164-29x2	56.00	58.20
20	JS-1164-10x2	18.00	20.20	60	JS-1164-30x2	58.00	60.20
22	JS-1164-11x2	20.00	22.20	62	JS-1164-31x2	60.00	62.20
24	JS-1164-12x2	22.00	24.20	64	JS-1164-32x2	62.00	64.20
26	JS-1164-13x2	24.00	26.20	66	JS-1164-33x2	64.00	66.20
28	JS-1164-14x2	26.00	28.20	68	JS-1164-34x2	66.00	68.20
30	JS-1164-15x2	28.00	30.20	70	JS-1164-35x2	68.00	70.20
32	JS-1164-16x2	30.00	32.20	72	JS-1164-36x2	70.00	72.20
34	JS-1164-17x2	32.00	34.20	74	JS-1164-37x2	72.00	74.20
36	JS-1164-18x2	34.00	36.20	76	JS-1164-38x2	74.00	76.20
38	JS-1164-19x2	36.00	38.20	78	JS-1164-39x2	76.00	78.20
40	JS-1164-20x2	38.00	40.20	80	JS-1164-40x2	78.00	80.20
42	JS-1164-21x2	40.00	42.20				



喬訊電子工業股份有限公司
 CHYAO SHIUNN
 ELECTRONIC INDUSTRIAL LTD.

APPROVED BY	SCALE	UNIT	TOLERANCE	LTR	REVISION RECORD	DATE	LTR	REVISION RECORD	DATE
林宗		mm	.0 ±0.3	ECR	RoHS compliant	06/04/01			
CHECKED BY	PROJ	VER NO.	.00 ±0.2	ECR	200808-015	08/08/26			
		a3	.000 ±0.1	ECR	200811-017	08/11/20			
DRAWN BY	DATE	SIZE	ALL ±				CUSTOMER		
黃科源	2008/11/20	A4	ANGLE				Conforms to The RoHS Instruction		
			0° ±						
			±0°						

PART NO JS-1164-XXx2
 2.00mm Center Mini Latch Housing