

IEC inlet filters YB-C Series



- Rated currents up to 10A
额定电流达到10A
 - Single or dual-fuse holder
带单或双保险丝
 - 2-pole rocker switch
双极性跷板开关
 - Optional medical versions((R5) type)
医疗设备专用 (R5) 系列
 - General purpose application
一般性用途
- Approvals(认证):



Technical Data 技术参数

Rated Voltage Max.(最大电压):	250VAC,50/60Hz
Operating frequency(工作频率):	DC to 400Hz
Rated currents(额定电流):	1~10A@40°C
Hipot Rating (耐电压):	L-N 1450VDC L-N 250VDC(with lamp) L/N-G 2000VAC/2250VDC L/N-G 4000VAC(R5 type)
Inrush current(冲击电流):	72A
Protection level(防护等级):	IP40 according to IEC 60529
Climatic category(气候类别):	-25°C~+100°C(25/100/21)
Design corresponding to(设计标准):	UL1283, CSA C22.2 No.8, IEC/EN 60939, CQC GB 15288/GB 15287-2008
Flammability corresponding to(防火等级):	UL 94V-0

Electrical schematic 电路图

Standard type

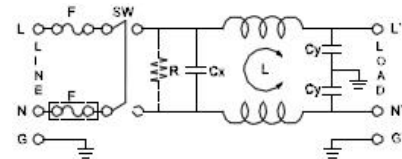


Fig.1

R5 type

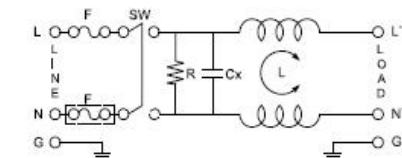


Fig.2

Lg type

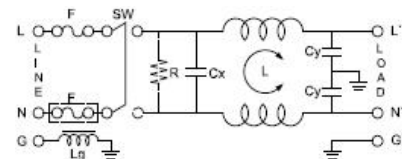


Fig.3

Features 产品特点

The products have high attenuation, based on chokes with high saturation resistance and excellent thermal behavior

--基于线圈抗饱和、优异温升性能，产品有极其优秀的衰减

(R5) types comply with the requirements of IEC/EN60601-1 for safety clearance, leakage current and hipot testing.

--(R5)医疗专用产品依据 IEC/EN60601-1标准对安全间隙，低漏电流和超高耐压要求设计。

There are a variety of parts and combinations to meet different customer's EMC tests

--有多种零件组合搭配，来满足不同客户整机 EMC 测试

Customized products according to customer's requirements

--可按客户要求定制不同规格产品

Typical Applications 应用范围

Portable electrical and electronic equipment

--便携式电器和电子设备

Medical equipment

--医疗设备

Test and measurement equipment

--测量测试设备

Small and medium-sized machines and household equipment

--中小型机械设备和家用设备

Single-phase power supply, switch-mode power supply

--单相电源, 开关电源

Rule of Nomination 命名原则说明




YB 11 C1 - 10A - Q (R 5 G) C1-One Fuse
 : 电路 : 外壳 : : 电流 : : 输出方式 : : : C2-Two Fuse
 Electrical Dimensions Current Output Optional 可选的
 Schematic

Tabulates 产品列表

Model No. 型号	Rated Current @40°C 额定电流	Terminal Options* 输出方式	Bleeder resistor(optional) 泄放电阻R(可选)	接地电感 G(可选)	Leakage current 250V/50Hz漏 电流	Electrical Schematic 电路图	Rated Voltage(V) 额定电压	Operating Frequency(Hz) 工作频率
YB11C1-1A	1A	Q S -	-	-	<0.8mA	Fig.1	115/250V	50/60Hz
YB11C1-2A	2A	Q S -	-	-		Fig.1		
YB11C1-3A	3A	Q S -	-	-		Fig.1		
YB11C1-4A	4A	Q S -	-	-		Fig.1		
YB11C1-6A	6A	Q S -	-	-		Fig.1		
YB11C1-8A	8A	Q S -	-	-		Fig.1		
YB11C1-10A	10A	Q S -	-	-		Fig.1		
YB11C2-1A	1A	Q S -	-	-		Fig.1		
YB11C2-2A	2A	Q S -	-	-		Fig.1		
YB11C2-3A	3A	Q S -	-	-		Fig.1		
YB11C2-4A	4A	Q S -	-	-		Fig.1		
YB11C2-6A	6A	Q S -	-	-		Fig.1		
YB11C2-8A	8A	Q S -	-	-		Fig.1		
YB11C2-10A	10A	Q S -	-	-		Fig.1		

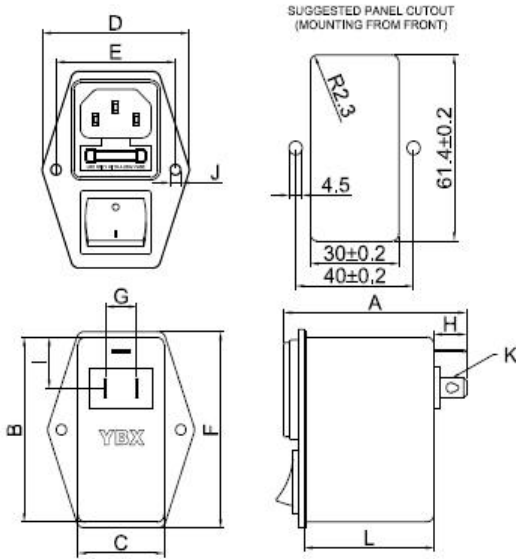
医疗专用产品 Medical Version

Model No. 型号	Rated Current @40°C 额定电流	Terminal Options 输出方式	Bleeder resistor(optional) 泄放电阻R(MΩ)	Medical equipment 医疗专用 5	接地电感 G	Leakage current 250V/50Hz 漏电流	Electrical Schematic 电路图	Rated Voltage(V) 额定电压	Operating Frequency(Hz) 工作频率
YB11C2-1A-x(R5)	1A	Q S -	1	5	-	<5μA	Fig.2	115/250V	50/60Hz
YB11C2-2A-x(R5)	2A	Q S -	1	5	-		Fig.2		
YB11C2-3A-x(R5)	3A	Q S -	1	5	-		Fig.2		
YB11C2-4A-x(R5)	4A	Q S -	1	5	-		Fig.2		
YB11C2-6A-x(R5)	6A	Q S -	1	5	-		Fig.2		
YB11C2-8A-x(R5)	8A	Q S -	1	5	-		Fig.2		
YB11C2-10A-x(R5)	10A	Q S -	1	5	-		Fig.2		

 *Q: Fast-on 6.35x0.8mm  S: solder 4.0x0.8mm  W: UL1015 18awg

Mechanical Dimension外形图(Unit: mm)

C Case



Case	A	B	C	D	E	F	G	H	I	J	K
C1	62	61	29.5	50	40	64.8	11	11	17	3.5	6.3*0.8
C2	62	61	29.5	50	40	64.8	11	11	17	3.5	6.3*0.8
Tolerances 公差	±1	±1	±1	±1	±0.15	±1	±0.5	±0.5	±0.5	±1	±0.15

Insertion loss table(In 50ohm system according IEC/CISPR No.17)插入损耗(50欧姆测试系统, IEC/CISPR No.17)

