

IEC inlet filters YB-C series



- Rated currents up to 10A
额定电流达到10A
- Single or dual-fuse holder
带单或双保险丝
- 2-pole rocker switch
双极性跷板开关
- Optional medical versions((R5) type)
医疗设备专用 (R5) 系列
- Snap-in installation design, simple and quick
卡入式设计, 简单快捷

Approvals(认证):



Technical Data 技术参数

Rated Voltage Max.(最大电压):	250VAC,50/60Hz
Operating frequency(工作频率):	DC to 400Hz
Rated currents(额定电流):	1~10A@40°C
Hipot Rating (耐电压):	L-N 1450VDC
	L-N 250VDC(with lamp)
	L/N-G 2000VAC/2250VDC
	L/N-G 4000VAC(R5 type)
Inrush current(冲击电流):	72A
Protection level(防护等级):	IP40 according to IEC 60529
Climatic category(气候类别)	-25°C~+100°C(25/100/21)
Design corresponding to(设计标准):	UL1283, CSA C22.2 No.8,
	IEC/EN 60939,
	CQC GB 15288/GB 15287-2008
Flammability corresponding to(防火等级):	UL 94V-0

Electrical schematic 电路图

Standard type

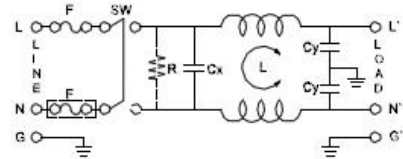


Fig.1

R5 type

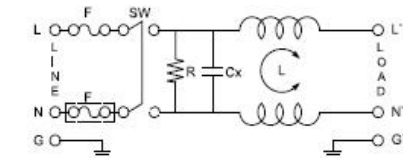


Fig.2

Lg type

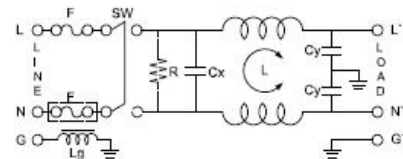


Fig.3

Features 产品特点

The products have high attenuation, based on chokes with high saturation resistance and excellent thermal behavior

--基于线圈抗饱和、优异温升性能, 产品有极其优秀的衰减

(R5) types comply with the requirements of IEC/EN60601-1 for safety clearance, leakage current and hipot testing.

--(R5)医疗专用产品依据 IEC/EN60601-1 标准对安全间隙, 低漏电流和超高耐压要求设计。

There are a variety of parts and combinations to meet different customer's EMC tests

--有多种零件组合搭配, 来满足不同客户整机 EMC 测试

Customized products according to customer's requirements

--可按客户要求定制不同规格产品

Typical Applications 应用范围

Portable electrical and electronic equipment

--便携式电器和电子设备

Medical equipment

--医疗设备

Test and measurement equipment

--测量测试设备

Small and medium-sized machines and household equipment

--中小型机械设备和家用设备

Single-phase power supply,switch-mode power supply

--单相电源,开关电源

Rule of Nomination 命名原则

YB	11	C3	-	10A	-	Q	(R 5 G)	C3/C5/C7: one Fuse
:	电路	:	外壳	:	电流	:	输出方式	C4/C6/C8: Two Fuses
Electrical	Dimensions	Current	Output	Optional	可选的			
Schematic								

Tabulates 产品列表

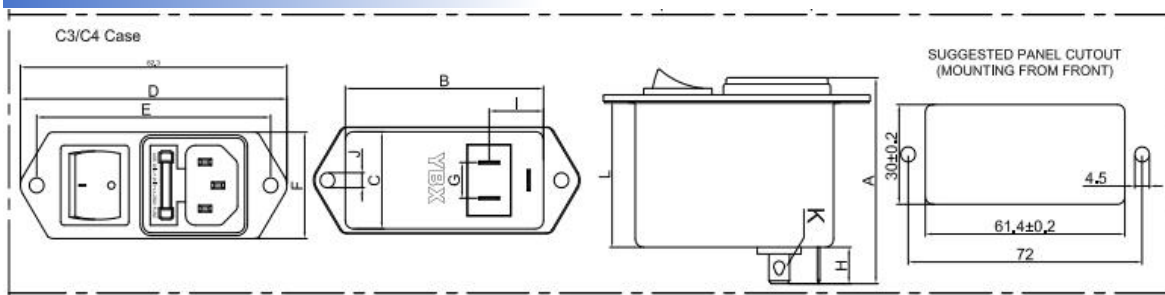
Model No. 型号	Rated Current @40°C 额定电流	Terminal Options* 输出方式			Bleeder resistor(optional) 泄放电阻R(可选)	接地电感 G(可选)	Leakage current 250V/50Hz漏 电流	Electrical Schematic 电路图	Rated Voltage(V) 额定电压	Operating Frequency(Hz) 工作频率
YB11C3-1A	1A	Q	S	-	-	-	<0.8mA	115/250V	50/60Hz	
YB11C3-2A	2A	Q	S	-	-	-				
YB11C3-3A	3A	Q	S	-	-	-				
YB11C3-4A	4A	Q	S	-	-	-				
YB11C3-6A	6A	Q	S	-	-	-				
YB11C3-8A	8A	Q	S	-	-	-				
YB11C3-10A	10A	Q	S	-	-	-				
YB11C4-1A	1A	Q	S	-	-	-				
YB11C4-2A	2A	Q	S	-	-	-				
YB11C4-3A	3A	Q	S	-	-	-				
YB11C4-4A	4A	Q	S	-	-	-				
YB11C4-6A	6A	Q	S	-	-	-				
YB11C4-8A	8A	Q	S	-	-	-				
YB11C4-10A	10A	Q	S	-	-	-				

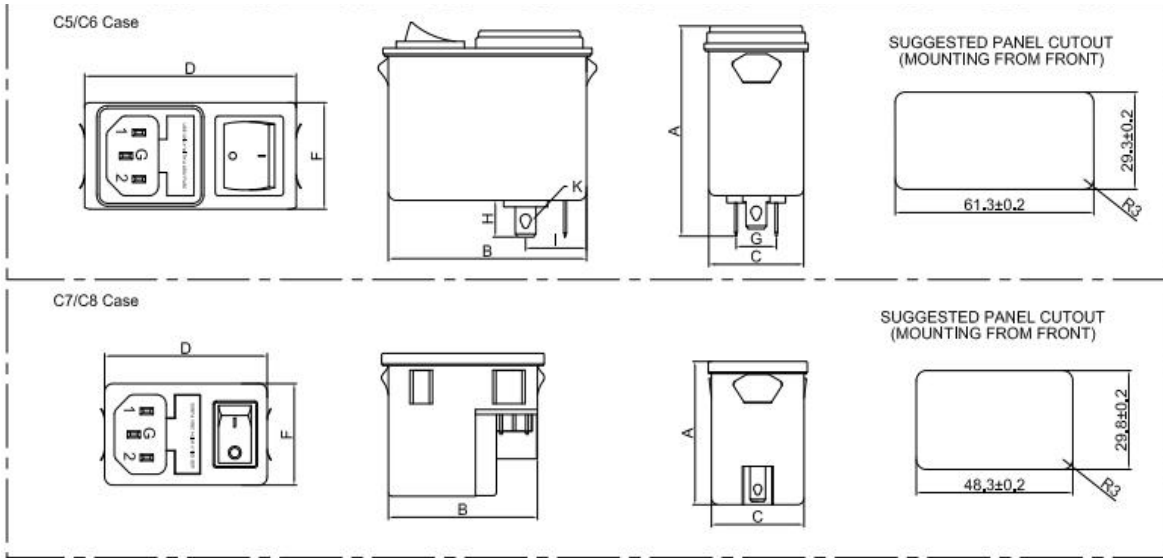
医疗专用产品 Medical Version

Model No. 型号	Rated Current @40°C 额定电流	Terminal Options 输出方式			Bleeder resistor(optional) 泄放电阻R(MΩ)	Medical equipment 医疗专用 5	接地电感 G	Leakage current 250V/50Hz 漏电流	Electrical Schematic 电路图	Rated Voltage(V) 额定电压	Operating Frequency(Hz) 工作频率
YB11C4-1A-x(R5)	1A	Q	S	-	1	5	-	<5μA	115/250V	50/60Hz	
YB11C4-2A-x(R5)	2A	Q	S	-	1	5	-				
YB11C4-3A-x(R5)	3A	Q	S	-	1	5	-				
YB11C4-4A-x(R5)	4A	Q	S	-	1	5	-				
YB11C4-6A-x(R5)	6A	Q	S	-	1	5	-				
YB11C4-8A-x(R5)	8A	Q	S	-	1	5	-				
YB11C4-10A-x(R5)	10A	Q	S	-	1	5	-				

*Q: Fast-on 6.35x0.8mm S: solder 4.0x0.8mm W: UL1015 18awg

Mechanical Dimension 外形图(Unit: mm)





Case	A	B	C	D	E	F	G	H	I	J	K
C3/C4	62	61	29.5	80	72	34.7	11	11	17	3.5	6.3*0.8
C5/C6	62	61	29	65.5		32	11	11	19		6.3*0.8
C7/C8	43.5	48	29.5	50		30					6.3*0.8
Tolerances 公差	±1	±1	±1	±1	±0.15	±1	±0.5	±0.5	±0.5	±1	±0.15

Insertion loss table(In 50ohm system according IEC/CISPR No.17)插入损耗

————— 共模(common mode) - - - - - 差模(differential mode)

