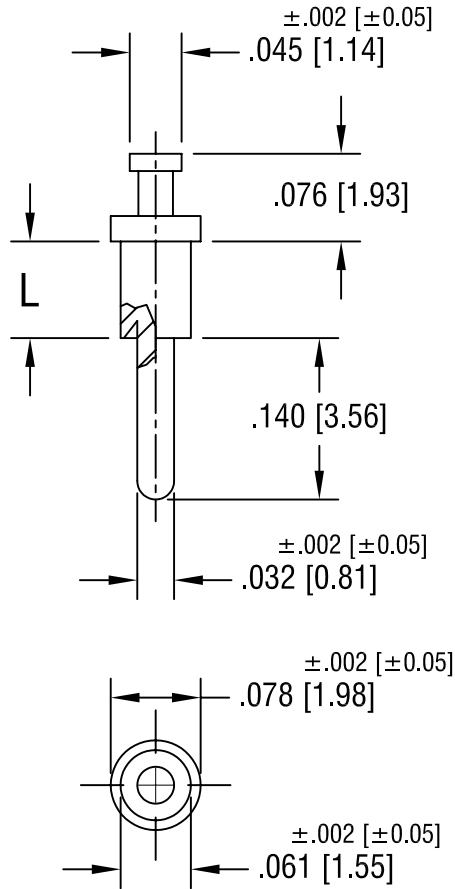


THIS DOCUMENT IS THE PROPERTY OF  
KEYSTONE ELECTRONICS CORP. AND  
SHALL NOT BE REPRODUCED, DISTRIBUTED  
OR USED AS A BASIS FOR MANUFACTURE  
WITHOUT PRIOR WRITTEN PERMISSION  
FROM KEYSTONE ELECTRONICS CORP.



PART NO.	'L' DIM.
1633-1	.054 [1.37]
1633-2	.084 [2.13]
1633-3	.115 [2.92]
1633-4	.147 [3.73]

			<b>KEYSTONE ELECTRONICS CORP.</b>		
			ASTORIA, N.Y. 11105-2017		
PART NAME			TERMINAL		
MATERIAL			BRASS		
FINISH			TIN PLATE		
			DRN BY	BOONE	DATE
			APPD	LN	SCALE
			CODE	DWG NO.	
				<b>1633-</b>	
1.24.00	CHANGE AS PER ECN 00-008	B			
8.23.93	REVISED	A			
DATE	DESCRIPTION	REV.	TOLERANCES	INCH	[MM]
			DECIMAL	$\pm .005$	[ $\pm 0.15$ ]
			ANGULAR	$\pm 1^\circ$	
			UNLESS OTHERWISE SPECIFIED		
			C/M		