

HEKLA-RZ-LENS

Colour mixing sublens for HEKLA-SOCKETS and HEKLA-G2 connectors

SPECIFICATION:

| | |
|----------------|-----------|
| Dimensions | Ø 33.6 mm |
| Height | 2.9 mm |
| Fastening | socket |
| ROHS compliant | yes ⓘ |

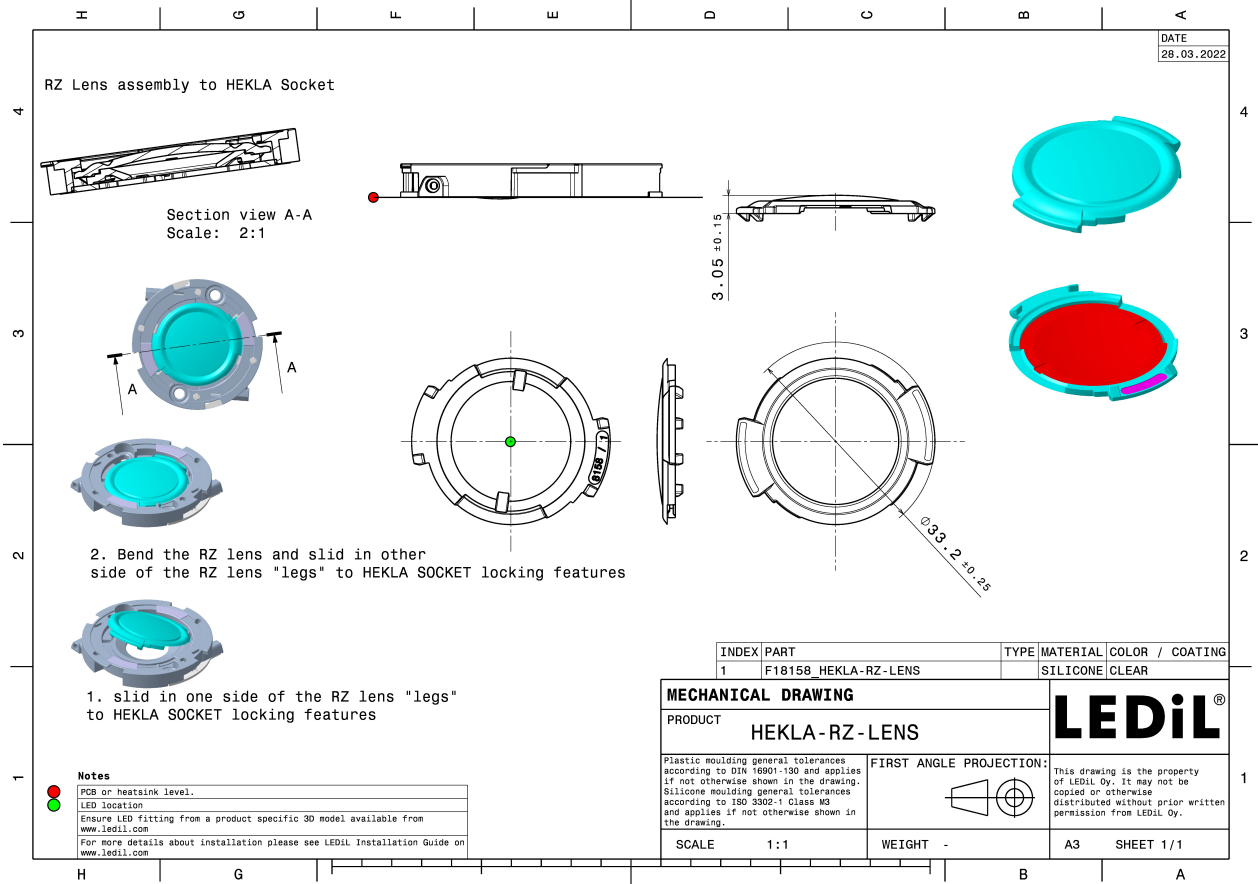
MATERIALS:

| Component | Type | Material | Colour | Finish |
|---------------|-----------|----------|--------|--------|
| HEKLA-RZ-LENS | Accessory | Silicone | clear | |

ORDERING INFORMATION:

| Component | Qty in box | MOQ | MPQ | Box weight (kg) |
|--|------------|-----|-----|-----------------|
| F18158_HEKLA-RZ-LENS » Box size: 398 x 298 x 140 mm | 3150 | 45 | 45 | 2.7 |





See also our general installation guide: www.ledil.com/installation_guide

AVAILABLE LEDiL PRODUCTS:

| Product name | Description |
|-------------------------------|--|
| F14988_HEKLA-SOCKET-E | Version compatible with COBs of 15.8 x 15.8 mm packages and max 14.3 mm LES size |
| FP15072_ZORYA-SC-C | ~340° omnidirectional decorative beam. Assembly with HEKLA adapter. |
| F15253_HEKLA-SOCKET-A | Version compatible with COBs of 12.5 x 12.5 mm packages and max 9 mm LES size |
| CP17408_YASMEEN-70-S-C | ~15° spot beam. Assembly with holder C compatible with LEDiL HEKLA. Black version. |
| CP17412_YASMEEN-70-M-C | ~26° wide beam. Assembly with holder C compatible with LEDiL HEKLA. Black version. |
| CP17415_YASMEEN-70-W-C | ~36° wide beam. Assembly with holder C compatible with LEDiL HEKLA. Black version. |
| CP17416_YASMEEN-70-WW-C | ~60° wide beam. Assembly with holder C compatible with LEDiL HEKLA. Black version. |
| CP17572_YASMEEN-70-S-C-WHT | ~15° spot beam. Assembly with holder C compatible with LEDiL HEKLA. White version. |
| CP17573_YASMEEN-70-M-C-WHT | ~26° spot beam. Assembly with holder C compatible with LEDiL HEKLA. White version. |
| CP17574_YASMEEN-70-W-C-WHT | ~36° wide beam. Assembly with holder C compatible with LEDiL HEKLA. White version. |
| CP17575_YASMEEN-70-WW-C-WHT | ~60° wide beam. Assembly with holder C compatible with LEDiL HEKLA. White version. |
| CP17690_AMY-50-M-C | ~24° medium beam. Assembly with holder C compatible with LEDiL HEKLA. Black version. |
| CP17691_AMY-50-W-C | ~36° wide beam. Assembly with holder C compatible with LEDiL HEKLA. Black version. |
| CP17692_AMY-50-WW-C | ~60° wide beam. Assembly with holder C compatible with LEDiL HEKLA. Black version. |
| CN17743_YASMEEN-70-ZOOM-C | |
| CP17782_AMY-70-S-C | ~18° spot beam. Assembly with holder C compatible with LEDiL HEKLA. Black version. |
| CP17783_AMY-70-M-C | ~24° medium beam. Assembly with holder C compatible with LEDiL HEKLA. Black version. |
| CN17949_YASMEEN-70-ZOOM-C-WHT | Infinitely adjustable beam from 16 to 41 degrees. Assembly with holder C compatible with LEDiL HEKLA. White version. |

AVAILABLE LEDiL PRODUCTS:

| Product name | Description |
|------------------------------|--|
| CP18041_AMY-50-S2-C | ~15° spot beam with soft cutoff. Assembly with holder C compatible with LEDiL HEKLA. Black version. |
| CP18442_AMY-50-WAS-C | |
| CP18492_AMY-70-O-C | ~25 + 60° oval beam. Assembly with holder C compatible with LEDiL HEKLA. Black version. |
| CP18494_AMY-50-O-C | ~20 + 50° oval beam. Assembly with holder C compatible with LEDiL HEKLA. Black version. |
| CP18557_AMY-110-S-C | ~18° spot beam. Assembly with holder C compatible with LEDiL HEKLA. Black version. |
| CP18562_AMY-70-RS-C | ~13° spot beam with tight cutoff. Assembly with holder C compatible with LEDiL HEKLA. Black version. |
| CP18572_AMY-110-M-C | ~24° medium beam. Assembly with holder C compatible with LEDiL HEKLA. Black version. |
| CP18573_AMY-110-W-C | ~36° wide beam. Assembly with holder C compatible with LEDiL HEKLA. Black version. |
| CP18574_AMY-110-WW-C | ~60° wide beam. Assembly with holder C compatible with LEDiL HEKLA. Black version. |
| CN18621_AMY-70-ZOOM-C | Infinitely adjustable beam from 20 to 50 degrees. Assembly with holder C compatible with LEDiL HEKLA. Black version. |
| CP18643_AMY-50-RS-C | ~15° spot beam with tight cutoff. Assembly with holder C compatible with LEDiL HEKLA. Black version. |
| CN18649_AMY-50-ZOOM-C | Infinitely adjustable beam from 20 to 50 degrees. Assembly with holder C compatible with LEDiL HEKLA. Black version. |
| CP18767_YASMEEN-70-RS-C2 | ~10° spot beam with tight cutoff. Assembly with holder C compatible with LEDiL HEKLA. Black version. |
| CP18781_YASMEEN-70-RS-C2-WHT | ~10° spot beam with tight cutoff. Assembly with holder C compatible with LEDiL HEKLA. White version. |
| CN18895_ADELY-50-S | ~15° spot beam |
| CN18896_ADELY-50-M | ~24° medium beam |
| CN18897_ADELY-50-W | ~36° wide beam |
| CN18898_ADELY-50-WW | ~50° wide beam |
| CN18920_ADELY-70-S | ~15° spot beam |
| CN18921_ADELY-70-M | ~24° medium beam |
| CN18922_ADELY-70-W | ~36° wide beam |

CP19026_AMY-F110-S-C-WHT

~18° spot beam. Assembly with holder C compatible with LEDiL HEKLA. White version.

AVAILABLE LEDiL PRODUCTS:

| Product name | Description |
|--------------------------|---|
| CP19030_AMY-110-W-C-WHT | ~36° wide beam. Assembly with holder C compatible with LEDiL HEKLA. White version. |
| CP19031_AMY-110-WW-C-WHT | ~60° wide beam. Assembly with holder C compatible with LEDiL HEKLA. White version. |
| MBO19199_YASMEEN-70-S | ~15° spot beam |
| MBO19227_YASMEEN-70-WWW | ~80° wide beam. Assembly with holder C (LEDiL HEKLA) and B (BJB and B+W). Black and white versions. |
| MBO19228_YASMEEN-70-RS | ~10° spot beam |
| MBO19229_YASMEEN-70-ZOOM | Infinitely adjustable beam from 15 to 45 degrees |
| MBO19254_YASMEEN-50-S | ~15° spot beam |
| MBO19255_YASMEEN-50-M | ~26° medium beam |
| MBO19256_YASMEEN-50-W | ~36° wide beam |
| MBO19257_YASMEEN-50-WW | ~60° wide beam |
| MBO19258_YASMEEN-50-ZOOM | Infinitely adjustable beam from 15 to 45 degrees |
| MBO19263_AMY-110-S | ~18° spot beam |
| MBO19264_AMY-110-M | ~24° medium beam |
| MBO19265_AMY-110-W | ~36° wide beam |
| MBO19266_AMY-110-WW | ~60° wide beam |
| MBO19267_AMY-70-S | ~18° spot beam |
| MBO19268_AMY-70-M | ~24° medium beam |
| MBO19269_AMY-70-W | ~36° wide beam |
| MBO19270_AMY-70-WW | ~60° wide beam |
| MBO19271_AMY-70-O | ~25 + 60° oval beam |
| MBO19272_AMY-70-RS | ~13° spot beam with tight cutoff |
| MBO19273_AMY-70-WAS | Asymmetric beam for wall washing |
| MBO19274_AMY-70-ZOOM | Infinitely adjustable beam from 20 to 50 degrees |
| MBO19275_AMY-50-S2 | ~15° spot beam with soft cutoff |
| MBO19276_AMY-50-S | ~18° spot beam |
| MBO19277_AMY-50-M | ~24° medium beam |
| MBO19278_AMY-50-W | ~36° wide beam |
| MBO19279_AMY-50-WW | ~60° wide beam |

| | |
|----------------------|--|
| MBO19281_AMY-50-RS | ~15° spot beam with tight cutoff |
| MBO19282_AMY-50-ZOOM | Infinitely adjustable beam from 20 to 50 degrees |
| MBO19283_AMY-50-WAS | Asymmetric beam for wall washing |

GENERAL INFORMATION:

NOTE: The typical beam angle will be changed by different color, chip size and chip position tolerance. The typical total beam angle is the full angle measured where the luminous intensity is half of the peak value.

MATERIALS:

As part of our continuous research and improvement processes, and to ensure the best possible quality and availability of our products, LEDiL reserves the right to change material grades without notice.

PRODUCT DATA USER AGREEMENT AND DISCLAIMER:

The measured data in the provided downloadable LEDiL Product Datasheets and Mechanical 2D-Drawings is rounded and provided as reference for planning. LEDiL Oy's optical specifications have been verified by conducting performance testing of the products in accordance with the company's quality system. The reported data are averaged results of multiple measurements with typical variation. LEDiL Oy reserves the right to without prior notification make changes and improvements to its products.

LEDiL Oy assumes neither warranty, nor guarantee nor any other liability of any kind for the contents and correctness of the provided data. The provided data has been generated with highest diligence but the provided data may in reality not represent the complete possible variation range of all intrinsic parameters. Therefore, in certain cases a deviation from the provided data could occur.

LEDiL Oy reserves the right to undertake technical changes of its products without further notification which could lead to changes in the provided data. LEDiL Oy assumes no liability of any kind for the possible deviation from any provided data or any other damage resulting from the usage of the provided data.

The user agrees to this disclaimer and user agreement with the download or usage of the provided files.

LEDiL Oy

Joensuunkatu 13
FI-24240 SALO
Finland

LEDiL Inc.

228 West Page Street
Suite D
Sycamore IL 60178
USA

Ledil Optics Technology (Shenzhen) Co., Ltd.

405 , Block B
Casic Motor Building
Shenzhen 518057
P.R.CHINA

Local sales and technical support

[www.ledil.com/
where_to_buy](http://www.ledil.com/where_to_buy)

Shipping locations

Salo, Finland
Hong Kong, China

Distribution Partners

[www.ledil.com/
where_to_buy](http://www.ledil.com/where_to_buy)