

DAISY-7X1-O-D

~25 + 70° oval beam. Variant with diffused lenses.

SPECIFICATION:

Dimensions	279.5 x 39.6
Height	20.3 mm
Fastening	pin, screw, clips
ROHS compliant	yes ⓘ



MATERIALS:

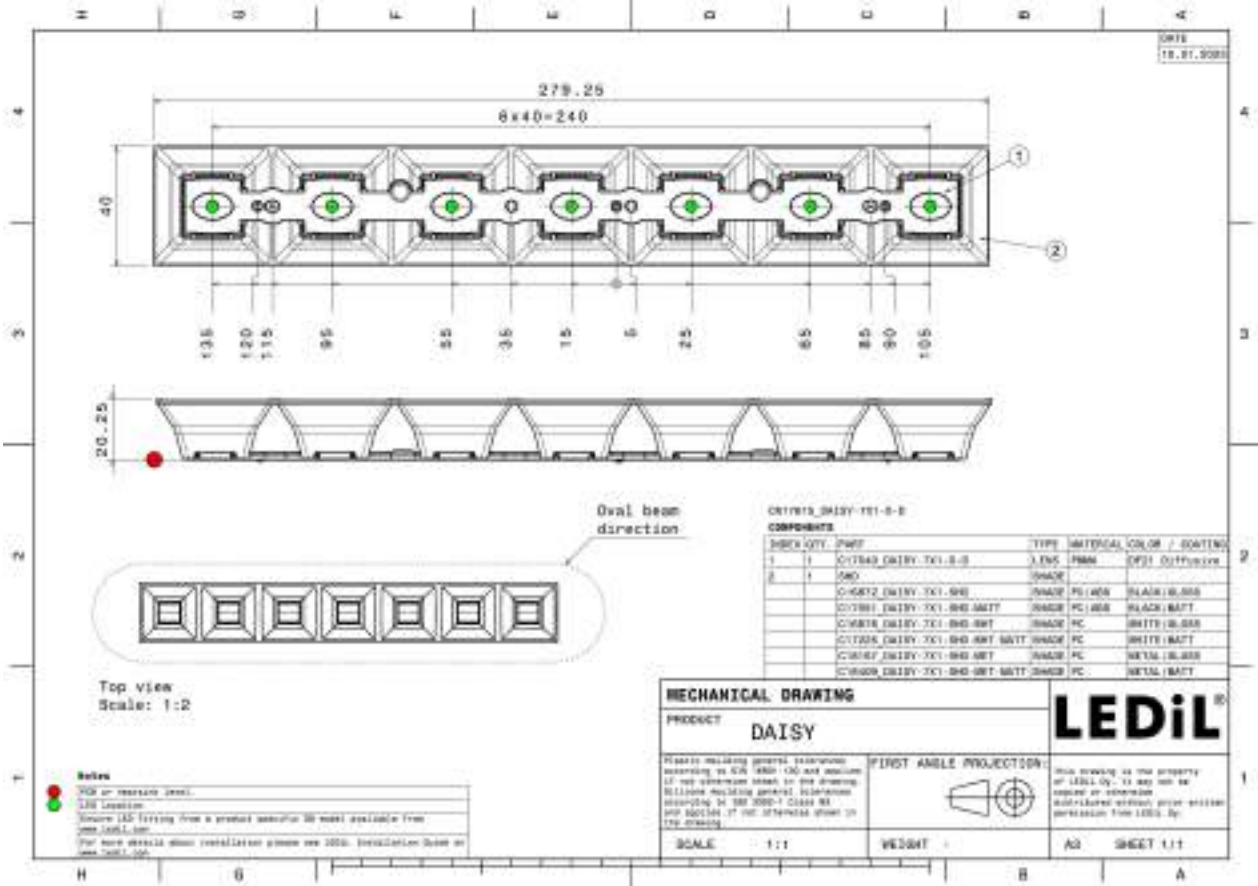
Component	Type	Material	Colour	Finish	Length
C17540_DAISY-7X1-O-D	Linear lens	PMMA	milky		19.0
C18409_DAISY-7X1-SHD-MET-MATT	Shade	PC	metal	matt	279.5
C18167_DAISY-7X1-SHD-MET	Shade	PC	metal	gloss	
C17225_DAISY-7X1-SHD-WHT-MATT	Shade	PC	white	matt	279.5
C17051_DAISY-7X1-SHD-MATT	Shade	PC	black	matt	279.5
C16876_DAISY-7X1-SHD-WHT	Shade	PC	white	gloss	279.5
C16872_DAISY-7X1-SHD	Shade	PC	black	gloss	

ORDERING INFORMATION:

Quantities for one set:

Linear lens	1
Shade	1

Component		Qty in box	MOQ	MPQ	Box weight (kg)
C17540_DAISY-7X1-O-D » Box size: 400 x 300 x 300 mm	Linear lens	312	312	24	7.0
C16876_DAISY-7X1-SHD-WHT » Box size: 595 x 360 x 230 mm	Shade	156	312	24	7.6
C18167_DAISY-7X1-SHD-MET » Box size: 595 x 360 x 230 mm	Shade	156	312	24	7.0
C17051_DAISY-7X1-SHD-MATT » Box size: 595 x 360 x 230 mm	Shade	156	312	24	7.3
C18409_DAISY-7X1-SHD-MET-MATT » Box size: 595 x 360 x 230 mm	Shade	156	312	24	7.0
C17225_DAISY-7X1-SHD-WHT-MATT » Box size: 595 x 360 x 230 mm	Shade	156	312	24	7.6
C16872_DAISY-7X1-SHD » Box size: 595 x 360 x 230 mm	Shade	156	312	24	7.1



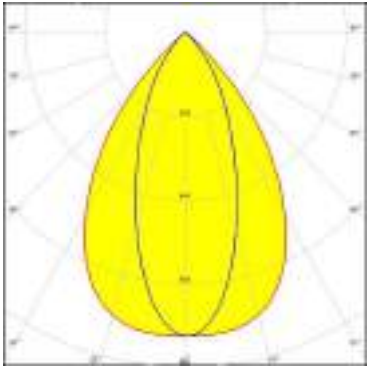


See also our general installation guide: www.ledil.com/installation_guide

OPTICAL RESULTS (MEASURED):

 <p>LED LED Line SMD L28W2 TW Module 20mm 2800Lm Daisy 7</p> <p>FWHM / FWTM 73.0 + 40.0° / 97.0 + 81.0°</p> <p>Efficiency 64 %</p> <p>Peak intensity 0.7 cd/lm</p> <p>LEDs/each optic 2</p> <p>Light colour/type Tunable White</p> <p>Required components: C17051_DAISY-7X1-SHD-MATT</p>		
<p>Light distribution files</p>		

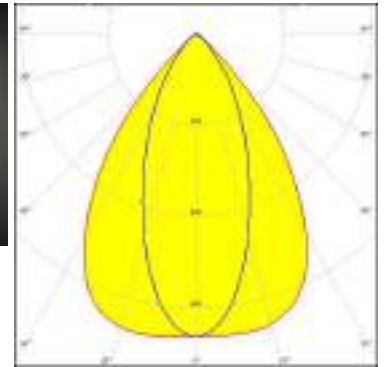
 <p>LED LED Line SMD L28W2 White Module 20mm 2800Lm Daisy 7</p> <p>FWHM / FWTM 72.0 + 40.0° / 97.0 + 80.0°</p> <p>Efficiency 64 %</p> <p>Peak intensity 0.7 cd/lm</p> <p>LEDs/each optic 2</p> <p>Light colour/type White</p> <p>Required components: C17051_DAISY-7X1-SHD-MATT</p>		
<p>Light distribution files</p>		

 <p>LED LUXEON HL2Z</p> <p>FWHM / FWTM 72.0 + 40.0° / 97.0 + 81.0°</p> <p>Efficiency 66 %</p> <p>Peak intensity 0.7 cd/lm</p> <p>LEDs/each optic 2</p> <p>Light colour/type White</p> <p>Required components: C17051_DAISY-7X1-SHD-MATT</p>		
<p>Light distribution files</p>		

OPTICAL RESULTS (MEASURED):



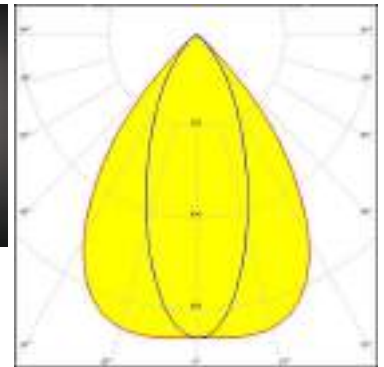
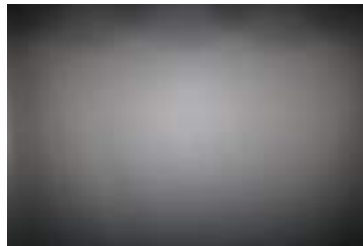
LED LinLED 280x28mm 1600lm 840 4C 21V DAISY 7x1(ZT25)
FWHM / FWTM 75.0 + 43.0° / 97.0 + 83.0°
Efficiency 66 %
Peak intensity 0.7 cd/lm
LEDs/each optic 1
Light colour/type White
Required components:
C16872_DAISSY-7X1-SHD



Light distribution files



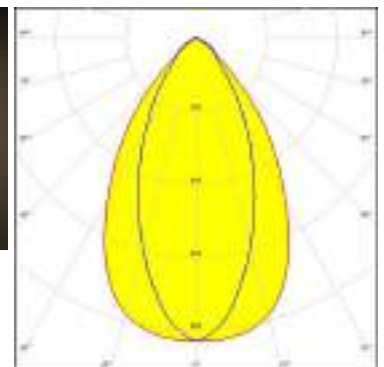
LED NCSxE17A
FWHM / FWTM 75.0 + 41.0° / 96.0 + 82.0°
Efficiency 64 %
Peak intensity 0.7 cd/lm
LEDs/each optic 1
Light colour/type White
Required components:
C17051_DAISSY-7X1-SHD-MATT



Light distribution files



LED LH231B
FWHM / FWTM 68.0 + 47.0° / 100.0 + 93.0°
Efficiency 86 %
Peak intensity 0.8 cd/lm
LEDs/each optic 2
Light colour/type White
Required components:
C18167_DAISSY-7X1-SHD-MET

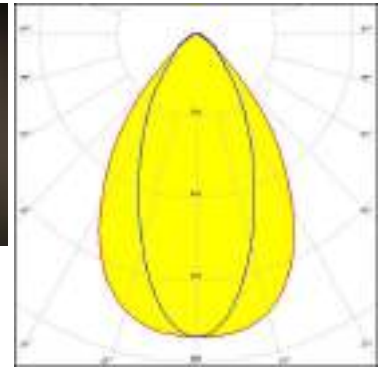


Light distribution files

OPTICAL RESULTS (MEASURED):

SAMSUNG

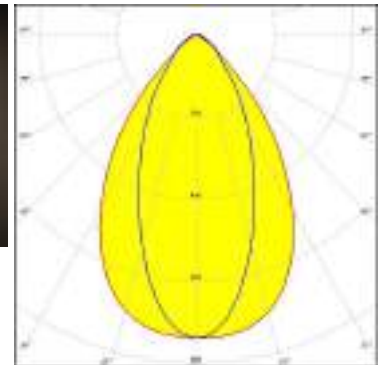
LED LH231B
FWHM / FWTM 72.0 + 47.0° / 104.0 + 100.0°
Efficiency 85 %
Peak intensity 0.7 cd/lm
LEDs/each optic 2
Light colour/type White
Required components:
C16876_DAISSY-7X1-SHD-WHT



Light distribution files

SAMSUNG

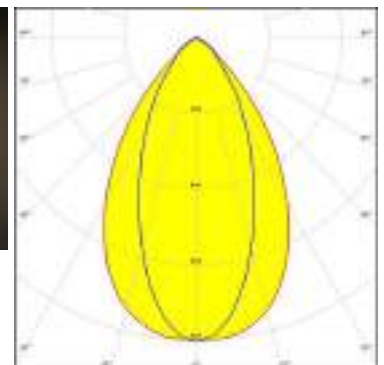
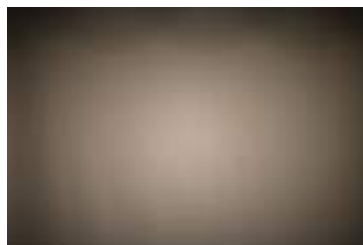
LED LH231B
FWHM / FWTM 72.0 + 46.0° / 104.0 + 100.0°
Efficiency 86 %
Peak intensity 0.7 cd/lm
LEDs/each optic 2
Light colour/type White
Required components:
C17225_DAISSY-7X1-SHD-WHT-MATT



Light distribution files

SAMSUNG

LED LH231B
FWHM / FWTM 69.0 + 46.0° / 101.0 + 94.0°
Efficiency 84 %
Peak intensity 0.8 cd/lm
LEDs/each optic 2
Light colour/type White
Required components:
C17533_DAISSY-7X1-SHD-MET-MATT

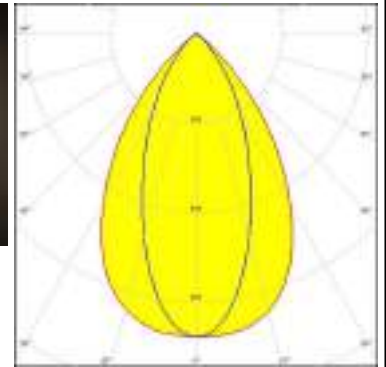
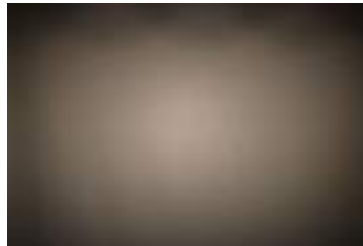


Light distribution files

OPTICAL RESULTS (MEASURED):

SAMSUNG

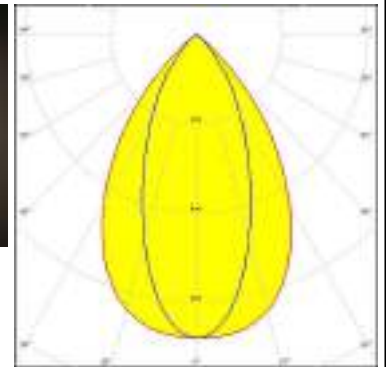
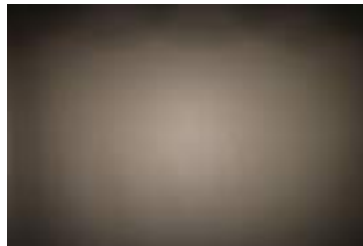
LED LH231B
FWHM / FWTM 70.0 + 43.0° / 99.0 + 84.0°
Efficiency 65 %
Peak intensity 0.7 cd/lm
LEDs/each optic 2
Light colour/type White
Required components:
C16872_DAISSY-7X1-SHD



Light distribution files

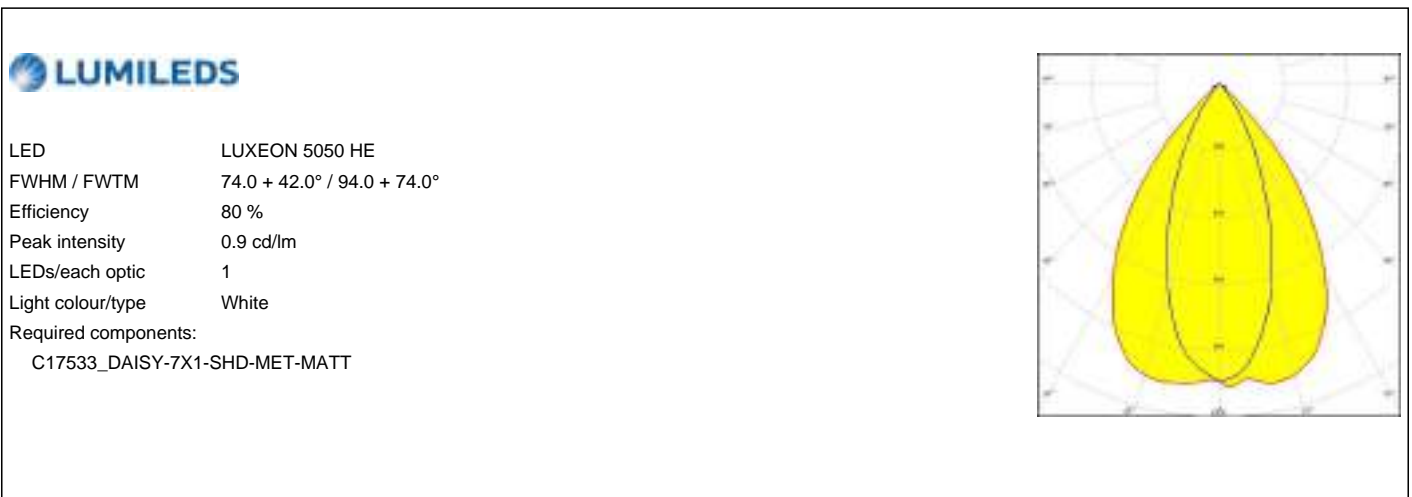
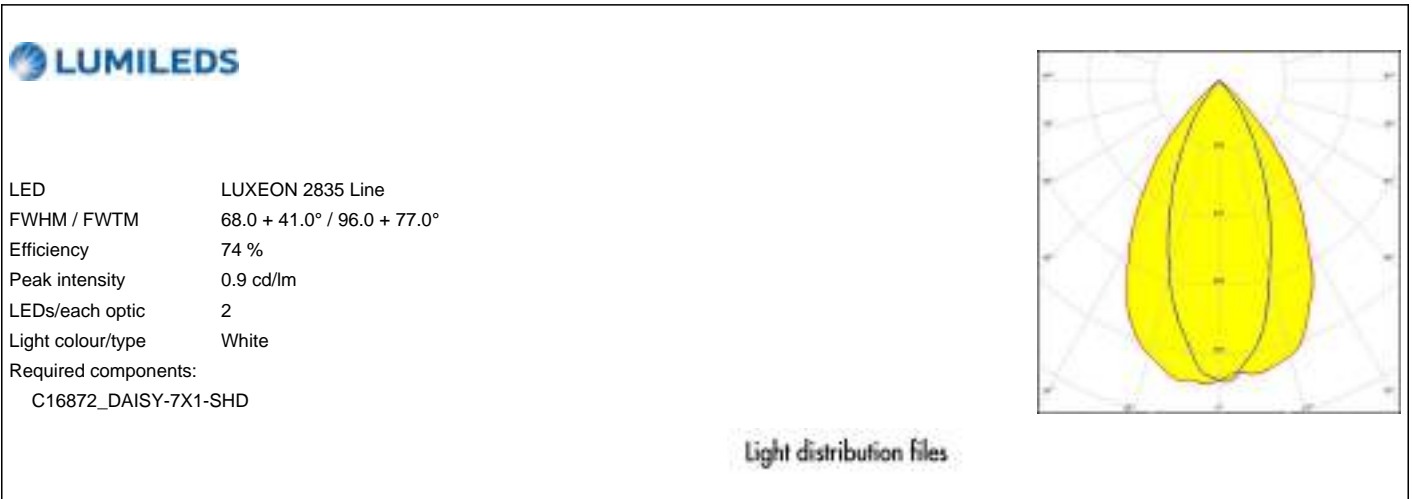
SAMSUNG

LED LH231B
FWHM / FWTM 70.0 + 43.0° / 99.0 + 83.0°
Efficiency 65 %
Peak intensity 0.7 cd/lm
LEDs/each optic 2
Light colour/type White
Required components:
C17051_DAISSY-7X1-SHD-MATT



Light distribution files

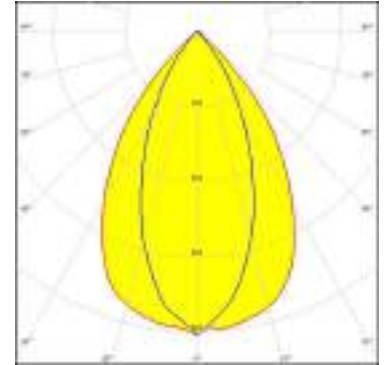
OPTICAL RESULTS (SIMULATED):



OPTICAL RESULTS (SIMULATED):

SAMSUNG

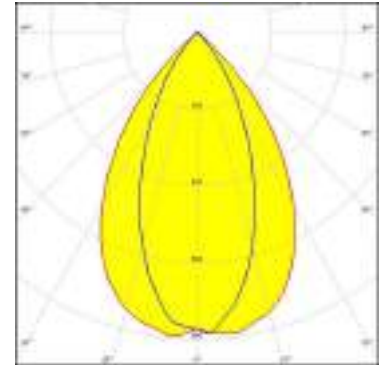
LED LM28xB Series
FWHM / FWTM 70.0 + 44.0° / 96.0 + 80.0°
Efficiency 74 %
Peak intensity 0.8 cd/lm
LEDs/each optic 2
Light colour/type White
Required components:
C16872_DAISSY-7X1-SHD



Light distribution files

SAMSUNG

LED LM28xB Series
FWHM / FWTM 71.0 + 46.0° / 96.0 + 80.0°
Efficiency 74 %
Peak intensity 0.8 cd/lm
LEDs/each optic 2
Light colour/type White
Required components:
C17051_DAISSY-7X1-SHD-MATT



Light distribution files

GENERAL INFORMATION:

NOTE: The typical beam angle will be changed by different color, chip size and chip position tolerance. The typical total beam angle is the full angle measured where the luminous intensity is half of the peak value.

MATERIALS:

As part of our continuous research and improvement processes, and to ensure the best possible quality and availability of our products, LEDiL reserves the right to change material grades without notice.

PRODUCT DATA USER AGREEMENT AND DISCLAIMER:

The measured data in the provided downloadable LEDiL Product Datasheets and Mechanical 2D-Drawings is rounded and provided as reference for planning. LEDiL Oy's optical specifications have been verified by conducting performance testing of the products in accordance with the company's quality system. The reported data are averaged results of multiple measurements with typical variation. LEDiL Oy reserves the right to without prior notification make changes and improvements to its products.

LEDiL Oy assumes neither warranty, nor guarantee nor any other liability of any kind for the contents and correctness of the provided data. The provided data has been generated with highest diligence but the provided data may in reality not represent the complete possible variation range of all intrinsic parameters. Therefore, in certain cases a deviation from the provided data could occur.

LEDiL Oy reserves the right to undertake technical changes of its products without further notification which could lead to changes in the provided data. LEDiL Oy assumes no liability of any kind for the possible deviation from any provided data or any other damage resulting from the usage of the provided data.

The user agrees to this disclaimer and user agreement with the download or usage of the provided files.

LEDiL Oy

Joensuunkatu 13
FI-24240 SALO
Finland

LEDiL Inc.

228 West Page Street
Suite D
Sycamore IL 60178
USA

Ledil Optics Technology (Shenzhen) Co., Ltd.

405 , Block B
Casic Motor Building
Shenzhen 518057
P.R.CHINA

Local sales and technical support

[www.ledil.com/
where_to_buy](http://www.ledil.com/where_to_buy)

Shipping locations

Salo, Finland
Hong Kong, China

Distribution Partners

[www.ledil.com/
where_to_buy](http://www.ledil.com/where_to_buy)