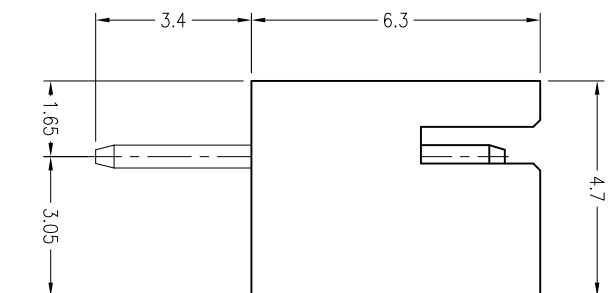
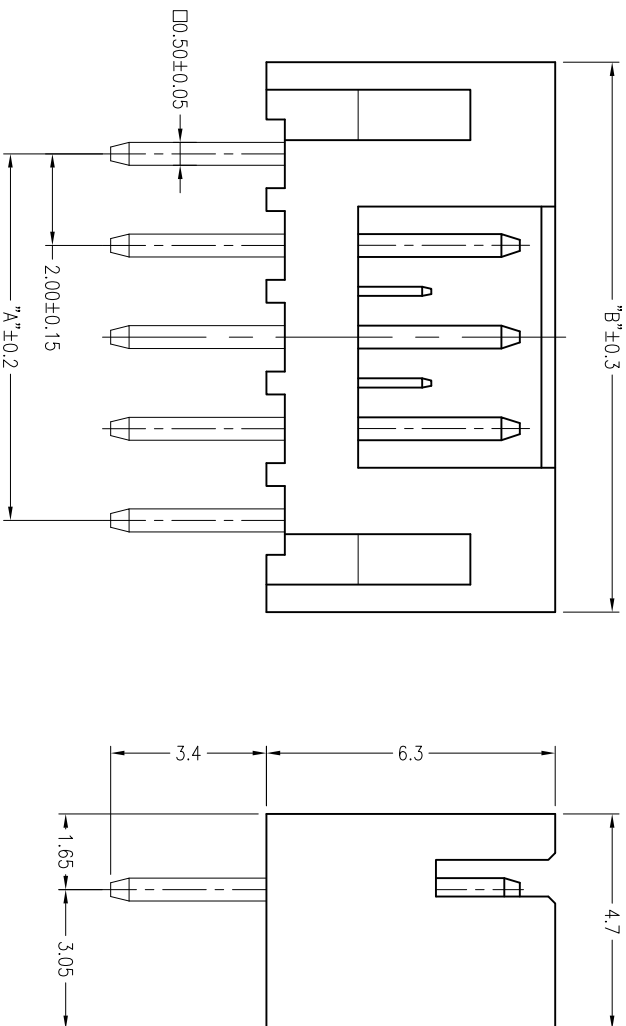
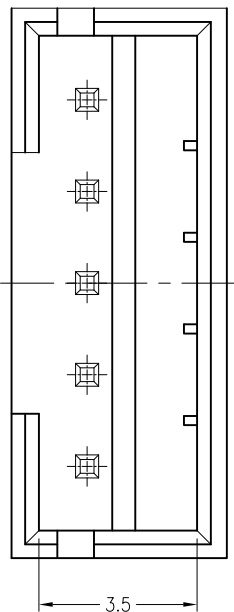


Poles	DIM.A	DIM.B
2P	2.0	6.1
3P	4.0	8.1
4P	6.0	10.1
5P	8.0	12.1
6P	10.0	14.1
7P	12.0	16.1
8P	14.0	18.1
9P	16.0	20.1
10P	18.0	22.1
11P	20.0	24.1
12P	22.0	26.1
13P	24.0	28.1
14P	26.0	30.1
15P	28.0	32.1
16P	30.0	34.1

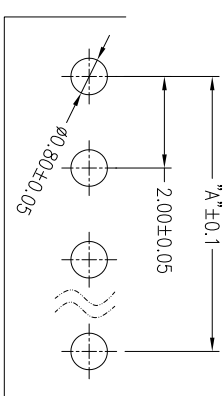


■ 技术参数 SPECIFICATIONS

- ◆ 适用线规: AWG#30~#24
- ◆ Applicable Wire: AWG#30~#24
- ◆ 额定电压: 100V DC,AC(rms)
- ◆ Rated voltage: 100V DC,AC(rms)
- ◆ 额定电流: 2A (AWG #24)
- ◆ Rated Current: 2A (AWG #24)
- ◆ 耐压值: 800V AC/minute
- ◆ Withstand voltage: 800V AC/min.
- ◆ 工作温度: -25°C ~ +85°C
- ◆ Working Temp : -25°C ~ +85°C
- ◆ 绝缘电阻: $\geq 1000 \text{ M}\Omega$
- ◆ Insulation resistance: $\geq 1000 \text{ M}\Omega$
- ◆ 接触电阻: $\leq 10 \text{ m}\Omega$
- ◆ Contact resistance: $\leq 10 \text{ m}\Omega$

■ 材料 MATERIAL

- ◆ 绝缘体: PA66, UL94-V2
- ◆ Insulator: Nylon66, UL94-V2
- ◆ 接触针: 黄铜
- ◆ Contact PIN: Brass



P.C.B LAYOUT



GENERAL TOLERANCE

XX: ±0.40
X: ±0.30
.X: ±0.25
.XX: ±0.15

SCALE: 6:1
UNIT: mm
SIZE: A4

DRAWN: 钟红
CHECK: 于腾
APPROVE: 肖志军

DATE: 2017. 10. 09
DATE: 2017. 10. 09
DATE: 2017. 10. 09

DOC. NO: E:\DWG\Production\PH
PARTS NO: PH-NA

TITLE: 工程图

REV. A
SHEET: 1/1