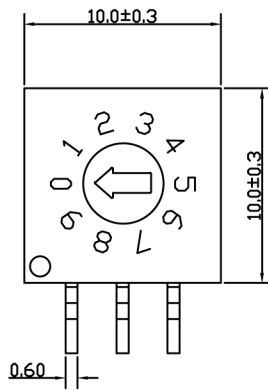
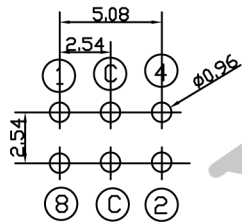


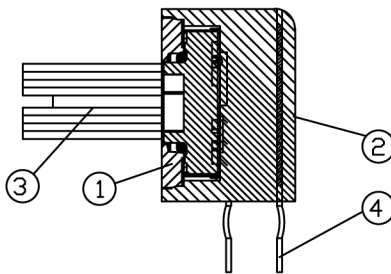
### 10 Position



### CIRCUIT DIAGRAM

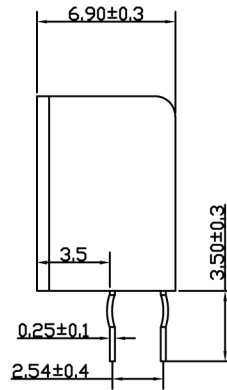


### CONSTRUCTION

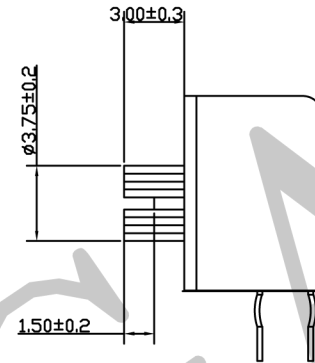


ITEM	DES	MATERIALS	TREATMENT
1	COVER	ENGINEERING PLASTICS	BLACK
2	BASE	ENGINEERING PLASTICS	BLACK
3	KEY	ENGINEERING PLASTICS	WHITE
4	TERMINAL	ALLOY COPPER	GOLD

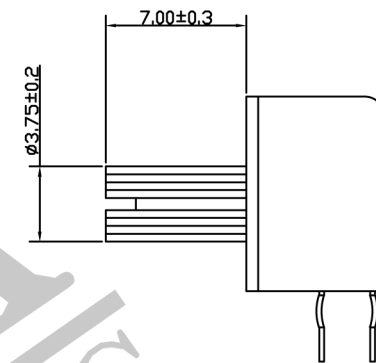
### Recessed Actuator



### 3.0mm Actuator



### High Actuator



### CODE:

R	0	1	2	3	4	5	6	7	8	9	A	B	C	D	E	F
C	●	●	●	●	●	●	●	●	●	●	●	●	●	●	●	●
1		●		●		●		●		●		●		●		●
2			●	●			●	●			●	●			●	●
4					●	●	●	●					●	●	●	●
8									●	●	●	●	●	●	●	●

### PRODUCT NAMING:

