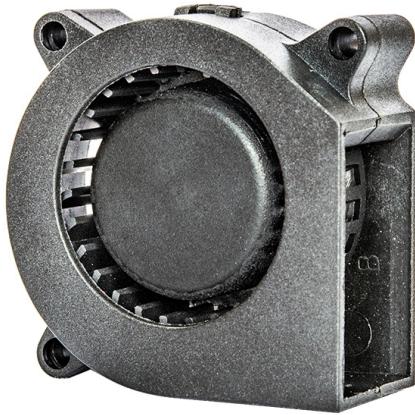


# DB

# 4020-TK

40x40x20mm(1.57"x1.57"x0.78") **CE**



HOUSING Thermoplastic PBT, UL94V-0  
 IMPELLER Thermoplastic PBT, UL94V-0  
 BEARING Ball or sleeve  
 OPERATING TEMPERATURE -10°C to +70°  
 DIELECTRIC STRENGTH 5mA Max. at 500 VAC for 1 minute  
 INSULATION RESISTANCE 10M Ω min. @500 VDC  
 WEIGHT 29 g  
 ROHS COMPLIANCE Yes  
 IP LEVEL IP21 (Special IP Rating On Request)

# 40 mm

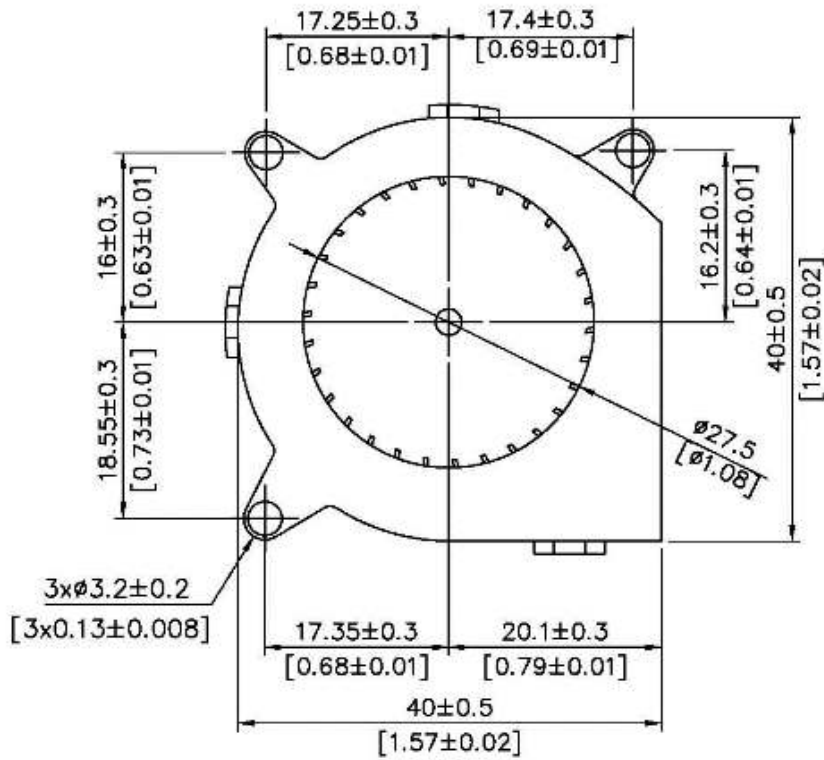
## SPECIFICATION

MODEL NO.	RATED VOLTAGE(V)	RATED CURRENT(A)	INPUT POWER(W)	SPEED (RPM)	MAX. AIR PRESSURE		MAX. AIR FLOW		NOISE dB(A) @1M
					inchH2O	mmH2O	CFM	m3/min	
DB4020V24M-TK	24	0.05	1.20	5500	0.165	4.18	2.56	0.072	33.5
DB4020V24L-TK	24	0.04	0.96	5000	0.132	3.35	2.27	0.064	30.2
DB4020V24XL-TK	24	0.03	0.72	4500	0.104	2.64	2.00	0.057	27.4
DB4020V24H-TK	24	0.06	1.44	6000	0.206	5.22	2.75	0.078	35.7
DB4020V24SL-TK	24	0.07	1.68	6500	0.258	6.55	3.06	0.087	37.4
DB4020V24SM-TK	24	0.08	1.92	7500	0.359	9.13	3.54	0.100	40.9
DB4020V24SH-TK	24	0.09	2.16	8500	0.479	12.16	4.00	0.113	44.5
DB4020V12XL-TK	12	0.06	0.72	4500	0.104	2.64	2.00	0.057	27.4
DB4020V12L-TK	12	0.07	0.84	5000	0.132	3.35	2.27	0.064	30.2
DB4020V12M-TK	12	0.10	1.20	5500	0.165	4.18	2.56	0.072	33.5
DB4020V12H-TK	12	0.12	1.44	6000	0.206	5.22	2.75	0.078	35.7
DB4020V12SL-TK	12	0.14	1.68	6500	0.258	6.55	3.06	0.087	37.4
DB4020V12SM-TK	12	0.16	1.92	7500	0.359	9.13	3.54	0.100	40.9
DB4020V12SH-TK	12	0.18	2.16	8500	0.479	12.16	4.00	0.113	44.5
DB4020V5XL-TK	5	0.14	0.70	4500	0.104	2.64	2.00	0.057	27.4
DB4020V5L-TK	5	0.16	0.80	5000	0.132	3.35	2.27	0.064	30.2
DB4020V5M-TK	5	0.24	1.20	5500	0.165	4.18	2.56	0.072	33.5
DB4020V5H-TK	5	0.29	1.45	6000	0.206	5.22	2.75	0.078	35.7
DB4020V5SL-TK	5	0.34	1.70	6500	0.258	6.55	3.06	0.087	37.4
DB4020V5SM-TK	5	0.38	1.90	7500	0.359	9.13	3.54	0.100	40.9

**SYMBANG**

## DIMENSION

AIR FLOW



UNIT: mm[inch]

## AIR PERFORMANCE

