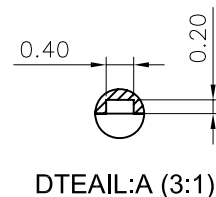


P.C.B LAYOUT

A TYPE



REVISION DATA

REV	DESCRIPTION	DATE
A0	NEW DRAWING	2018-08-17

Technical Data

Material:

Pin(outer sleeve): Brass,machined CuZn38Pb2

Clip(contact 4 finger): Beryllium copper,heat treated

Plating(outer sleeve):

Tin plated:2μm/80μ"Ni, 5μm/200μ"Sn

Gold Plated:2μm/80μ"nickelfull gold

Plating(contact): 2μm/80μ"nickel, gold or Tin plated

Insulator black(housing): PPS (UL94V-0)

Electrical:

Current rating: 3Amps/contact max.

Contact resistance: ≤4mΩ/contact

Insulation resistance: ≥1000MΩ at V=100V

Operaing voltage: 60VAC/DC

Mechanical:

Average insertion force with steel pin of
Ø0.43mm/0.17": <250g

Average withdrawal force with steel pin of
Ø0.43mm/0.17": >90g min.

Mechanical life cycle:min.200

Operaing temperatures: Gold Plated:-55°C to+105°C

Tin plated:-40°C to+105°C

Soldering temperature: +260°C,10s max

CONN THERM

TOLERANCE	PROJECTON		TITLE:
ANGLE ±5°	DATE :	2018-08-17	2.54mmPitch SIP Sockets Single Row SMT Pin Length 7.43mm
X.XXX ±0.10	DRAWN :	TIAN	
X.XX ±0.20	CHECKED :		
X.X ±0.30	APPROVED :		
X. ±0.50			REV: A0 UNIT: mm SCALE: 1:1 SIZE: A4