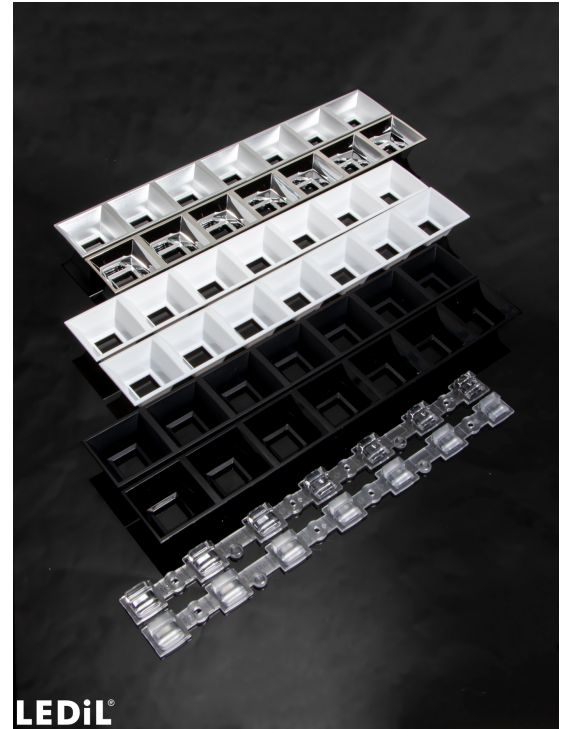


DAISY-7X1-ZT25-D

Asymmetric beam for aisle lighting. Diffused version for perfect colour mixing.

SPECIFICATION:

Dimensions	279.5 x 39.6 mm
Height	20.3 mm
Fastening	pin, screw
ROHS compliant	yes ⓘ



MATERIALS:

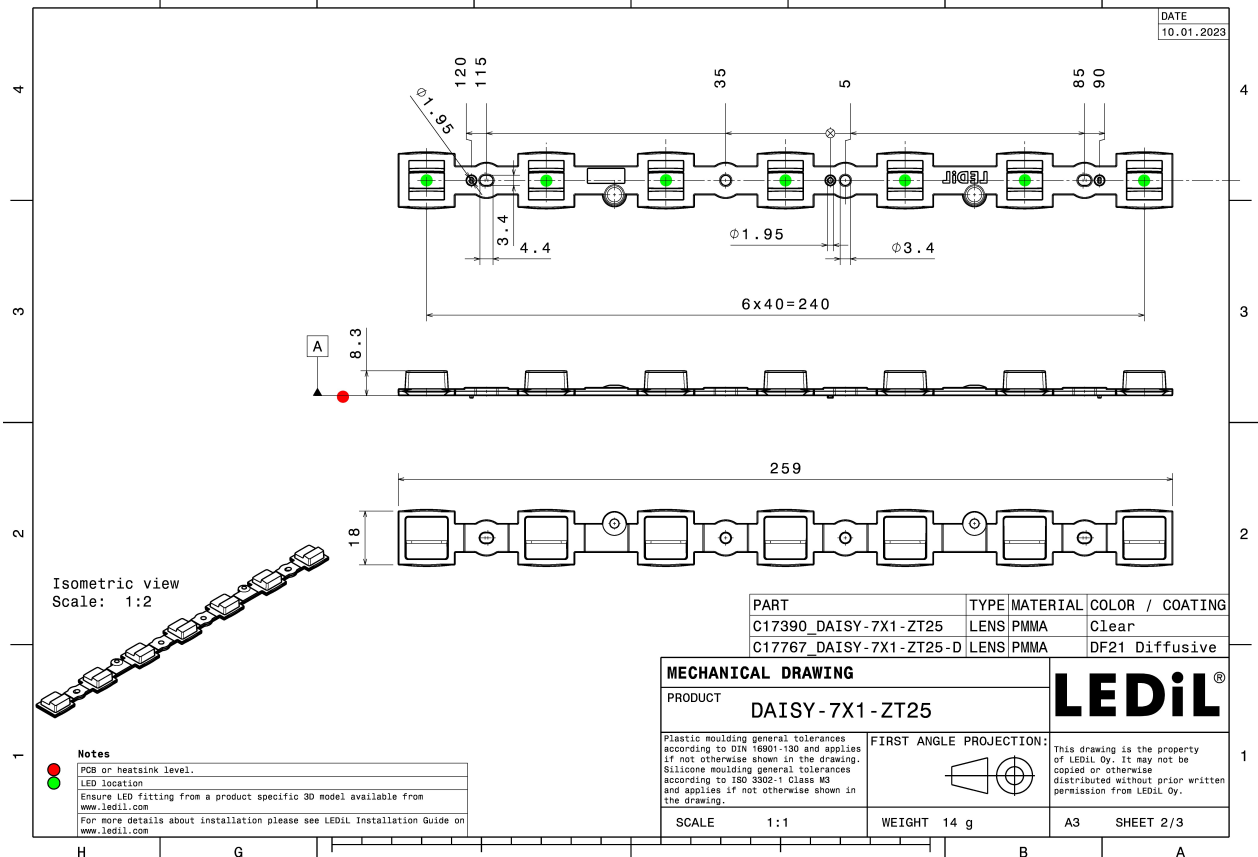
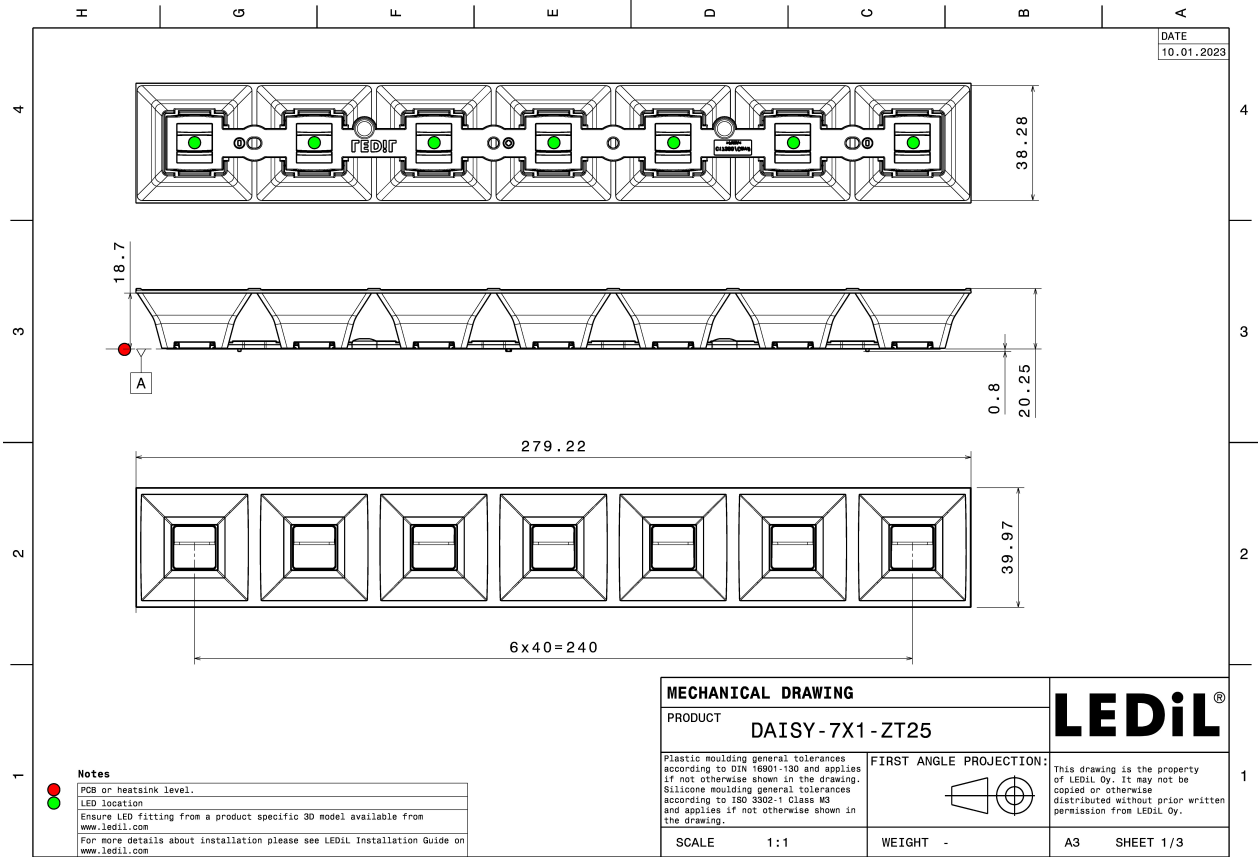
Component	Type	Material	Colour	Finish
C17767_DAISY-7X1-ZT25-D	Linear lens	PMMA	milky	
C18409_DAISY-7X1-SHD-MET-MATT	Shade	PC	metal	matt
C18167_DAISY-7X1-SHD-MET	Shade	PC	metal	gloss
C17225_DAISY-7X1-SHD-WHT-MATT	Shade	PC	white	matt
C17051_DAISY-7X1-SHD-MATT	Shade	PC	black	matt
C16876_DAISY-7X1-SHD-WHT	Shade	PC	white	gloss
C16872_DAISY-7X1-SHD	Shade	PC	black	gloss

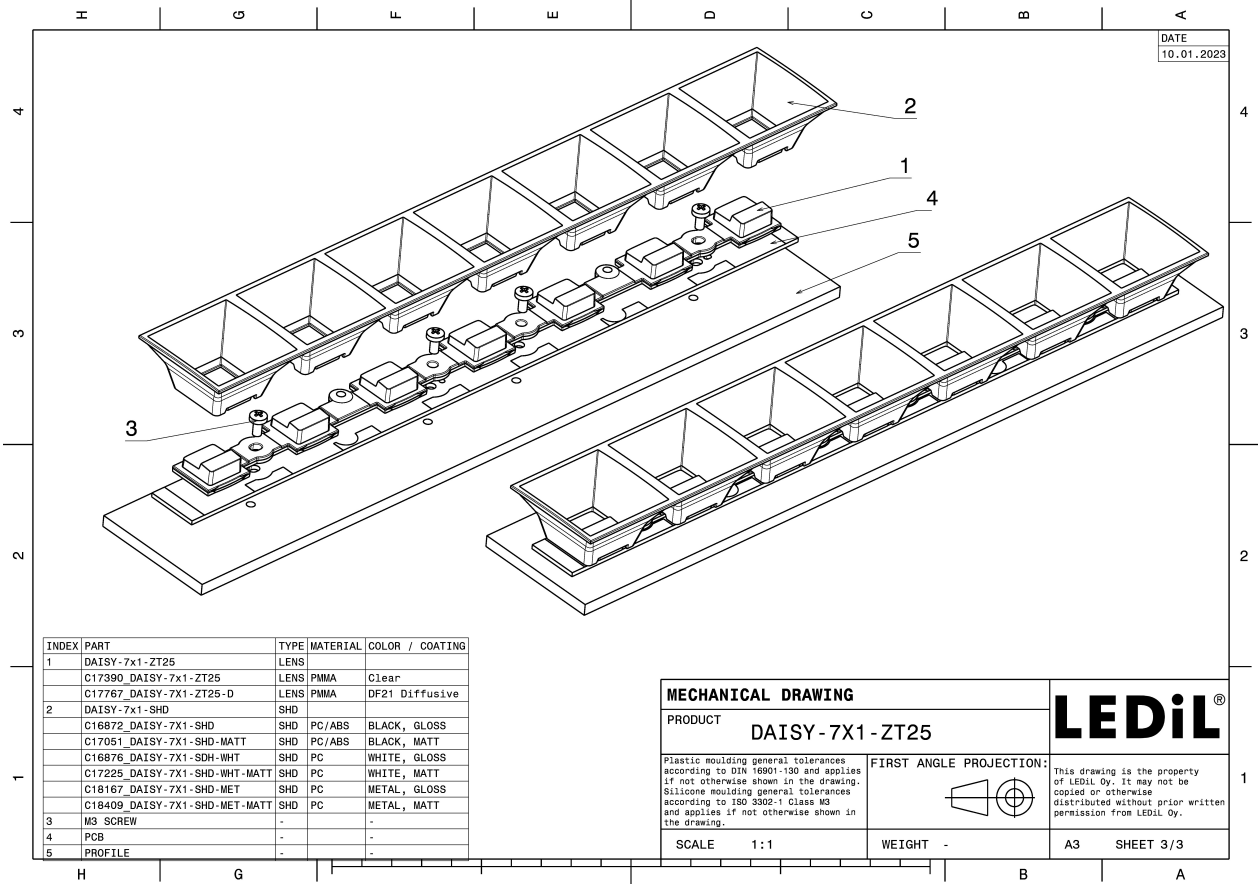
ORDERING INFORMATION:

Quantities for one set:

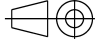
Linear lens	1
Shade	1

Component		Qty in box	MOQ	MPQ	Box weight (kg)
C17767_DAISY-7X1-ZT25-D	Linear lens	312	312	24	5.9
» Box size: 400 x 300 x 300 mm					
C18409_DAISY-7X1-SHD-MET-MATT	Shade	156	312	24	7.0
» Box size: 595 x 360 x 230 mm					
C17225_DAISY-7X1-SHD-WHT-MATT	Shade	156	312	24	7.6
» Box size: 595 x 360 x 230 mm					
C16872_DAISY-7X1-SHD	Shade	156	312	24	7.1
» Box size: 595 x 360 x 230 mm					
C16876_DAISY-7X1-SHD-WHT	Shade	156	312	24	7.6
» Box size: 595 x 360 x 230 mm					
C18167_DAISY-7X1-SHD-MET	Shade	156	312	24	7.0
» Box size: 595 x 360 x 230 mm					
C17051_DAISY-7X1-SHD-MATT	Shade	156	312	24	7.3
» Box size: 595 x 360 x 230 mm					




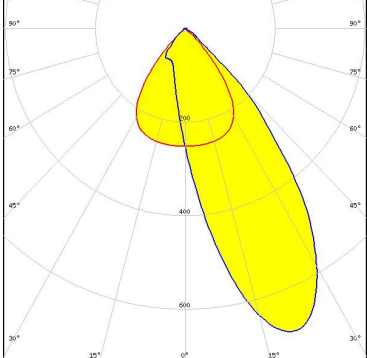

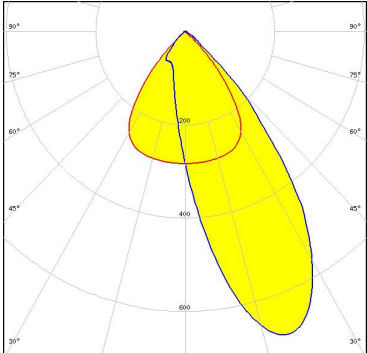

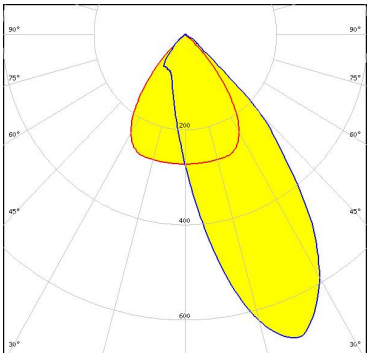

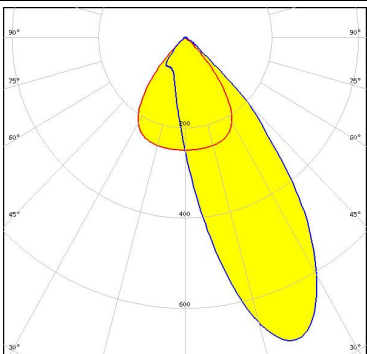


INDEX	PART	TYPE	MATERIAL	COLOR / COATING
1	DAISY-7x1-ZT25	LENS		
	C17390 DAISY-7x1-ZT25	LENS	PMMA	Clear
	C17767 DAISY-7x1-ZT25-D	LENS	PMMA	DF21 Diffusive
2	DAISY-7x1-SHD	SHD		
	C16872 DAISY-7X1-SHD	SHD	PC/ABS	BLACK, GLOSS
	C17051 DAISY-7X1-SHD-MATT	SHD	PC/ABS	BLACK, MATT
	C16876 DAISY-7X1-SHD-WHT	SHD	PC	WHITE, GLOSS
	C17225 DAISY-7X1-SHD-WHT-MATT	SHD	PC	WHITE, MATT
	C18167 DAISY-7X1-SHD-MET	SHD	PC	METAL, GLOSS
	C18409 DAISY-7X1-SHD-MET-MATT	SHD	PC	METAL, MATT
3	M3 SCREW	-	-	-
4	PCB	-	-	-
5	PROFILE	-	-	-

MECHANICAL DRAWING		LEDiL [®]
PRODUCT DAISY-7X1-ZT25		
Plastic moulding general tolerances according to DIN 16801-130 and applies if not otherwise shown in the drawing. Silicone moulding general tolerances according to ISO 3302-1 Class M3 and applies if not otherwise shown in the drawing.	FIRST ANGLE PROJECTION: 	This drawing is the property of LEDiL Oy. It may not be copied or otherwise distributed without prior written permission from LEDiL Oy.
SCALE 1:1	WEIGHT -	A3 SHEET 3/3

See also our general installation guide: www.ledil.com/installation_guide

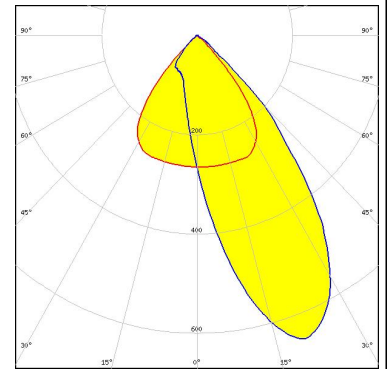
OPTICAL RESULTS (MEASURED):

 <p>LED LED Line SMD L28W2 TW Module 20mm 2800Lm Daisy 7x1 (E21A) FWHM / FWTM Asymmetric Efficiency 61 % Peak intensity 0.7 cd/lm LEDs/each optic 2 Light colour Tunable White Required components: C17051_DAISSY-7X1-SHD-MATT</p>	
 <p>LED LED Line SMD L28W2 White Module 20mm 2800Lm Daisy 7x1 (E21A) FWHM / FWTM Asymmetric Efficiency 62 % Peak intensity 0.7 cd/lm LEDs/each optic 2 Light colour White Required components: C17051_DAISSY-7X1-SHD-MATT</p>	
 <p>LED LUXEON 2835 Line FWHM / FWTM Asymmetric Efficiency 63 % Peak intensity 0.7 cd/lm LEDs/each optic 1 Light colour White Required components: C16872_DAISSY-7X1-SHD</p>	
 <p>LED LUXEON HL2Z FWHM / FWTM Asymmetric Efficiency 62 % Peak intensity 0.8 cd/lm LEDs/each optic 2 Light colour White Required components: C17051_DAISSY-7X1-SHD-MATT</p>	

OPTICAL RESULTS (MEASURED):

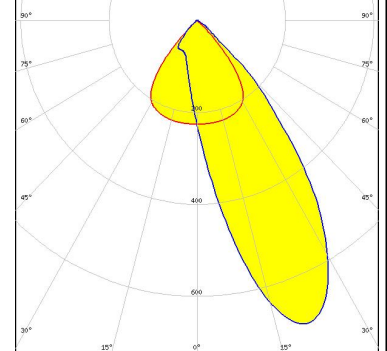
MST Your solutions

LED LinLED 280x28mm 1600lm 840 4C 21V DAISY 7x1(ZT25)
 FWHM / FWTM Asymmetric
 Efficiency 62 %
 Peak intensity 0.7 cd/lm
 LEDs/each optic 1
 Light colour White
 Required components:
 C16872_DAISSY-7X1-SHD



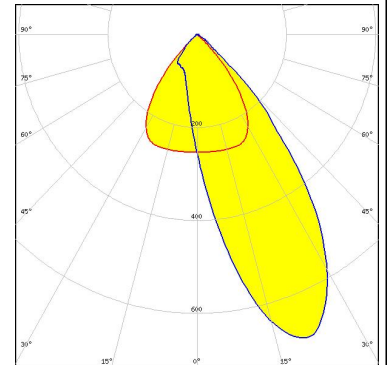
NICHIA

LED NCSxE17A
 FWHM / FWTM Asymmetric
 Efficiency 61 %
 Peak intensity 0.7 cd/lm
 LEDs/each optic 1
 Light colour White
 Required components:
 C17051_DAISSY-7X1-SHD-MATT



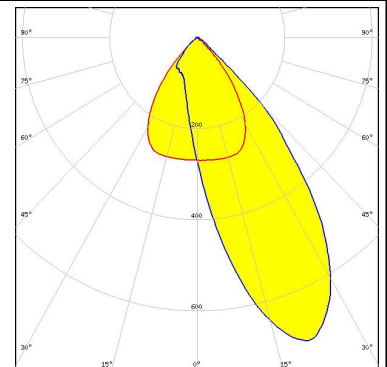
NICHIA

LED NVSxE21A
 FWHM / FWTM Asymmetric
 Efficiency 62 %
 Peak intensity 0.8 cd/lm
 LEDs/each optic 1
 Light colour White
 Required components:
 C16872_DAISSY-7X1-SHD



SAMSUNG

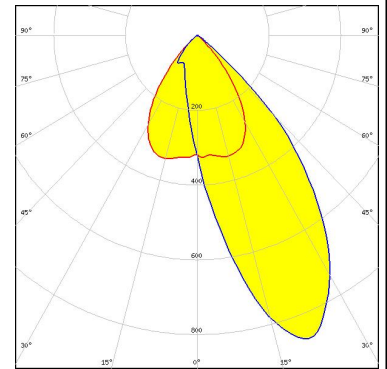
LED LH231B
 FWHM / FWTM Asymmetric
 Efficiency 63 %
 Peak intensity 0.8 cd/lm
 LEDs/each optic 1
 Light colour White
 Required components:
 C16872_DAISSY-7X1-SHD



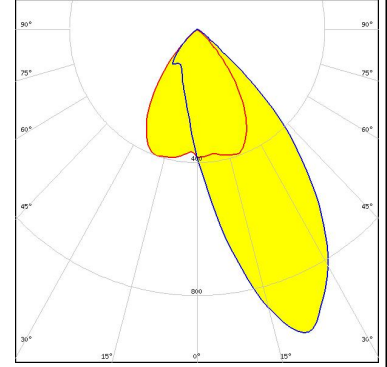
OPTICAL RESULTS (SIMULATED):



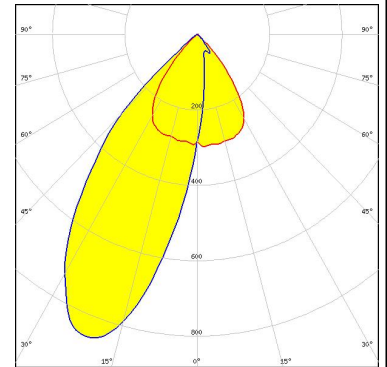
LED J Series 2835
 FWHM / FWTM Asymmetric
 Efficiency 73 %
 Peak intensity 0.9 cd/lm
 LEDs/each optic 2
 Light colour White
 Required components:
 C16872_DAISSY-7X1-SHD



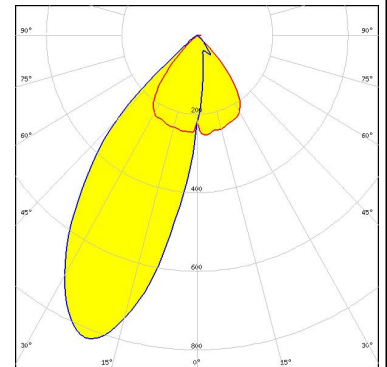
LED J Series 2835
 FWHM / FWTM Asymmetric
 Efficiency 84 %
 Peak intensity 1 cd/lm
 LEDs/each optic 2
 Light colour White
 Required components:
 C16876_DAISSY-7X1-SHD-WHT



LED LUXEON 2835 Line
 FWHM / FWTM Asymmetric
 Efficiency 70 %
 Peak intensity 0.9 cd/lm
 LEDs/each optic 2
 Light colour White
 Required components:
 C16872_DAISSY-7X1-SHD



LED NVSxE21A
 FWHM / FWTM Asymmetric
 Efficiency 68 %
 Peak intensity 0.8 cd/lm
 LEDs/each optic 2
 Light colour White
 Required components:
 C16872_DAISSY-7X1-SHD

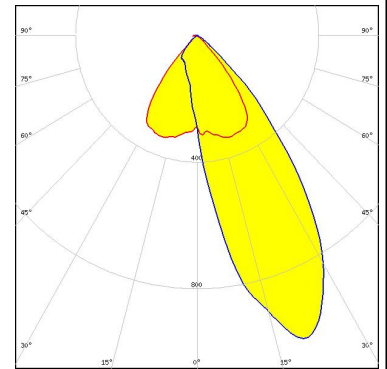


OPTICAL RESULTS (SIMULATED):

OSRAM

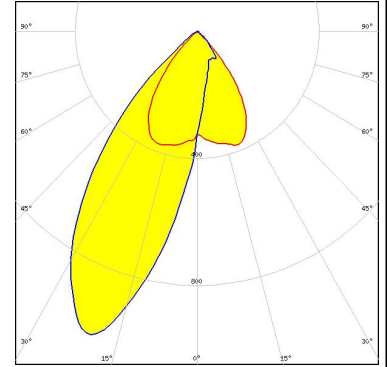
Opto Semiconductors

LED OSLON PURE 1010
 FWHM / FWTM Asymmetric
 Efficiency 86 %
 Peak intensity 1.1 cd/lm
 LEDs/each optic 4
 Light colour White
 Required components:
 C17225_DAISY-7X1-SHD-WHT-MATT



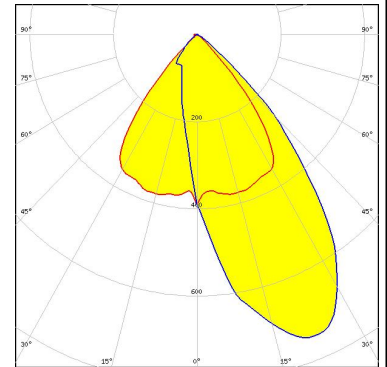
SAMSUNG

LED LH181B
 FWHM / FWTM Asymmetric
 Efficiency 87 %
 Peak intensity 1.1 cd/lm
 LEDs/each optic 2
 Light colour White
 Required components:
 C18167_DAISY-7X1-SHD-MET



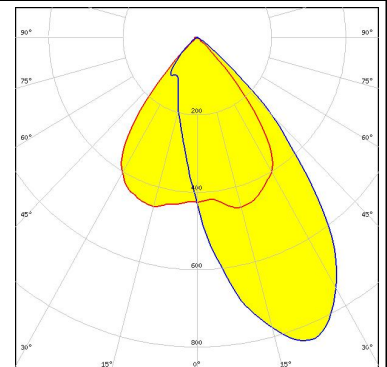
SAMSUNG

LED LM101B
 FWHM / FWTM Asymmetric
 Efficiency 75 %
 Peak intensity 0.8 cd/lm
 LEDs/each optic 4
 Light colour White
 Required components:
 C17051_DAISY-7X1-SHD-MATT



SAMSUNG

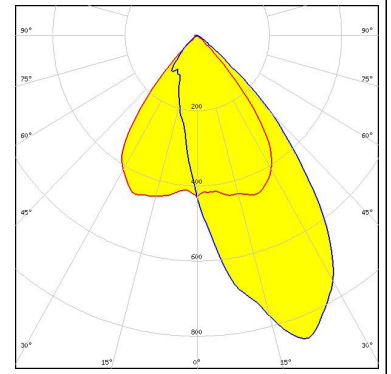
LED LM101B
 FWHM / FWTM Asymmetric
 Efficiency 86 %
 Peak intensity 0.9 cd/lm
 LEDs/each optic 4
 Light colour White
 Required components:
 C17225_DAISY-7X1-SHD-WHT-MATT



OPTICAL RESULTS (SIMULATED):

SAMSUNG

LED	LM101B
FWHM / FWTM	Asymmetric
Efficiency	88 %
Peak intensity	1 cd/lm
LEDs/each optic	4
Light colour	White
Required components:	
	C17532_DAISY-7X1-SHD-MET



GENERAL INFORMATION:

NOTE: The typical beam angle will be changed by different color, chip size and chip position tolerance. The typical total beam angle is the full angle measured where the luminous intensity is half of the peak value.

MATERIALS:

As part of our continuous research and improvement processes, and to ensure the best possible quality and availability of our products, LEDiL reserves the right to change material grades without notice.

PRODUCT DATA USER AGREEMENT AND DISCLAIMER:

The measured data in the provided downloadable LEDiL Product Datasheets and Mechanical 2D-Drawings is rounded and provided as reference for planning. LEDiL Oy's optical specifications have been verified by conducting performance testing of the products in accordance with the company's quality system. The reported data are averaged results of multiple measurements with typical variation. LEDiL Oy reserves the right to without prior notification make changes and improvements to its products.

LEDiL Oy assumes neither warranty, nor guarantee nor any other liability of any kind for the contents and correctness of the provided data. The provided data has been generated with highest diligence but the provided data may in reality not represent the complete possible variation range of all intrinsic parameters. Therefore, in certain cases a deviation from the provided data could occur.

LEDiL Oy reserves the right to undertake technical changes of its products without further notification which could lead to changes in the provided data. LEDiL Oy assumes no liability of any kind for the possible deviation from any provided data or any other damage resulting from the usage of the provided data.

The user agrees to this disclaimer and user agreement with the download or usage of the provided files.

LEDiL Oy

Joensuunkatu 13
FI-24240 SALO
Finland

LEDiL Inc.

228 West Page Street
Suite D
Sycamore IL 60178
USA

Ledil Optics Technology (Shenzhen) Co., Ltd.

405 , Block B
Casic Motor Building
Shenzhen 518057
P.R.CHINA

Local sales and technical support

[www.ledil.com/
where_to_buy](http://www.ledil.com/where_to_buy)

Shipping locations

Salo, Finland
Hong Kong, China

Distribution Partners

[www.ledil.com/
where_to_buy](http://www.ledil.com/where_to_buy)