

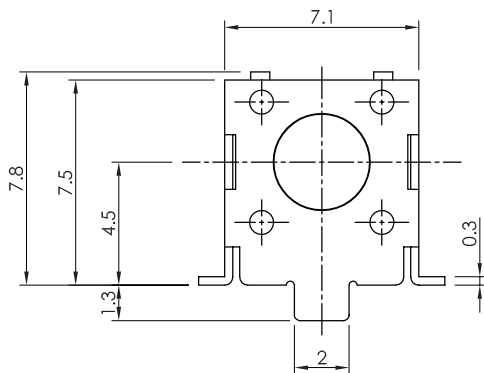
CONN THERM

Switch

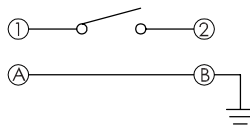
Tactile switch SMD

Specification:

Rating: DC 12V 50mA
Travel: 0.25 ± 0.1 mm
Bounce time: ≤ 5 ms
Contact Resistance: ≤ 100 m Ω
Insulation resistance: ≥ 100 M Ω at 250V DC
Withstand voltage: 250V AC for 1 minute
Operating temperature range: $-20^{\circ}\text{C} \sim 70^{\circ}\text{C}$
Ambient humidity used: $< 85\%$ RH
Operating force: 160 ± 50 gf



CIRCUIT DIAGRAM



SMD REFLOW PATTERN

