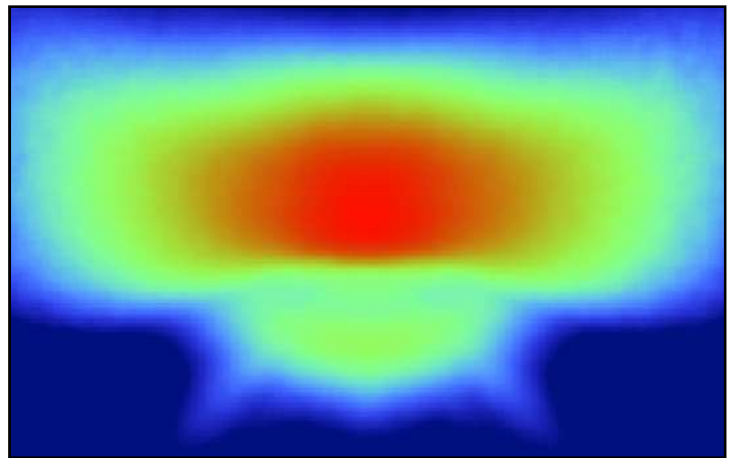
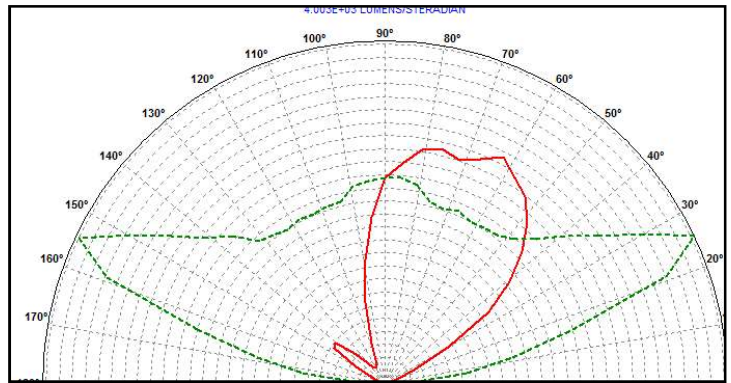


## PLL120424 - IESNA Type III



- Material = PMMA Clear, Non-yellowing, 10-year guarantee\*\*
- Full angle at 50% from maximum: ~ 150°x68°
- Full angle at 10% from maximum: ~ 165°x130°
- The light spots here represented refer to tests carried out with LEDs with 3mm DOM and 2mm<sup>2</sup> LES, ~260lm@LED

**Note:**

- Dimensions in inches into brackets
- For missing dimensions see 3D file
- WHITE surfaces: mirror polished
- GREY surfaces: embossed 25/27 VDI
- RED surface: gate area. Sink mark injection will be present
- Ⓢ = Quality Control Dimensions (QCD)
- Planarity tolerance +/- 0.80 mm

**12 Array lens**

DESCRIPTION: 12 Array lens  
 CODE: PLL 120424  
 KHATOD  
 Via Alessandro, 25  
 Cesena (FC) 48018  
 TEL: +39 0541 70111  
 WWW.KHATOD.COM

REVISION: LS  
 DATE: 03/11/2016  
 DRAWN: P. S. M.  
 CHECKED: M. S. M.  
 SCALE: 1:1  
 SHEET: 1 of 1