

## LINNEA-O

~35° + 70° oval beam optimized for 1.0 mm metal sheet or profile

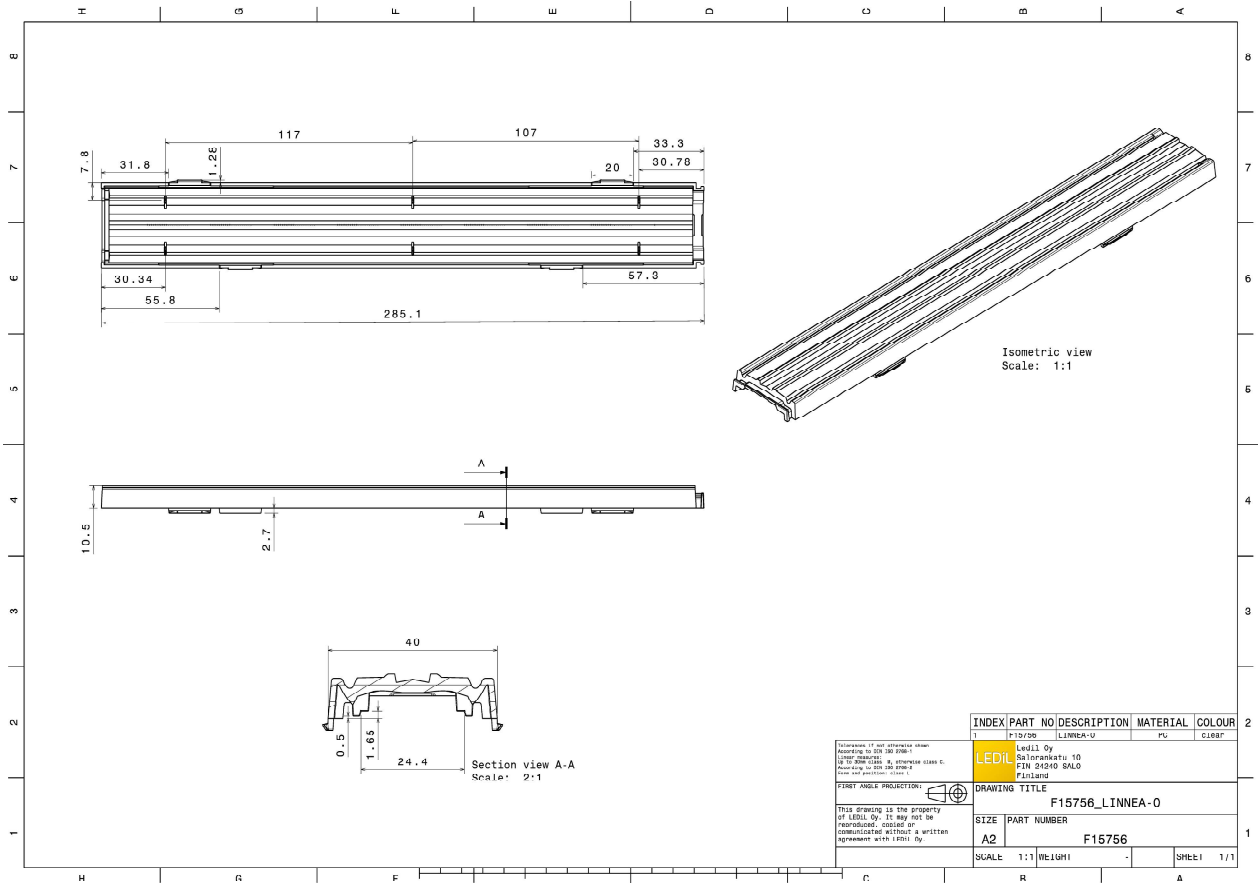
### TECHNICAL SPECIFICATIONS:

Dimensions	285.0 x 40.0 mm
Height	10.5 mm
Fastening	pin
Colour	clear
Box size	578 x 378 x 295 mm
Box weight	7.3 kg
Quantity in Box	180 pcs
ROHS compliant	yes ⓘ



### MATERIAL SPECIFICATIONS:

Component	Type	Material	Colour
LINNEA-O	Linear lens	PC	clear



INDEX	PART NO	DESCRIPTION	MATERIAL	COLOUR
1	F15756	LINNEA-O	PC	CLEAR

Dimension of not otherwise stated according to DIN ISO 286-1  
 UNITS: DIMENSIONS in millimetres unless stated  
 Accuracy to DIN ISO 286-1  
 Hole and position: class 7

FIRST ANGLE PROJECTION

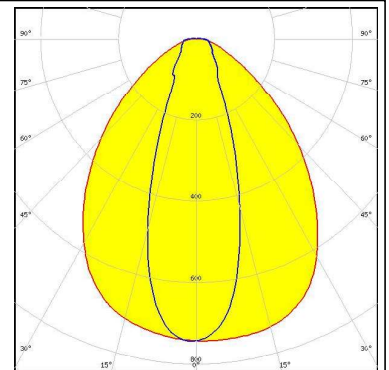
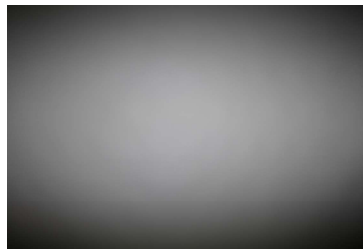
This drawing is the property of LEDiL Oy. It may not be reproduced, copied or communicated without a written agreement with LEDiL Oy.

DRAWING TITLE	
F15756_LINNEA-O	
SIZE	PART NUMBER
A2	F15756
SCALE: 1:1	WT: 1811
SHEET	1/1

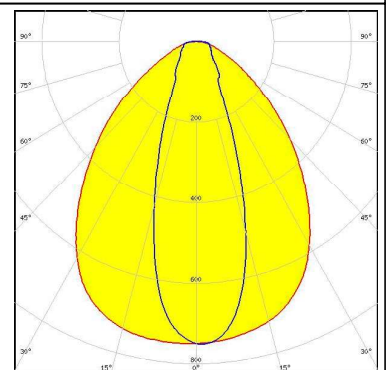
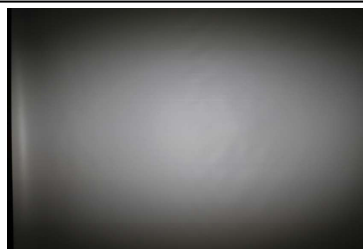
#### PHOTOMETRIC DATA (MEASURED):



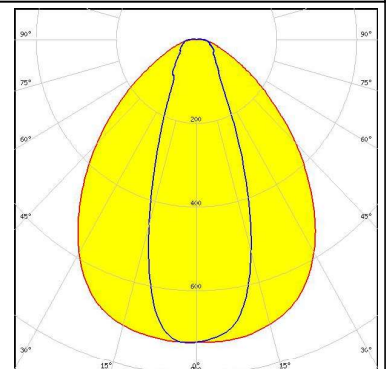
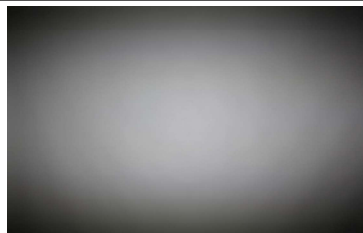
LED CALOSNU405-M7W1  
 FWHM 88.0 + 35.0°  
 Efficiency 82 %  
 Peak intensity 0.750 cd/lm  
 LEDs/each optic 1  
 Light colour White  
 Required components:



LED CALOSNU410-M7W1  
 FWHM 88.0 + 35.0°  
 Efficiency 82 %  
 Peak intensity 0.750 cd/lm  
 LEDs/each optic 1  
 Light colour White  
 Required components:



LED Tridino 1ft 1100lm xxxHE 1R HV  
 FWHM 89.0 + 38.0°  
 Efficiency 84 %  
 Peak intensity 0.730 cd/lm  
 LEDs/each optic 1  
 Light colour White  
 Required components:



LED XP-E  
 FWHM 90.0 + 35.0°  
 Efficiency 81 %  
 Peak intensity 0.720 cd/lm  
 LEDs/each optic 1  
 Light colour White  
 Required components:

