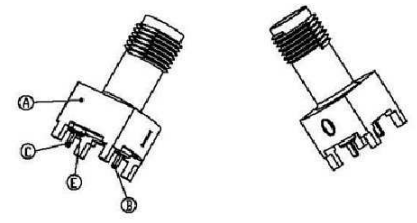
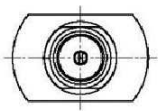
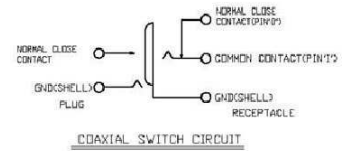
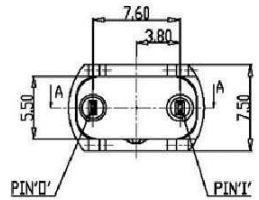
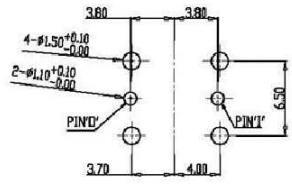
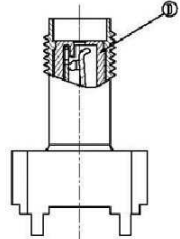
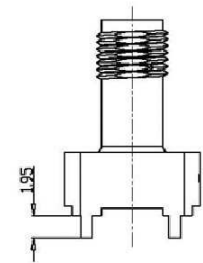
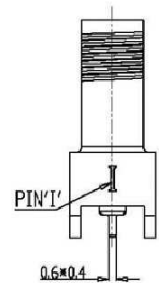
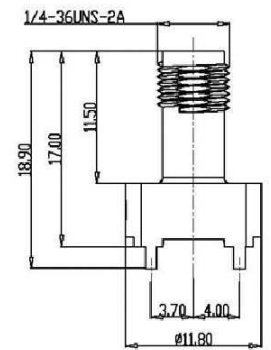
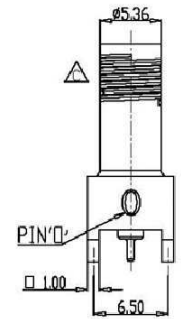


Rev.	Number	Description	Date	Drawn	Checked	Approved
A						
B						
C						



NOTES:

- PRODUCT SPECIFICATION:
  - CHARACTER IMPEDANCE: 50Ω
  - LLCR:
    - INITIAL: 100 mΩ Max.
    - AFTER TEST: 200 mΩ Max.
  - INSULATION RESISTANCE: 5000 MΩ Min.
  - DIELECTRIC WITHSTANDING VOLTAGE: 1000V AC FOR 1 MINUTE, 60HZ
  - VSWR: (FREQUENCY)
    - <DC~3GHz> NORMAL CLOSE 1.50 Max.
    - NORMAL OPEN 1.50 Max.
  - INSERTION LOSS: (FREQUENCY)
    - <DC~3GHz> NORMAL CLOSE 0.5dB Max.
    - NORMAL OPEN 0.6dB Max.
  - ISOLATION: (FREQUENCY)
    - <DC~3GHz> 10.0dB Min.
  - DURABILITY: 500 Cycles
  - SALT SPRAY: 48 H
- ENVIRONMENTAL:
  - OPERATION TEMPERATURE: -55°C~+155°C
- PRODUCT COMPLIANT TO ROHS AND HALOGEN FREE.



No.	Part Name	Material	Finish	Q'ty
E	COVER HOUSING	LCP	Natural,UL 94V-0	1
D	HOUSING	LCP	Natural,UL 94V-0	1
C	NORMAL CLOSE CONTACT	C2680	Ni:100u"Min,Au:15u"Min,Sn:80u"Min	1
B	COMMON CONTACT	C6210	Ni:100u"Min,Au:15u"Min,Sn:80u"Min	1
A	SHELL	合金金	Matte Sn, 150u"Min	1

GENERAL TOLERANCE		SCALE:	DRAWN	DATE	DWG. NO.	TITLE	REV.		
XX. ±0.50		1:1	CHECK	DATE	PARTS NO.(INTENDED USE)			CUSTOMER DRAWING	C
X. ±0.35	X.* ±2.0°	UNIT:	APPROVE	DATE				SMA CONN. 立式母头,板上DIP型, 自带开关,H17mm	SHEET
.X ±0.25	.X* ±1.0°	MM						1/1	
.XX ±0.15	.XX* ±0.5°	SIZE: A4							