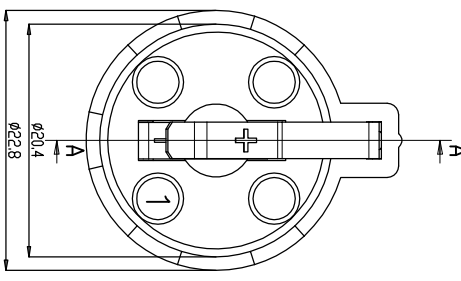
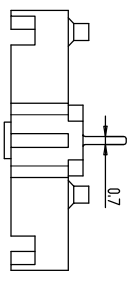
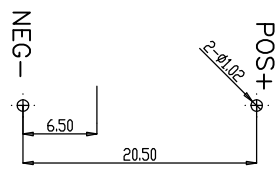
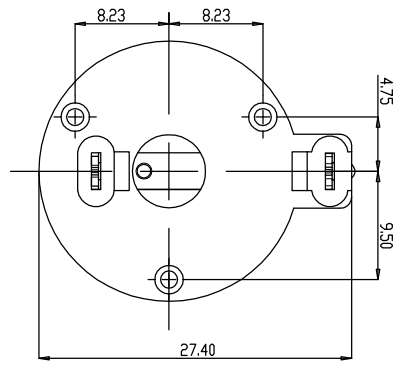


		* REVISIONS		
LTR	DESCRIPTION	DATE	REVISED	APPROVED
R1	+ Contact radian	2017.09.01	Huang	YC. H



剖面圖 A-A



P.C.Board Hole Pattern

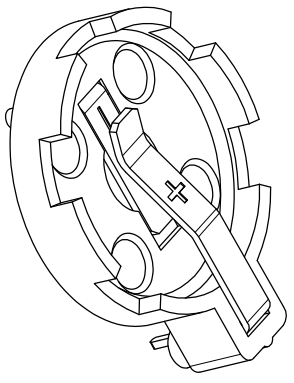
ELECTRICAL PERFORMANCE:

- 1.RATING:DC3V ,120mA.
- 2.INTER-CONTACT RESISTANCE:100m OHM MAX. AT BOTH THE POSITIVE AND NEGATIVE TERMINALS WHEN MEASURED BETWEEN THE TERMINALS OF THE CR2032 AT 1KHz WITH LOW DRAINAGE(100mA MAX)
- 3.INSULATION RESISTANCE:100M OHM MIN. WITH DC 500V APPLIED BETWEEN THE POSITIVE AND NEGATIVE TERMINALS.
- 4.VOLTAGE DURABILITY:NO DEGRADATION WITH DC 500V APPLIED FOR ONE MINUTE BETWEEN THE POSITIVE AND NEGATIVE TERMINALS.

MECHANICAL PERFORMANCE:

- 1.BATTERY INSERTION FORCE: 0.3KG-1.0KG FOR THE INITIAL CR2032 BATTERY INSERTION.
- 2.SPRING PRESSURE: 50G MIN. INITIAL CONTACT FORCE AT POSITIVE AND NEGATIVE TERMINALS.
- 3.TERMINAL STRENGTH: ELECTRICAL AND MECHANICAL PERFORMANCE SPECIFICATIONS SHOULD STILL BE SATISFIED, WITHOUT TERMINAL CRACKING OR EXCESSIVE PLAY, WITH A STATIC LOAD OF 1KG APPLIED TO THE TERMINALS IN ANY DIRECTION. HOWEVER, THE TERMINAL MAY BEND.

*** Unless other specified, the tolerance is ±0.2mm



P/N	PART NAME	Q'TY	MATERIAL	PLATING	REMARKS
1.	HOUSING	1	NYLON (PA66+GF)		UL94V-0
2.	POSITIVE CONTACT	1	Beryllium Copper	NICKEL PLATED	
3.	NEGATIVE CONTACT	1	Brass	NICKEL PLATED	
REVISION		APPROVAL BY	CHECKED BY	DRAWD BY	UNITS

2017.09.01
R1: +contact radian

Y.C.H	DY	Huang
PROJECTION	PRODUCT	DRAWING NO.
Battery holder for CR2032	BH-001-BECU	

Tolerances
X. ±0.5
.x ±0.2
.xx ±0.05



A&G POWER CO., LTD

SCALE 1:1